

SECLUDED HOLLYWOOD HILLS ESTATE

8070 Laurelmont Drive, Los Angeles, CA 90046



Distinctive Modern Mediterranean...

- Hidden from the street, at the end of a long private driveway
- Three large bedrooms
- Three bathrooms: one full, one 3/4, one 1/2
- 2,777 Sq Ft • Built in 1973; effective year built 1988
- 26,357 Sq Ft Lot (APN 5569-030-015 & 5569-030 -016)
- Custom gourmet kitchen bathed in natural light includes center island, marble counter tops and lots of cabinet space
- Ample use of wood and natural stone (travertine, marble, granite)
- Versatile open floor plan includes spacious living and dining rooms maximizing flexibility for your furniture & hanging art
- Bright living room with fireplace & access to backyard
- Large master bedroom with fireplace, walk-in closet & endless views from the balconies.
- Master ensuite bathroom with two vanities, separate spa tub & shower
- Small room off the master bedroom is suitable as an office, nursery, exercise or crafts room
- Spacious two car direct access garage with ample storage space
- Remarkable private backyard open to nature, lush foliage and more...

Offered at: \$2,550,000



Direct 310-544-9636

Cell 310-941-0126

E-mail: fostermj@cox.net

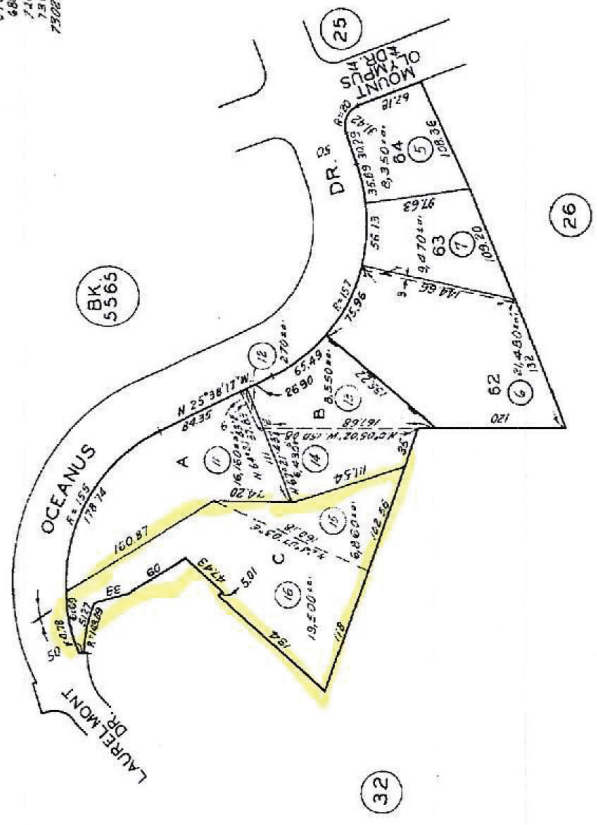
DRE#s: 01320054 & 01300216



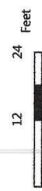
Michael
FOSTER & FOSTER
Nadia



670/13016
 480/14117
 750/245001
 750/245301



8070 LAURELMONT DR



Printed: 3/13/19

Disclaimer: This map represents a quick representation of spatial imagery or vector layers using GIS-NET. The map should be interpreted in accordance with the GIS-NET Public disclaimer statement. Printed with permission from the Los Angeles County Dept. of Regional Planning. All rights reserved.

