



# LURE

WESTMINSTER

---

MOVE TO  
WHAT MOVES  
YOU

---

# THE BEST OF EVERYTHING STARTS WITH A HOME

Introducing LURE in Westminster, one of the exquisite offerings from NRI Group. Discover modern designs brought together with quality and functionality in mind. A home to impress while dining and entertaining. Our homes are simply one of a kind.



# RESIDENCE 1A

**Approx. 1,650 Sq. Ft.**

3 Bedrooms

3 Baths

Patio Porch

Outdoor Deck

2-Car Garage

Master Suite

In-Suite Bath (Master)

Walk In Closet

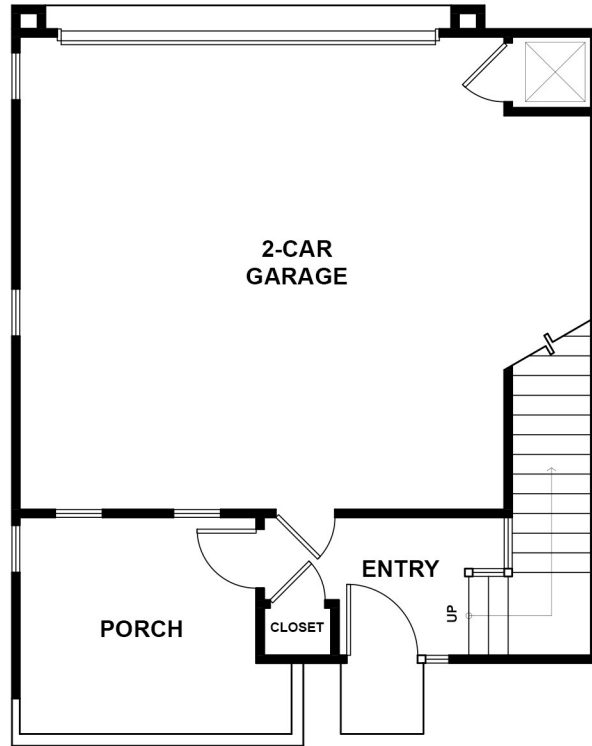


RESIDENCE

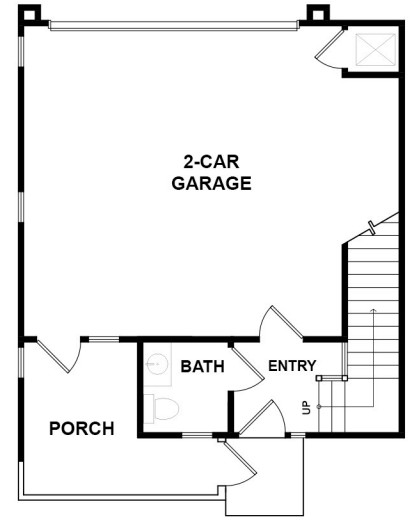
1A

Floor Plan

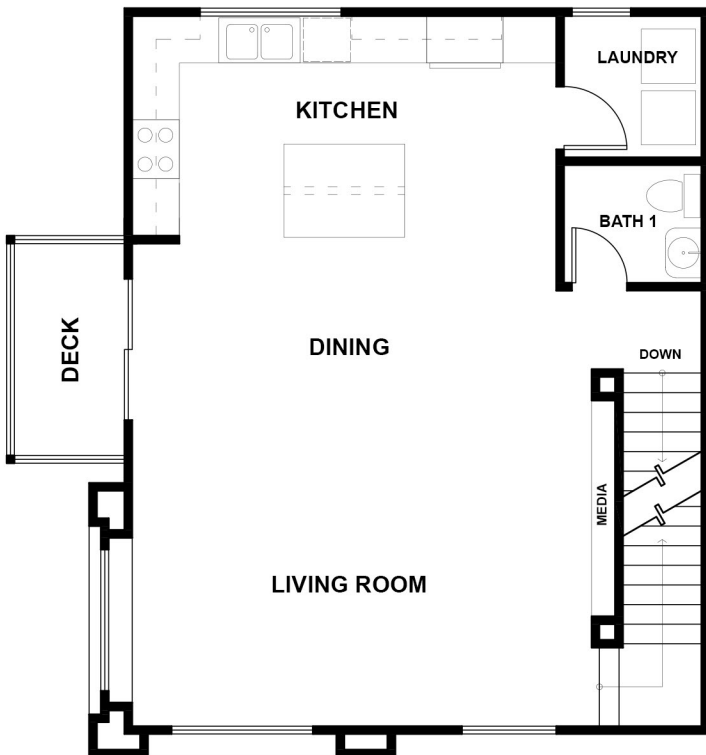
1st Floor



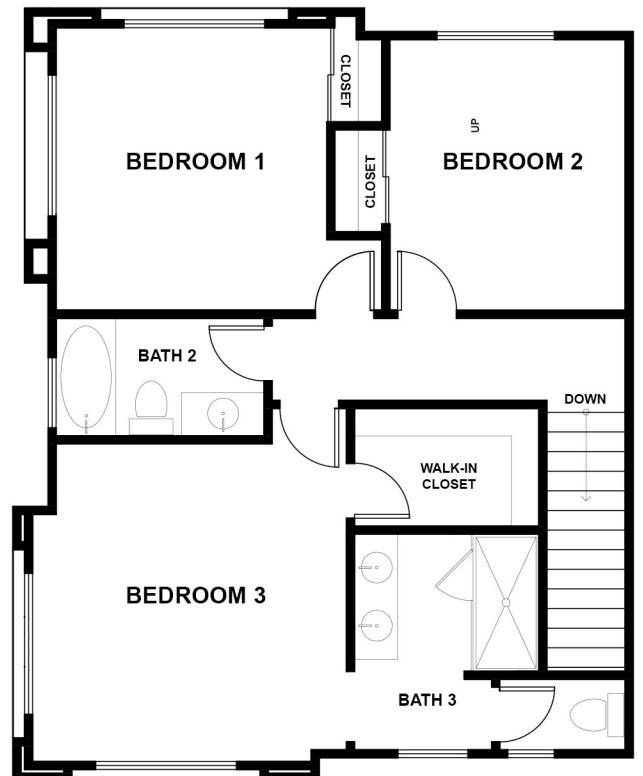
OPTIONAL 1ST FLOOR



2nd Floor



3rd Floor



# RESIDENCE 2A

Approx. 1,580 Sq. Ft.

3 Bedrooms

3 Baths

Patio Porch

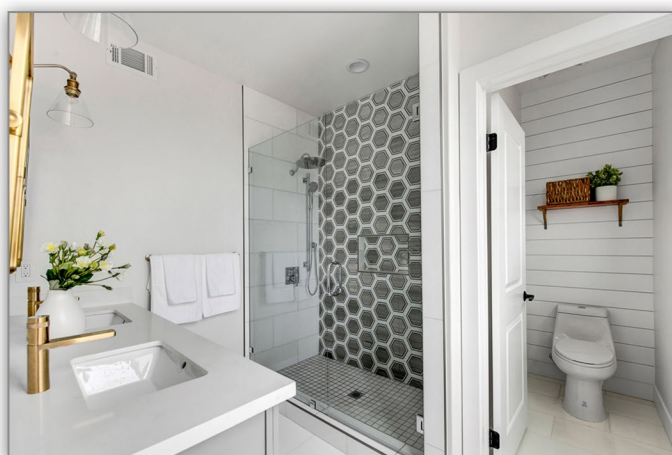
Outdoor Deck

2-Car Garage

Master Suite

In-Suite Bath (Master)

Walk In Closet

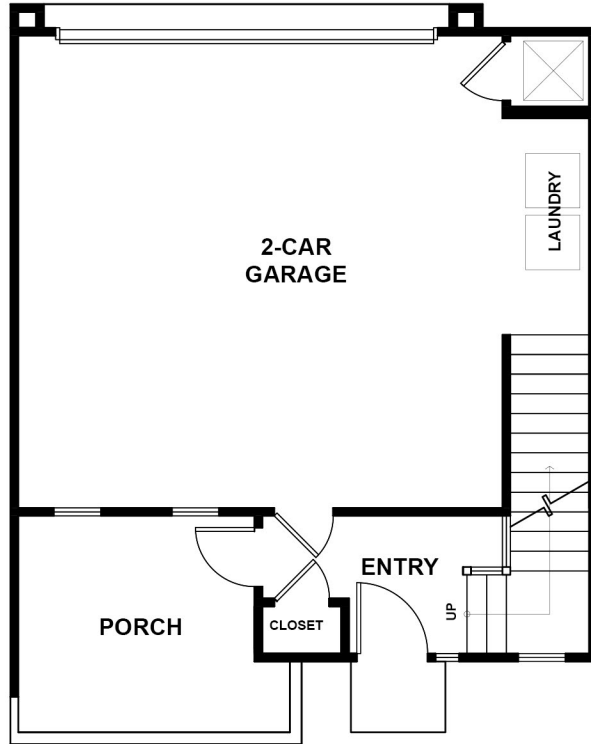


RESIDENCE

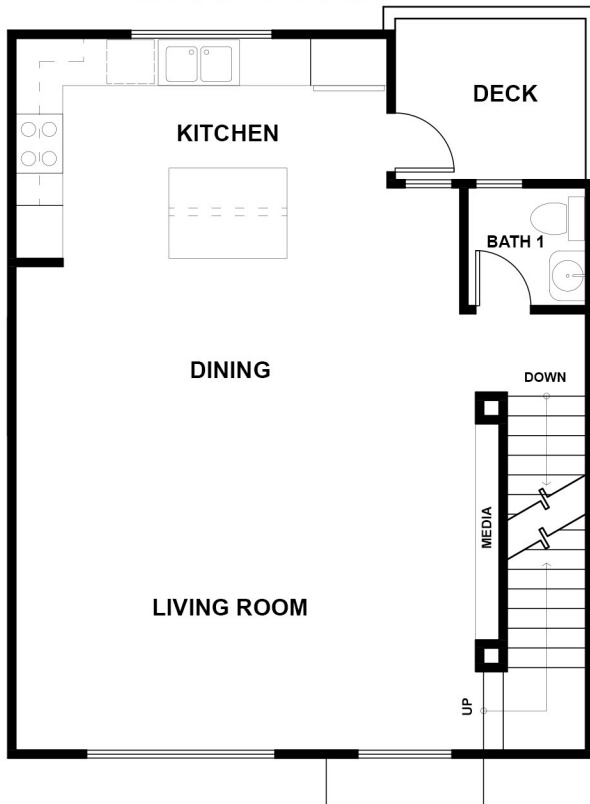
2A

Floor Plan

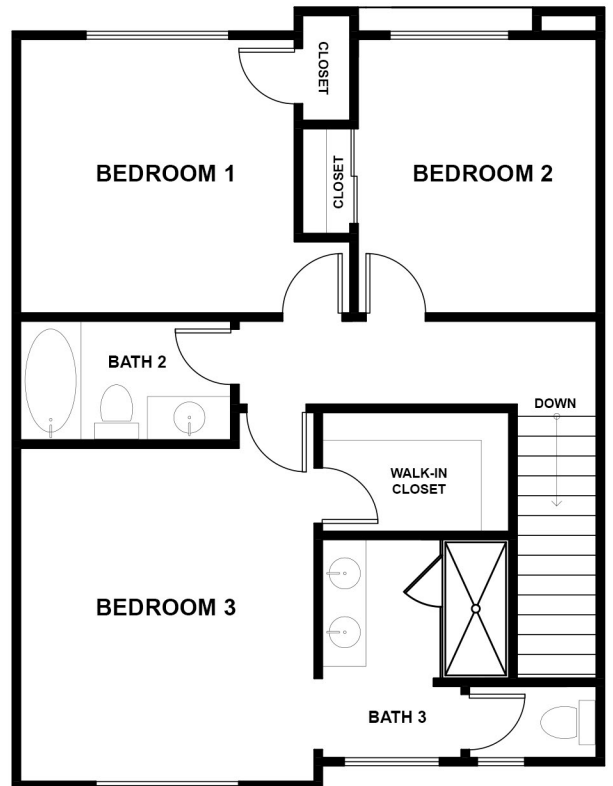
1st Floor



2nd Floor



3rd Floor



---

# Redefining a new Level of Craftmanship

---



## EXCEPTIONAL CRAFTSMANSHIP

- Stylish modern architecture that will impress and inspire your neighbors
- Dunn Edwards designer interior and exterior color palettes
- Solid wood front door with high quality hardware
- Attached 2-car garage with a solid roll-up garage door with opener and wireless transmitter

## EXCEPTIONAL DETAILS

- Dramatic LED ceiling lights
- Upgraded plush carpet included
- Slab marble or quartz countertops (select models)
- Natural wood closet poles

## GOURMET CHEF-INSPIRED KITCHEN

- Brand name stainless steel appliance package including cooktop, hood, oven and dishwasher
- Top quality wood cabinets with concealed and soft close hinges, soft close drawer guides and adjustable shelves
- Stainless steel double basin kitchen sink with a branded kitchen faucet and garbage disposal
- Adequate electrical outlets throughout for convenience
- Ample cabinets for storage

## LUXURIOUS MASTER SUITES

- Spacious master bedroom suite with ample lighting
- Large and spacious designer walk-in closets
- Luxurious master bath with oversize standing shower and clear glass enclosure
- Compartmentalized bath with dual vanities
- Separate private room for toilets
- Dual under mount sinks with designer style faucets
- Pre-wired for a luxurious chandelier



# SITE PLAN MAP

## LEGEND



RESIDENCE 1A



RESIDENCE 2A



This site plan map is for general orientation purposes and is not drawn to scale or accuracy. NRI Group does not represent or guarantee this map to be accurate and it is subject to change and modification at anytime without notice. Floor plans and renderings are artists' conceptions are not intended to be an exact replica of homes or landscaping. NRI Group does not control and makes no representations or guarantees regarding future development or uses adjacent or surrounding the community. The map does not constitute any representation or guarantee that the community or surrounding area will be built out, developed or operated as shown. NRI Group, a licensed real estate broker DRE # 01961796

---

# NEIGHBORHOOD INFORMATION

---



## SCHOOL INFORMATION

### Schmitt Elementary School

7200 Trask Avenue  
Westminster, CA 92683  
(714) 894-7264

### Johnson Middle School

13603 Edwards Street  
Westminster, CA 92683  
(714) 894-7244

### Westminster High School

14325 Goldenwest Street  
Westminster, CA 92683  
(714) 893-1381

## FLOOR PLAN

LURE Residences consists of 16 homes with two different floor plans available

|                     |            |             |                   |
|---------------------|------------|-------------|-------------------|
| <b>Residence 1A</b> | 3 Bedrooms | 3 Bathrooms | 1,577 square feet |
| <b>Residence 2A</b> | 3 Bedrooms | 3 Bathrooms | 1,647 square feet |

## HOMEOWNER'S ASSOCIATION

All residences will automatically be a part of the Lure Homeowner's Association



---

LIVE THE LIFE  
YOU HAVE ALWAYS  
IMAGINED

---



# LURE

---

## WESTMINSTER

7207 21st Street, Westminster, CA

Tel. (657) 233 - 5233

Fax. (866) 383 - 0411

[lure@newtrustrealty.com](mailto:lure@newtrustrealty.com)



NRI Group (New Home Division)  
12962 Main Street, Garden Grove, CA 92840  
tel. 657-233-5233  
fax. 866-383-0411

*NRI Group is solely responsible for the sale of homes in this community. NRI Group is not designing or constructing any homes in this community. Prices, specifications and availability are subject to change without notice. Square footage is an approximation. Dates and times are subject to change without notice. Actual homes as constructed may not contain the features and layouts depicted and may vary from image(s). NRI Group reserves the right to change design, specifications, price, square footage, and other necessary development details without notice or obligation. NRI Group, a licensed real estate broker California DRE # 01961796*