

DENN ENGINEERS

3914 DEL AMO BLVD, SUITE 921
TORRANCE, CA 90503 (310) 542-9433

SURVEY AND TOPOGRAPHY

FOR
ANN CHEUNG

JOB No. 20-205

JOB ADDRESS

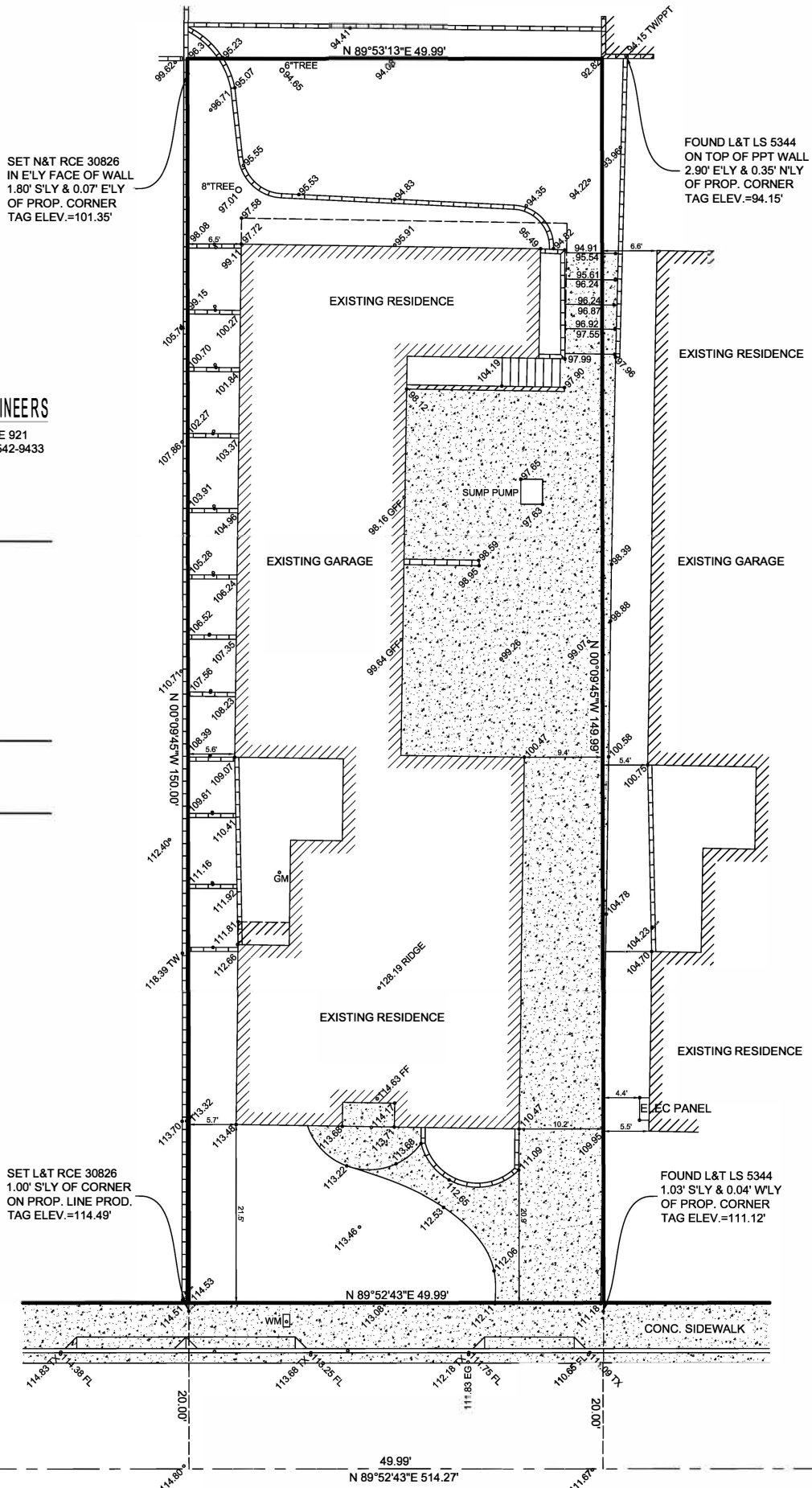
1921 VORHEES AVENUE
REDONDO BEACH, CA 90278

LEGAL DESCRIPTION

LOT 29, BLOCK 81
REDONDO VILLA TRACT B
M.B. 11-1110-111
APN 4155-013-031



SCALE: 1" = 20'



SET L&T RCE 30826
1.00' S'LY OF CORNER
ON PROP. LINE PROD.
TAG ELEV.=114.49'

FOUND L&T LS 5344
1.03' S'LY & 0.04' W'LY
OF PROP. CORNER
TAG ELEV.=111.12'

SET N&T RCE 30826
IN E'LY FACE OF WALL
1.80' S'LY & 0.07' E'LY
OF PROP. CORNER
TAG ELEV.=101.35'

FOUND L&T LS 5344
ON TOP OF PPT WALL
2.90' E'LY & 0.35' N'LY
OF PROP. CORNER
TAG ELEV.=94.15'

VOORHEES AVENUE