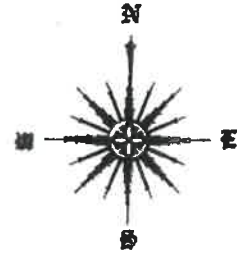
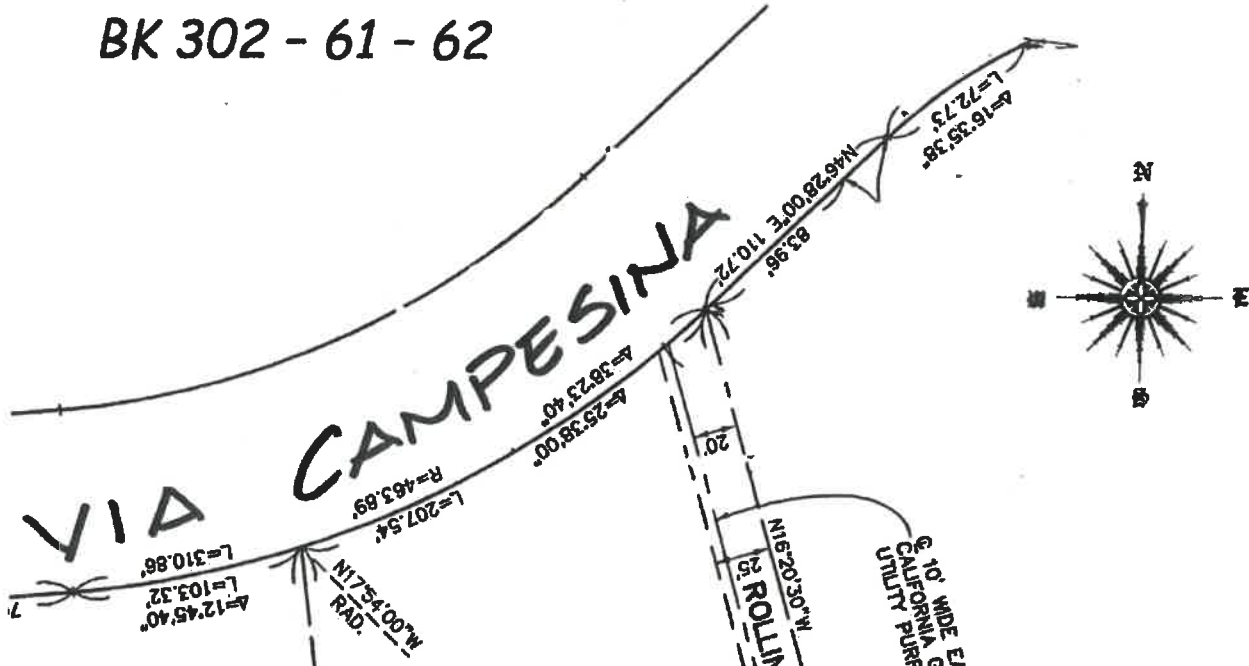




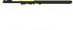



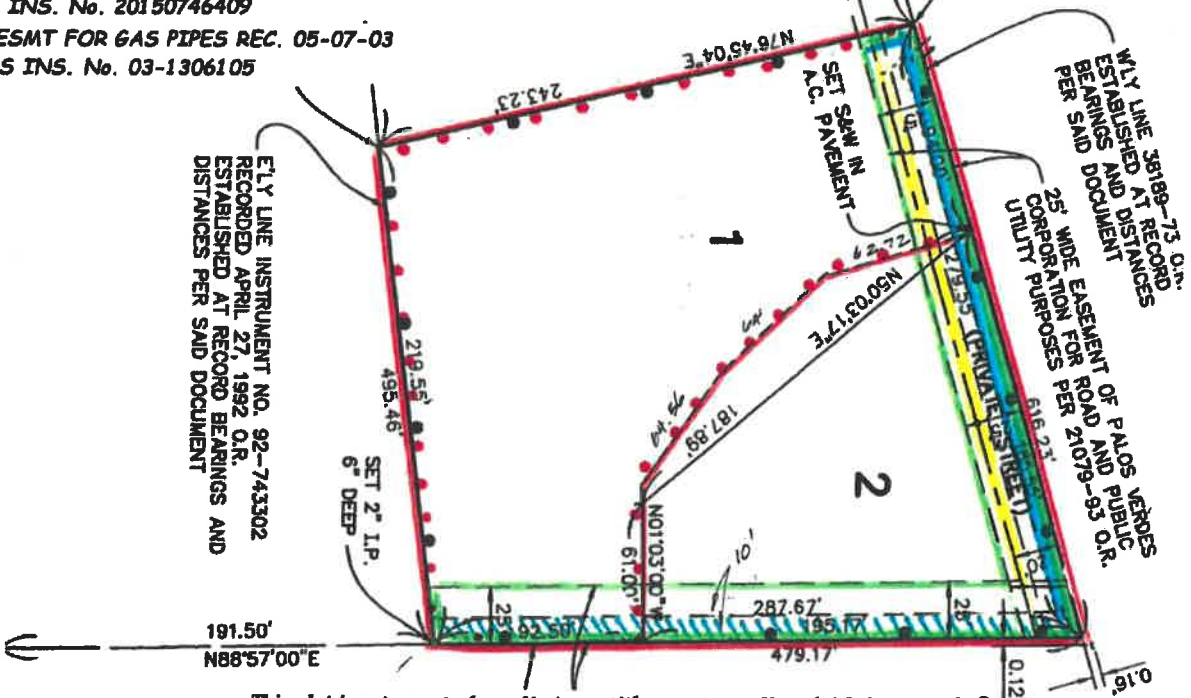


PARCEL MAP No. 24679

BK 302 - 61 - 62



-  PARCEL 1 (FEE)
-  PARCEL 2 (FEE)
-  25' ESMT FOR ROAD & UTILITIES REC. IN BK 21079 PG 93 O.R.
-  10' ESMT FOR PUBLIC UTILITIES REC. IN BK 39851 PG 365 O.R.
-  ESMT FOR SANITARY SEWER & PUBLIC UTILITIES AS SHOWN OR DEDICATED ON PARCEL MAP
-  ESMT FOR WATERLINES REC. 01-11-2002 AS INS. No. 02-78505
-  10' ESMT FOR PUBLIC UTILITIES REC. 06-23-2015 AS INS. No. 20150746409
-  10' ESMT FOR GAS PIPES REC. 05-07-03 AS INS. No. 03-1306105



ELY LINE INSTRUMENT NO. 92-743302
RECORDED APRIL 27, 1992 O.R.
ESTABLISHED AT RECORD BEARINGS AND
DISTANCES PER SAID DOCUMENT

ELY LINE 38189-73 O.R.
ESTABLISHED AT DISTANCES
BEARINGS AND DOCUMENT
PER SAID DOCUMENT

This plat is not a part of a preliminary title report or policy of title insurance.

Progressive Title Company does not guarantee the square footage or lot size as shown on this plat.

Easements and other matters depicted hereon are provided as a courtesy only and no representation is made as to the accuracy or completeness thereof. The company assumes no liability for any loss occurring by reason of reliance thereon.