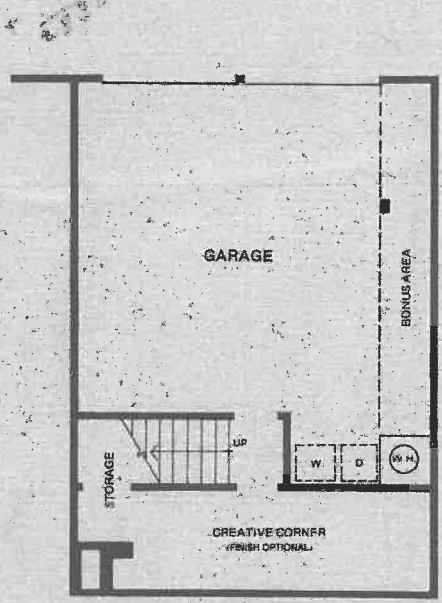
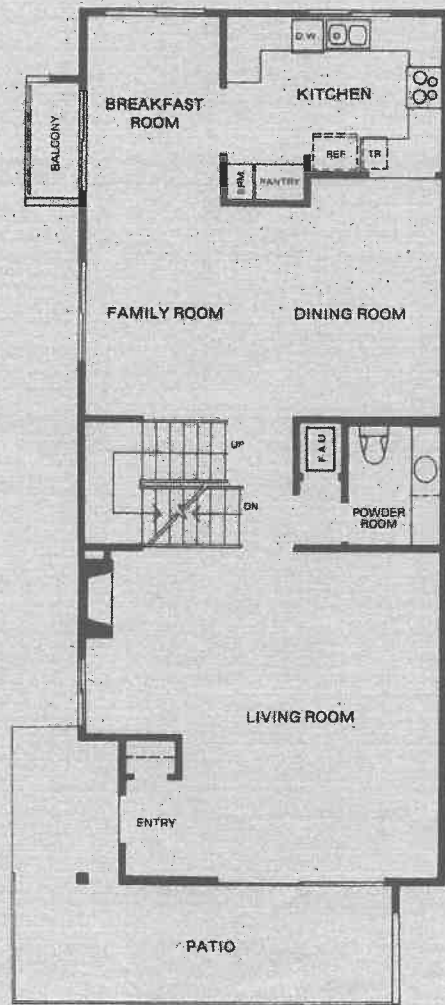


THE ALTA MIRA PLAN 3282 E

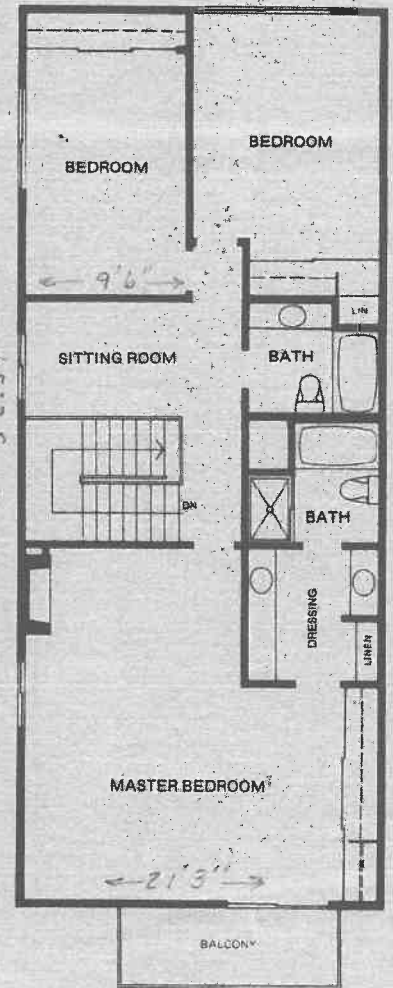
Three Bedrooms • Master Bedroom Suite with Fireplace, Dressing Room and Balcony • Two Baths • Powder Room • Sitting Room • Living Room with Fireplace • Family Room • Dining Room • Breakfast Room with Balcony • Kitchen • Patio • Bonus Area off Garage • Creative Corner • Two-Car Garage with Automatic Door Opener



GARAGE LEVEL



FIRST FLOOR



SECOND FLOOR

THE ALTA MIRA PLAN 3282 E

| | |
|----------------|------------------|
| LIVABLE AREA | 2451 s.f. |
| TWO-CAR GARAGE | 521 s.f. |
| PATIO | 225 s.f. |
| BALCONIES | 85 s.f. |
| TOTAL | 3282 s.f. |

Builder reserves the right to change prices, specifications, and substitute materials where necessary, because of shortages, production scheduling, changes in manufacturers' lines, or other reasons.

MiraVerde

Designed and built with care by B. R. Morris Development Co.
28116 Ridgeway Drive • Rancho Palos Verdes, CA 90274 • (213) 377-9518