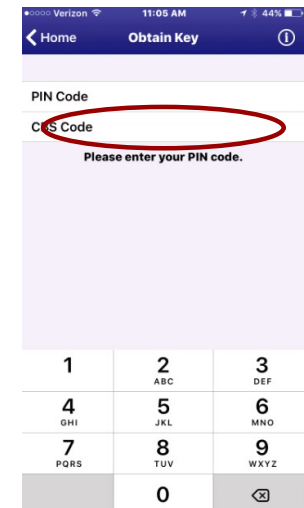
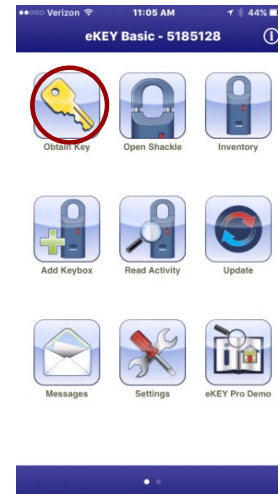
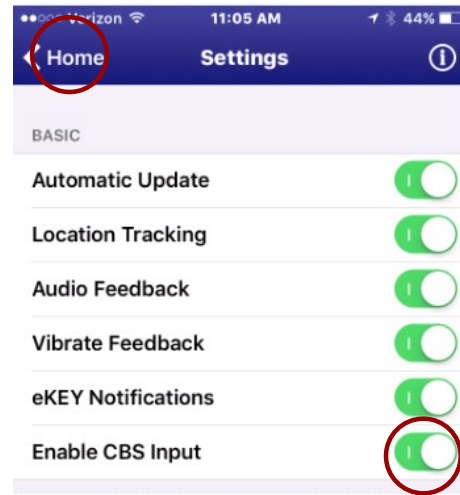
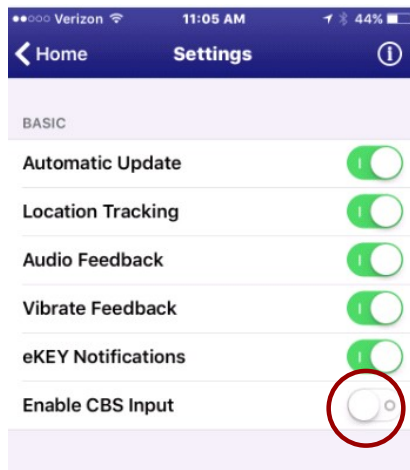
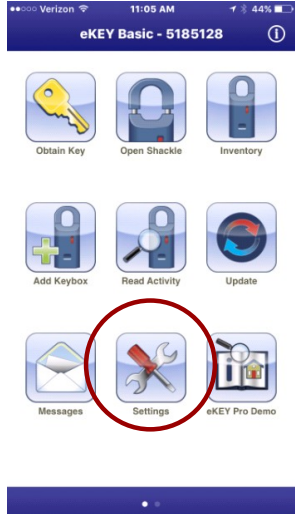


If Using Your Cellphone to Access Lockboxes:



For Supra ActiveKey to Access Lockboxes:

Entering a CBS Code Into Your Key

1. Press **on/off** to turn your ActiveKEY on.
2. Scroll to "Call Before Showing" and press Enter.
3. Enter the CBS code and press **enter**.



Once you've entered the CBS code for a particular KeyBox into your ActiveKEY, follow the standard procedure for releasing the key container.