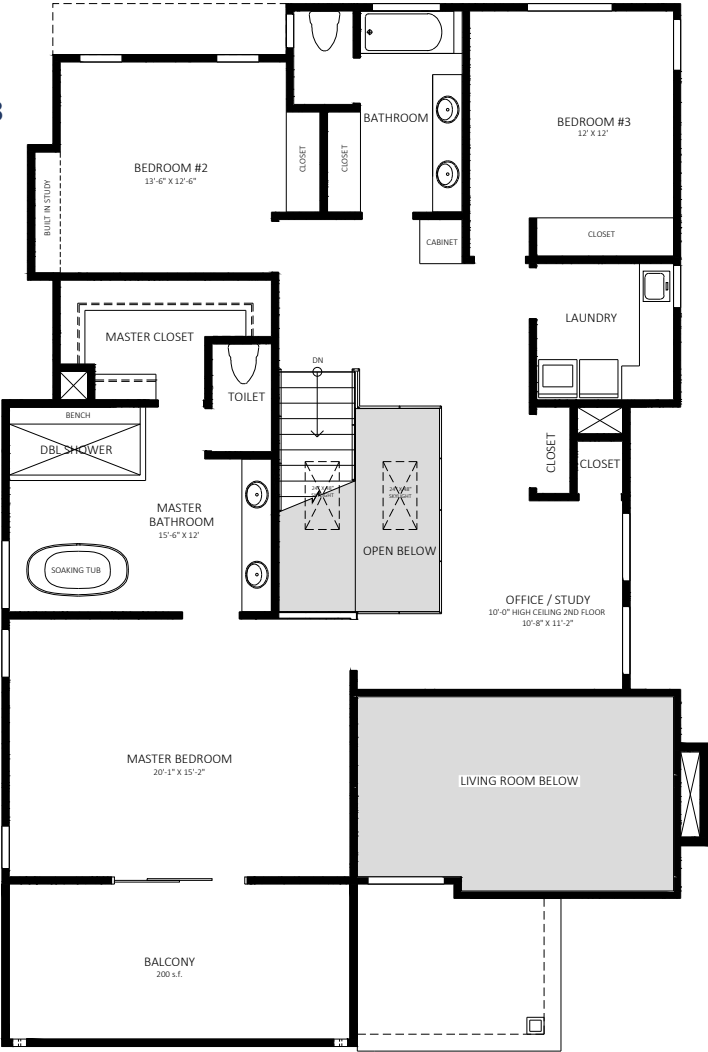


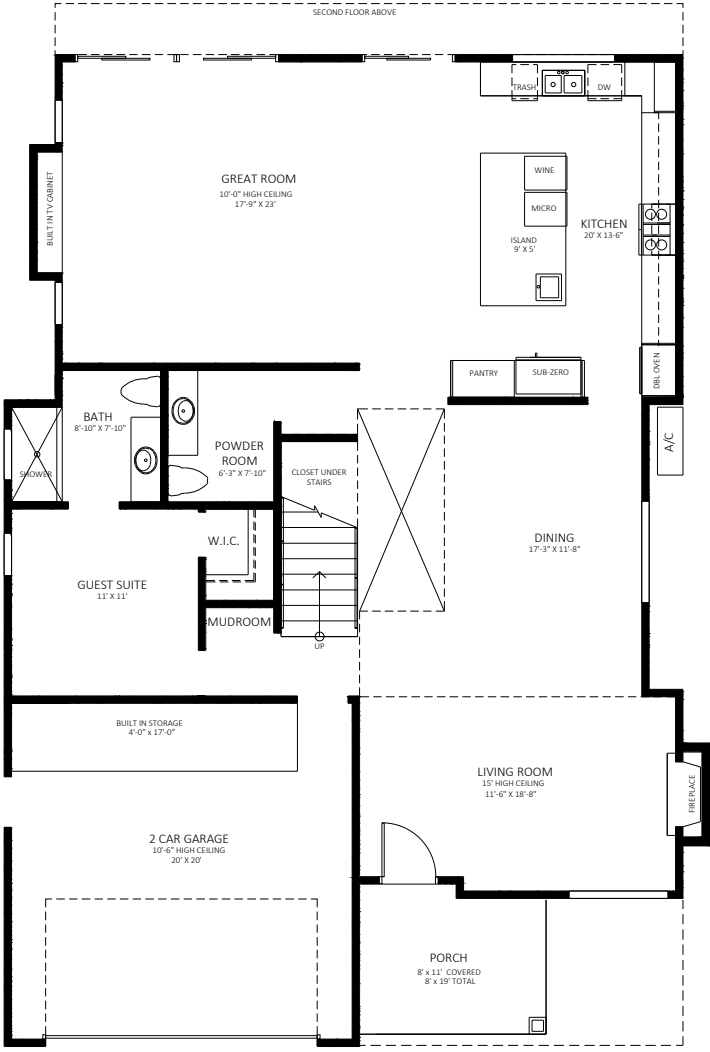
2504 Fisk Ln.  
Redondo Beach, CA 90278

4 bedrooms, 3.5 baths  
2 car garage  
3,347 sq. ft. living space  
4,099 sq. ft. building  
5,250 sq. ft. lot



2ND FLOOR LIV 1,702 s.f.  
BALCONY 200 s.f.  
EST. 2ND FLOOR TOTAL 1,902 s.f.  
TOTAL LIVING 3,347 s.f.  
TOTAL BUILDING 4,099 s.f.

SECOND FLOOR PLAN  
1,902 s.f. TOTAL



1ST FLOOR LIV 1,645 s.f.  
GARAGE 400 s.f.  
PORCH 152 s.f.  
EST. 1ST FLOOR TOTAL 2,197 s.f.  
TOTAL LIVING 3,347 s.f.  
TOTAL BUILDING 4,099 s.f.

FIRST FLOOR PLAN  
2,197 s.f. TOTAL

All measurements are approximate. While deemed reliable, no information on these floor plans should be relied upon without independent verification.