

FOR SALE

2.32 ACRES 145 Avenida Junipero, San Clemente



Build Your Dream Estate!

If you can imagine it... there is room to build it! 2.32 Acres perfectly positioned on the ocean side of the freeway, walking distance to sandy beaches & Blue Pacific! Create that 6,000, 8,000 or 10,000 sq.ft home, guest house, private drive way from two streets, 10-car garage, tennis court, pool and much more.

Check out our layout concept, and as you can see there is plenty of room for your life style and additional improvements including a small par 3 hole for the serious golfer. Close proximity to "La Casa Pacifica" old Western White House. Zoned Canyon Costal, but completely buildable according to the city, call us for details and a personal tour of the parcel.

Dennis Asbury • Broker
(949) 338-3002
dennis@asburybrokerage.com
BRE# 00513162



Landon Asbury • Realtor
(562) 761-5216
landon@asburybrokerage.com
BRE# 01703193

CONCEPT ESTATE

Main house, guest house, swimming pool, tennis court, putting green, & more.



IT'S IN THE DETAILS

This detailed rendering shows an up-close view of the main house, the 10-car garage accessed from Avenida Del Presidente, and an aerial view of the estate.



Dennis Asbury • Broker
(949) 338-3002
dennis@asburybrokerage.com
BRE# 00513162

Asbury
Brokerage Services

Landon Asbury • Realtor
(562) 761-5216
landon@asburybrokerage.com
BRE# 01703193

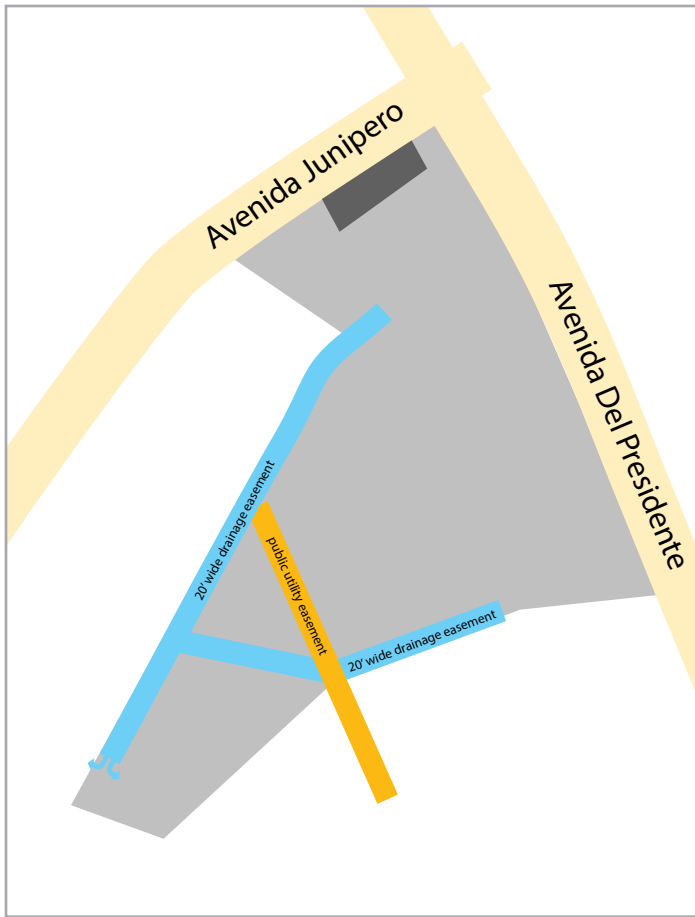
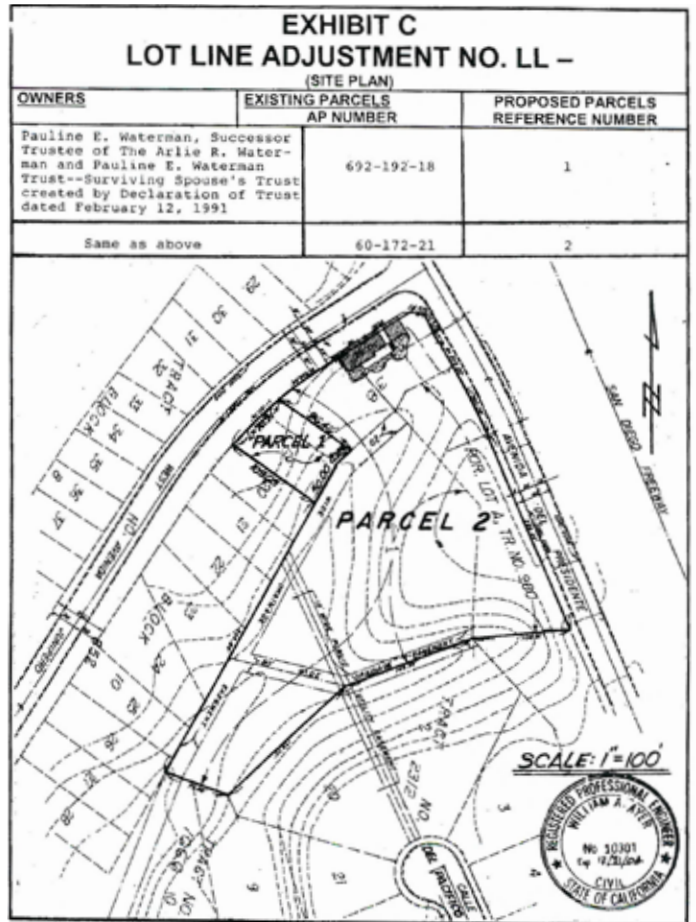


Illustration highlighting the drainage and utility easements



Platt Map from City of San Clemente