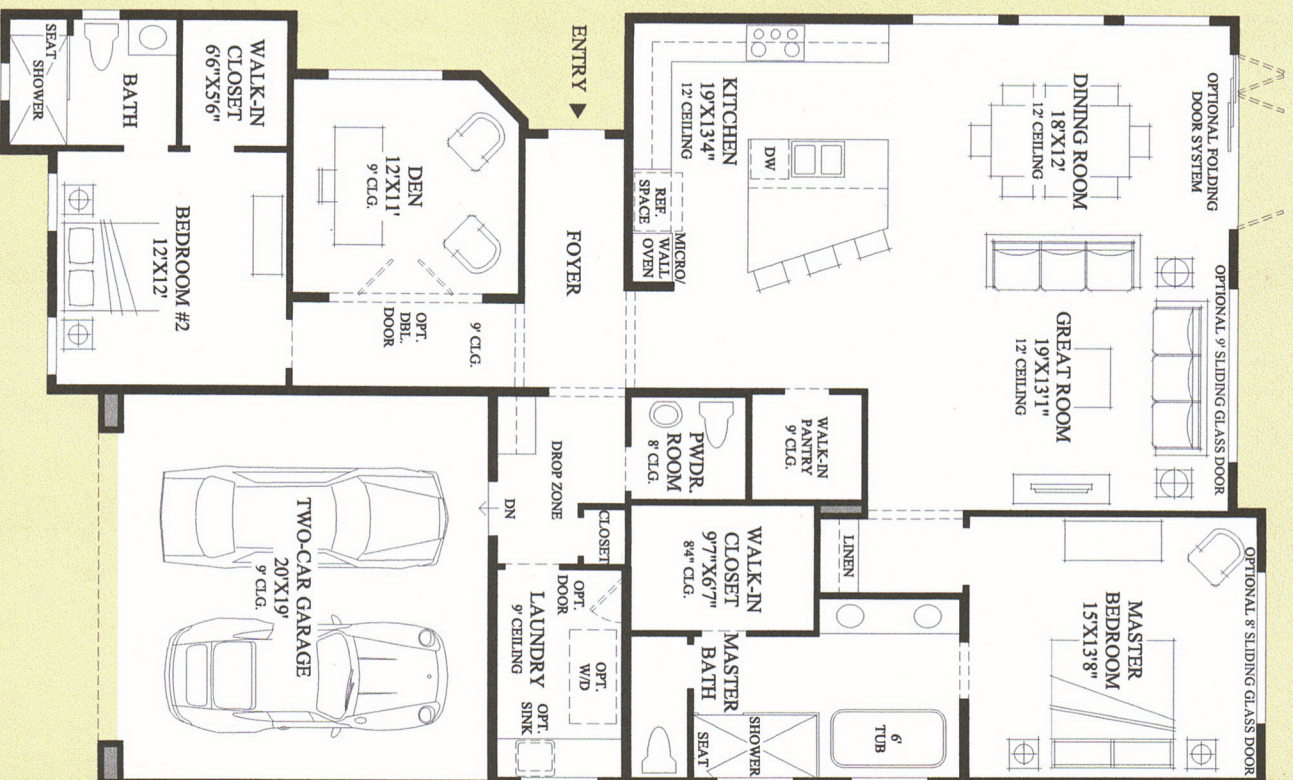


UPGRADES:

Exterior - Front House Custom Porcelanosa Stacked Stone Brick Tile
Exterior - Front House additional sprinklers, path/spot lights and landscaping with Indigo Gravel, Dasyliiron and Barrel Cactus
Exterior - Front House concrete path blocks
Exterior - Front Gate custom 6-feet x 4-feet aluminum pedestrian gate with glass panels and digital keypad lock
Exterior - Front Gate Pre-Wire for Intercom
Exterior - Side House additional sprinklers, spot lights and landscaping with concrete blocks, Mexican Beach Button Pebbles, Agave Cactus and 2 Palo Verde Trees
Exterior - Side House tall square fiberstone planters and extra large Vondom Centro Pot circular planter
Exterior - Pool Area additional sprinklers, spot lights and landscaping with high-quality artificial grass, carolina cherry and ficus hedge plants
Exterior - Pool Area 3 tall white fiberstone planters
Exterior - Pool Area additional concrete patio
Exterior - Additional 10-feet Pool Length
Exterior - Additional pool full length stairs at entry
Exterior - Three separate landscape zoning water valves
Exterior - Front Porch House Entry Wall Custom Porcelanosa Stacked Stone Brick Tile
Exterior - 8-foot High Front Entry Clear Low E Glass Door and Overhead
Exterior - 20 leased solar panels (6.6 kilowatt) provides 100% electrical usage resulting in credits
Garage - Recessed Lighting
Interior - Floor Polished 24"x24" Porcelain Tiles
Great Room - Additional 2nd 9-foot Sliding Glass Patio Door
Great Room - Custom 175 sqft Porcelanosa Porcelain Wall
Great Room - Motorized remote controlled left and right Sliding Door Light Filtering Shades
Great Room - 9 High Windows Film for UV and Solar Heat Blocking and Protection
Great Room - Flat Screen TV Pre-wire
Kitchen - Custom Designed three 16-foot Wenge and Chrome Finish Floating Shelves
Kitchen - Kitchen Backsplash with Entity Glass and Stone Mosaic
Kitchen - Kitchen Trash Recycle Bin
Master Bdrm - 8-foot Sliding Glass Patio Door
Master Bdrm - Custom 350 sqft Wall To Floor Porcelanosa Laminate from Germany

Master Bdrm - Motorized remote controlled Full Wall 13-foot x 10-foot Blackout Linen Drapery
Master Bdrm - Recessed Lighting
Master Bdrm - Flat Screen TV Pre-wire
Master Bdrm - LG 65-inch Flat Screen TV and Bose Soundbar
Master Bath - Shower Bench
Master Bath - 5-1/2 ft Full Height Mirror
Master Bath - 5-foot Wide Half Inch Thick Shower Glass
Master Bath - Surface Mounted JBox Light Receptacle
Master Bath - Modern Fiber Optic LED Chandelier and 2 matching Mirror Sconces
Master Bath - Flat Screen TV Pre-wire
Master Bath - Samsung 43-inch Flat Screen TV
2nd Bdrm - Top-Down Bottom-Up shades for left and right windows
2nd Bdrm - Modern Circular LED Pendant Lighting from PageOne Canada
2nd Bdrm - Flat Screen TV Pre-wire
2nd Bdrm - Samsung 55-inch Flat Screen TV and Sonos Soundbar
2nd Bath - Top-Down Bottom-Up window shade
2nd Bath - 6-1/2 ft Full Height Mirror
3rd Bdrm - Additional 3rd Bedroom
3rd Bdrm - Motorized remote controlled dual sheer windows shade
3rd Bdrm - Modern Linear LED Pendant Lighting from PageOne Canada
3rd Bath - Additional 3rd Bathroom

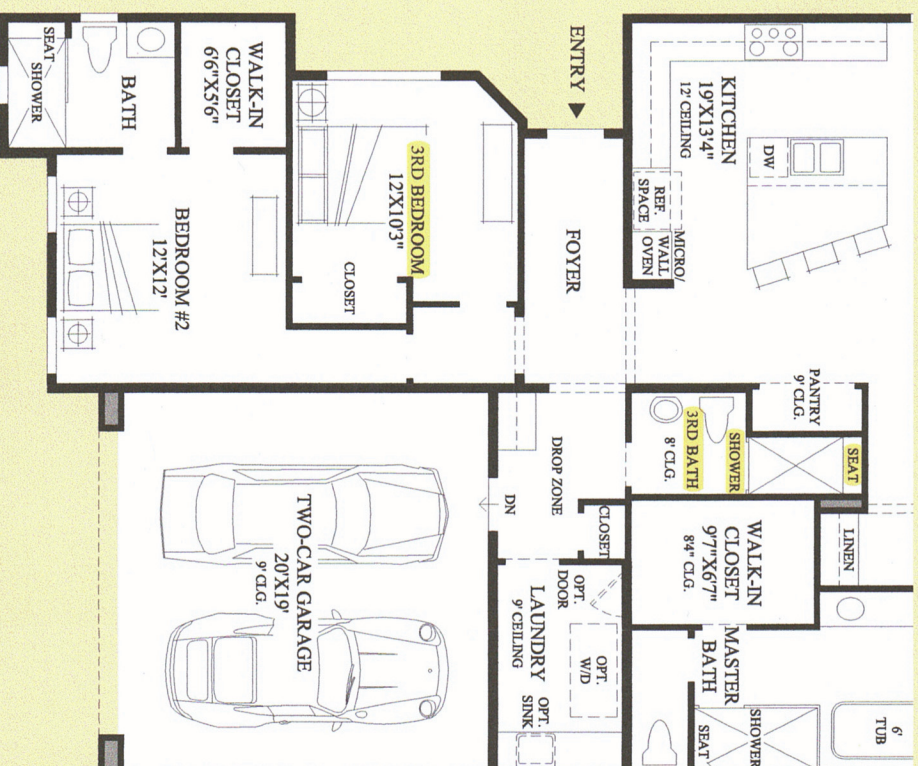
DRAFT



Floor Plan

THE BRIZO HIGHLIGHTS

- Upon entering the home, the splendid foyer separates the private and entertaining areas of the home.
- Around the corner from the foyer is an open kitchen and great room layout that features a 12' ceiling and ample space for entertaining guests.
- The desirable kitchen is equipped with a unique center island and plenty of cabinet and counter space.
- A variety of windows and a 9' sliding glass door let an abundance of light into the great room and dining room.
- The master bedroom is tucked away from the great room and is distinguished by a sizeable master bath that features a dual-sink vanity, a standalone soaking tub, a glass-enclosed shower, a private water closet, and a substantial walk-in closet.
- Also included is a private den and a generous secondary bedroom that is complete with a private bath and a walk-in closet.



SHOWN WITH OPTIONAL ADDITIONAL
3RD BEDROOM AND 3RD BATHROOM

DRAFT