

# CORNER RECORD

Agency Index \_\_\_\_\_

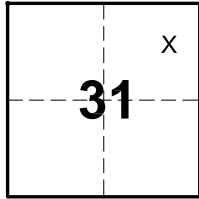
Document Number \_\_\_\_\_

City of Palm Desert County of RIVERSIDE, California

Brief Legal Description Lot 43, TR. 14082, MB 113/38-41; Portion of NE 1/4, Section 31, T5S, R6E, SBB&M

### CORNER TYPE

### COORDINATES (Optional)



- Government Corner
- Meander
- Rancho
- Control
- Property
- Other

Date of Survey 7/08/2020

N. \_\_\_\_\_ E. \_\_\_\_\_

Elevation \_\_\_\_\_

Units  Metric  U.S. Survey Foot

Horizontal Datum \_\_\_\_\_

Zone \_\_\_\_\_ Epoch Date \_\_\_\_\_

Vertical Datum \_\_\_\_\_

Complies with Public Resources Code §§8801-8819

Complies with Public Resources Code §§8890-8902

PLS Act Ref:  8765(d)  8771  8773  Other: \_\_\_\_\_

Corner/Monument:  Left as found  Established  Rebuilt  Pre-Construction

Found and tagged  Reestablished  Referenced  Post-Construction

Narrative of corner identified and monument as found, set, reset, replaced, or removed:

See sheet #2 for description(s):

SEE BACKSIDE

### SURVEYOR'S STATEMENT

This Corner Record was prepared by me or under my direction in conformance with the Professional Land Surveyors' Act on July, 2020.

Signed \_\_\_\_\_ P.L.S. or R.C.E.No. 7627



### COUNTY SURVEYOR'S STATEMENT

This Corner Record was received \_\_\_\_\_

and examined and filed \_\_\_\_\_

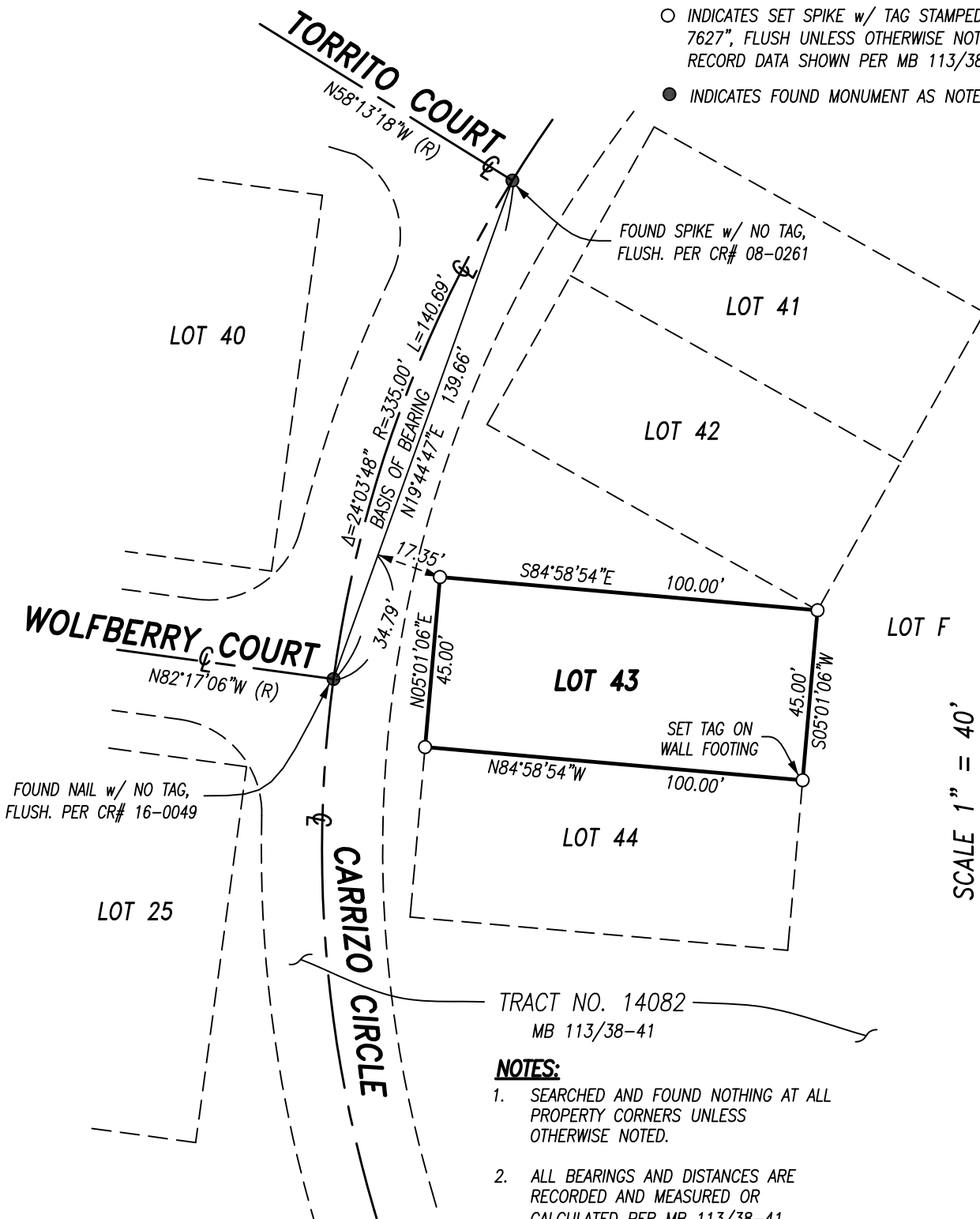
Signed \_\_\_\_\_ P.L.S. or R.C.E. No. \_\_\_\_\_

Title \_\_\_\_\_

County Surveyor's Comment \_\_\_\_\_

**LEGEND**

- INDICATES SET SPIKE w/ TAG STAMPED, "LS 7627", FLUSH UNLESS OTHERWISE NOTED. RECORD DATA SHOWN PER MB 113/38-41.
- INDICATES FOUND MONUMENT AS NOTED.



TRACT NO. 14082  
MB 113/38-41

**NOTES:**

1. SEARCHED AND FOUND NOTHING AT ALL PROPERTY CORNERS UNLESS OTHERWISE NOTED.
2. ALL BEARINGS AND DISTANCES ARE RECORDED AND MEASURED OR CALCULATED PER MB 113/38-41.