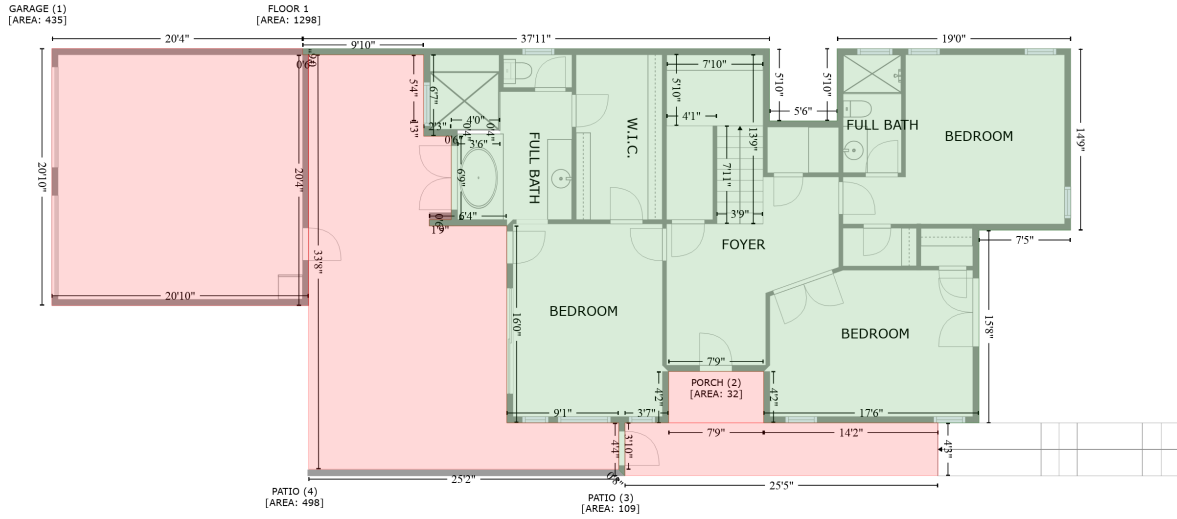


707 Longfellow Avenue, Hermosa Beach, California 90254, United States

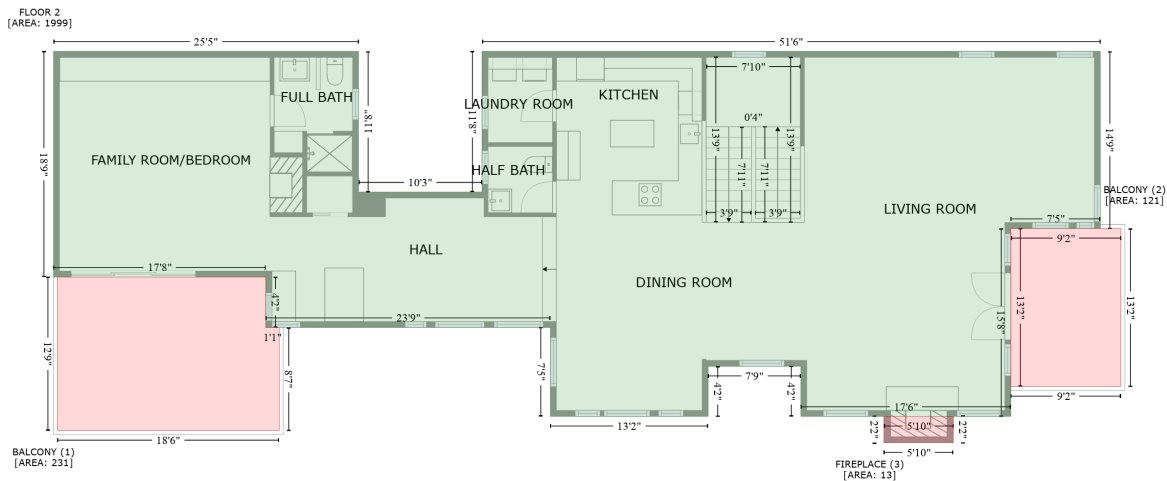
Gross Living Area: 3297 sq. ft



Space	Area (sq. ft)	Calculation
FLOOR 1 (Living area)	1298	Coordinate Polygon Area Algorithm using inches $-((417.2 + 417.2) * (402.9 - 473.3) + (417.2 + 483.1) * (473.3 - 473.3) + (483.1 + 483.1) * (473.3 - 402.9) + (483.1 + 710.9) * (402.9 - 402.9) + (710.9 + 710.9) * (402.9 - 579.7) + (710.9 + 621.5) * (579.7 - 579.7) + (621.5 + 621.5) * (579.7 - 767.2) + (621.5 + 411.5) * (767.2 - 767.2) + (411.5 + 411.5) * (767.2 - 717.2) + (411.5 + 318.8) * (717.2 - 717.2) + (318.8 + 318.8) * (717.2 - 767.2) + (318.8 + 276.2) * (767.2 - 767.2) + (276.2 + 276.2) * (767.2 - 818.9) + (276.2 + 270.2) * (818.9 - 812.9) + (270.2 + 270.2) * (812.9 - 767.2) + (270.2 + 161) * (767.2 - 767.2) + (161 + 161) * (767.2 - 575.5) + (161 + 85.4) * (575.5 - 575.5) + (85.4 + 85.4) * (575.5 - 569.5) + (85.4 + 106.8) * (569.5 - 569.5) + (106.8 + 106.8) * (569.5 - 488.1) + (106.8 + 80) * (488.1 - 488.1) + (80 + 80) * (488.1 - 408.9) + (80 + -38.1) * (408.9 - 408.9) + (-38.1 + -38.1) * (408.9 - 402.9) + (-38.1 + 417.2) * (402.9 - 402.9)) * 0.5 * 0.00694 +$
GARAGE (Non-living area)	435	$-((-38.1 + -38.1) * (402.9 - 408.9) + (-38.1 + -32.1) * (408.9 - 408.9) + (-32.1 + -32.1) * (408.9 - 653.1) + (-32.1 + -282.6) * (653.1 - 653.1) + (-282.6 + -282.6) * (653.1 - 402.9) + (-282.6 + -38.1) * (402.9 - 402.9)) * 0.5 * 0.00694$
PORCH (Non-living area)	32	$-((411.5 + 411.5) * (717.2 - 767.2) + (411.5 + 318.8) * (767.2 - 767.2) + (318.8 + 318.8) * (767.2 - 717.2) + (318.8 + 411.5) * (717.2 - 717.2)) * 0.5 * 0.00694$
PATIO (Non-living area)	109	$-((411.5 + 411.5) * (767.2 - 767.2) + (411.5 + 581.6) * (767.2 - 767.2) + (581.6 + 581.6) * (767.2 - 818.5) + (581.6 + 276.2) * (818.5 - 818.5) + (276.2 + 276.2) * (818.5 - 767.2) + (276.2 + 318.8) * (767.2 - 767.2) + (318.8 + 318.8) * (767.2 - 767.2) + (318.8 + 411.5) * (767.2 - 767.2)) * 0.5 * 0.00694$
PATIO (Non-living area)	498	$-((79.9 + 80) * (409 - 473.3) + (80 + 80) * (473.3 - 488.1) + (80 + 106.8) * (488.1 - 488.1) + (106.8 + 106.8) * (488.1 - 569.5) + (106.8 + 85.4) * (569.5 - 569.5) + (85.4 + 85.4) * (569.5 - 575.5) + (85.4 + 161) * (575.5 - 575.5) + (161 + 161) * (575.5 - 767.2) + (161 + 270.2) * (767.2 - 767.2) + (270.2 + 270.2) * (767.2 - 812.5) + (270.2 + -32.1) * (812.5 - 812.5) + (-32.1 + -32.7) * (812.5 - 409) + (-32.7 + 79.9) * (409 - 409)) * 0.5 * 0.00694$

707 Longfellow Avenue, Hermosa Beach, California 90254, United States

Gross Living Area: 3297 sq. ft



Space	Area (sq. ft)	Calculation
FLOOR 2 (Living area)	1999	$-\left(-43.3 + -43.3\right) * \left(383.2 - 523.6\right) + \left(-43.3 + 80.1\right) * \left(523.6 - 523.6\right) + \left(80.1 + 80.1\right) * \left(523.6 - 383.2\right) + \left(80.1 + 698.3\right) * \left(383.2 - 383.2\right) + \left(698.3 + 698.3\right) * \left(383.2 - 560\right) + \left(698.3 + 608.9\right) * \left(560 - 560\right) + \left(608.9 + 608.9\right) * \left(560 - 747.5\right) + \left(608.9 + 398.9\right) * \left(747.5 - 747.5\right) + \left(398.9 + 398.9\right) * \left(747.5 - 697.5\right) + \left(398.9 + 306.2\right) * \left(697.5 - 697.5\right) + \left(306.2 + 306.2\right) * \left(697.5 - 747.5\right) + \left(306.2 + 148.5\right) * \left(747.5 - 747.5\right) + \left(148.5 + 148.5\right) * \left(747.5 - 658.9\right) + \left(148.5 + -136\right) * \left(658.9 - 658.9\right) + \left(-136 + -136\right) * \left(658.9 - 608.5\right) + \left(-136 + -348.3\right) * \left(608.5 - 608.5\right) + \left(-348.3 + -348.3\right) * \left(608.5 - 383.2\right) + \left(-348.3 + -43.3\right) * \left(383.2 - 383.2\right) * 0.5 * 0.00694$
BALCONY (Non-living area)	231	$-\left(-136 + -136\right) * \left(608.5 - 658.9\right) + \left(-136 + -122.7\right) * \left(658.9 - 658.9\right) + \left(-122.7 + -122.7\right) * \left(658.9 - 761.7\right) + \left(-122.7 + -344.3\right) * \left(761.7 - 761.7\right) + \left(-344.3 + -344.3\right) * \left(761.7 - 608.5\right) + \left(-344.3 + -136\right) * \left(608.5 - 608.5\right) * 0.5 * 0.00694$
BALCONY (Non-living area)	121	$-\left(718.9 + 718.9\right) * \left(560 - 717.7\right) + \left(718.9 + 608.9\right) * \left(717.7 - 717.7\right) + \left(608.9 + 608.9\right) * \left(717.7 - 560\right) + \left(608.9 + 718.9\right) * \left(560 - 560\right) * 0.5 * 0.00694$
FIREPLACE (Non-living area)	13	$-\left(551.4 + 551.4\right) * \left(747.5 - 773.8\right) + \left(551.4 + 481.9\right) * \left(773.8 - 773.8\right) + \left(481.9 + 481.9\right) * \left(773.8 - 747.5\right) + \left(481.9 + 551.4\right) * \left(747.5 - 747.5\right) * 0.5 * 0.00694$