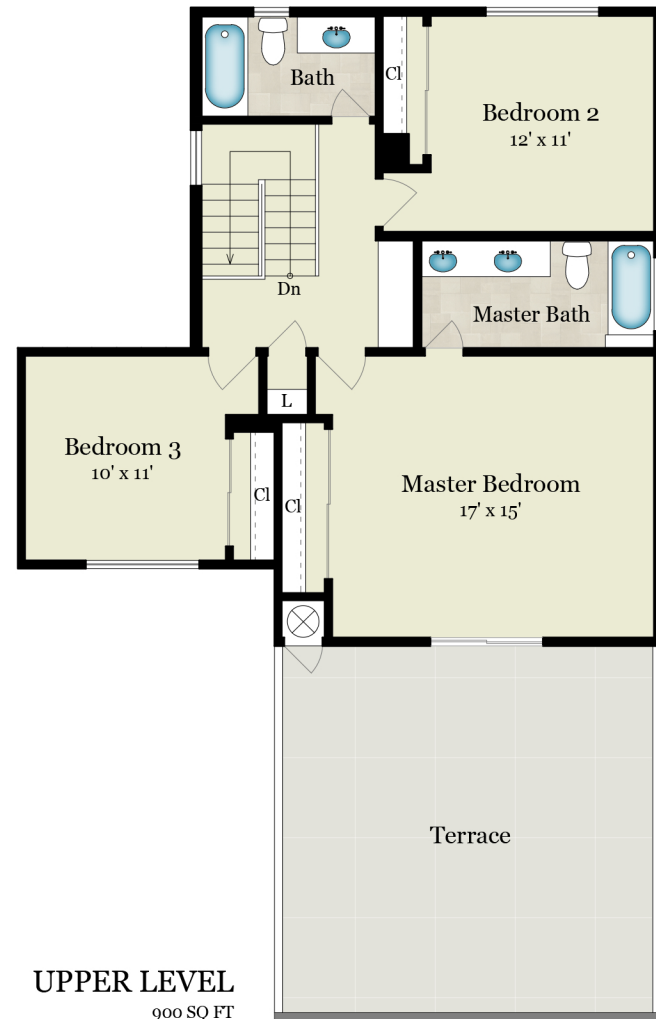
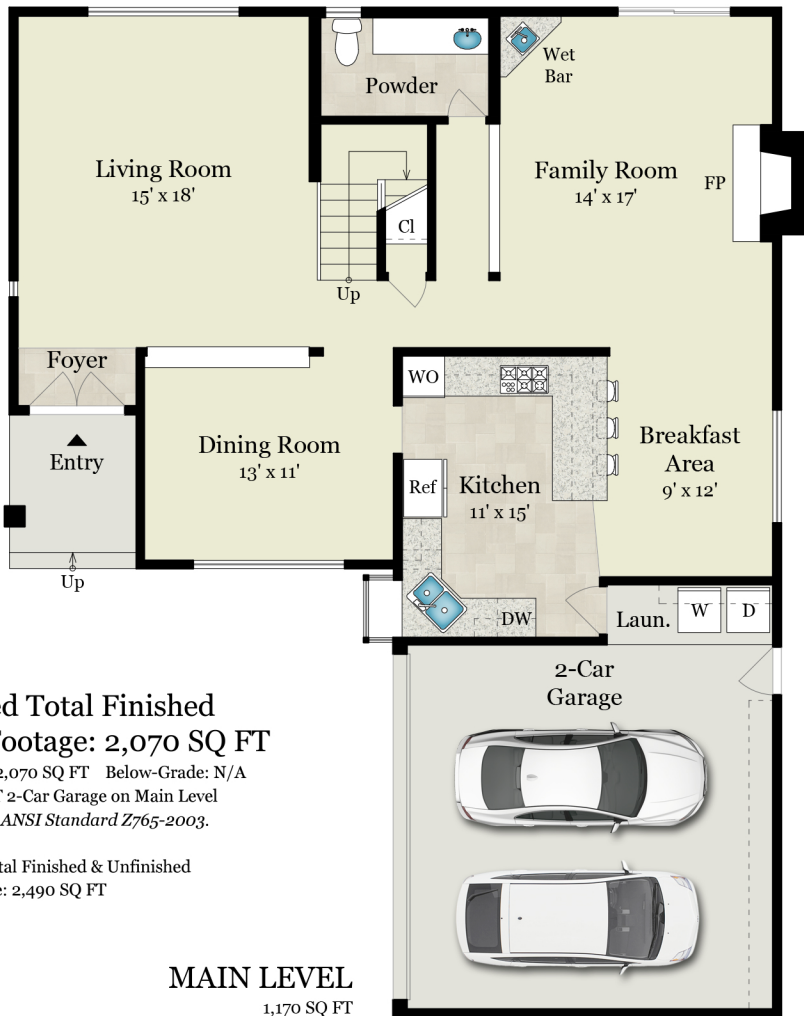


# 1902 CLARK LANE | UNIT B

REDONDO BEACH, CA 90278



**Estimated Total Finished  
Square Footage: 2,070 SQ FT**

Above-Grade: 2,070 SQ FT Below-Grade: N/A  
Plus 420 SQ FT 2-Car Garage on Main Level  
Calculated per ANSI Standard Z765-2003.

\* Estimated Total Finished & Unfinished  
Square Footage: 2,490 SQ FT

