

Included Features

Energy Efficiency

- LED surface-mount lighting throughout
- Rheem® space saving tankless water heater
- Central heating and air conditioning with programmable, night setback, digital thermostat
- Dual glazed vinyl windows
- Water efficient toilets
- Water efficient plumbing
- Low VOC interior paint
- Future conduit for electrical vehicle charging station
- Decorative Wayne Dalton® energy efficient Wi-Fi enabled Garage Door

Exceptional Interiors

- Kwikset® Breton chrome lever handle door hardware throughout
- Polished chrome plumbing fixtures
- Dal Quartz® counters with 4" backsplash at secondary baths
- Elongated toilets in all bathrooms
- Chrome trim with ¼" clear tempered glass in shower at bath 3
- Rectangular undermount sinks at bath 2 and bath 3
- Wall mounted handrails with satin nickel brackets
- Pedestal sink at powder

Spacious Gourmet Kitchens

- Dal Quartz® countertops with 6" backsplash and full backsplash at cooktop
- Kitchen island
- Front control LG® Wi-Fi enabled stainless steel slide-in gas range with convection and 5 burners
- Stainless Steel LG® Microwave and hood stainless steel combination with LED display
- Stainless Steel LG® top control dishwasher with quadwash

- White thermofoil shaker style cabinets with satin nickel pulls
- Stainless steel undermount single bowl sink with Moen® pull down, stainless steel spray faucet
- InSinkErator ½ horsepower garbage disposal

Inspired Primary Suites

- Dal Quartz® counters with 4" backsplash in morning frost color
- 3-wall composite, subway tile shower with seat
- Chrome trim with ¼" clear tempered glass at shower
- Dual rectangular undermount sinks
- Polished chrome hardware
- Primary baths with separate elongated toilets
- Walk-in closets

Refined Exteriors

- Contemporary style architecture
- Black finish address light with matching porch light

Smart Home Features

Throughout each residence, you'll discover hand-selected features and finishes to make life better than ever.

- LG® smart Wi-Fi enabled range
- Honeywell Lyric® T6 smart thermostat
- Ring® Video Doorbell Pro

Personalized Enhancements

Cabrillo Crossing offers many opportunities to personalize your home with a variety of options and upgrades. Please consult a New Homes Sales Counselor for details.



About Brandywine Homes

A family-owned and operated homebuilder and community developer, Brandywine Homes is proud to celebrate over 30 years of developing land and providing quality homes for Southern Californians. We pride ourselves on attracting and retaining the industry's most talented and dedicated employees whose expertise reflects that of our principals.

Our broad capabilities can be seen in the wide variety of housing we have successfully developed — from inspired townhome collections to luxurious, single family homes to semi-custom, estate-sized homes. We offer the diversity necessary to build homes in communities throughout Southern California, from new suburban developments to urban infill locations.

At the foundation of every Brandywine Home is our utmost dedication to excellence. A recognized leader in challenging infill projects, Brandywine continues to revitalize a number of Southern California's oldest and most established towns, rich in history. We build homes that respect and complement the heritage, values and architectural integrity of existing neighborhoods and the people who live there — while also making a positive contribution to the community.

design by PTI.com



Cabrillo Crossing



WELCOME HOME TO CABRILLO CROSSING

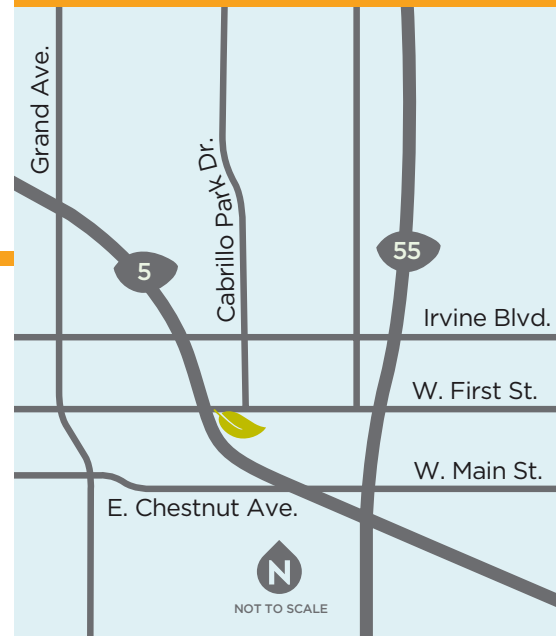
Live, work, play, and thrive in the heart of Orange County at Cabrillo Crossing. These new, modern townhomes are tailor-made for people seeking more space and versatility, live/work floorplans, and innovative features. We're also near major employers and places you already love. Make all aspects of your life more in sync right now at Cabrillo Crossing.



657-216-3840
CabrilloCrossingHomes.com

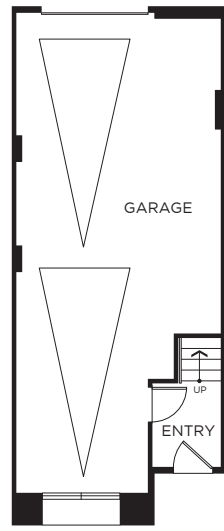
Temp Sales Office
1820 E. 1st Street, Suite 220
Santa Ana, CA 92701

©2024 Brandywine Homes. All Rights Reserved. Brandywine Homes reserves the right to change sales prices, delete or modify floor plans, elevations and specifications without notice or obligation. Models do not reflect racial preference. All renderings are artist's concept. DRE#01381133

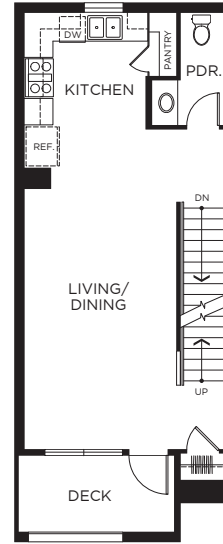


PLAN 1

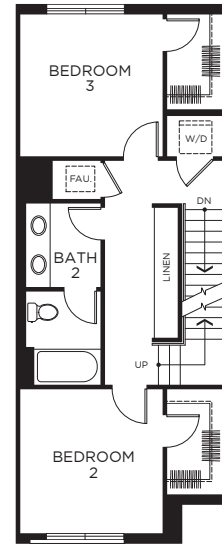
3 Bedrooms • 2.5 Baths
Approx. 1,545-1,550 Sq. Ft.



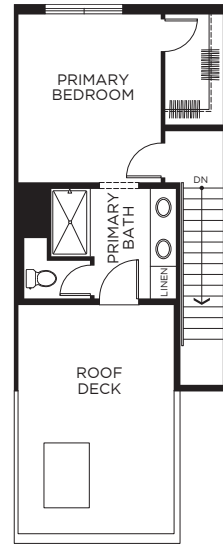
FIRST FLOOR



SECOND FLOOR



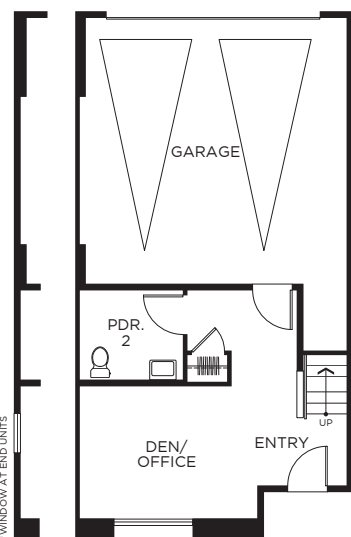
THIRD FLOOR



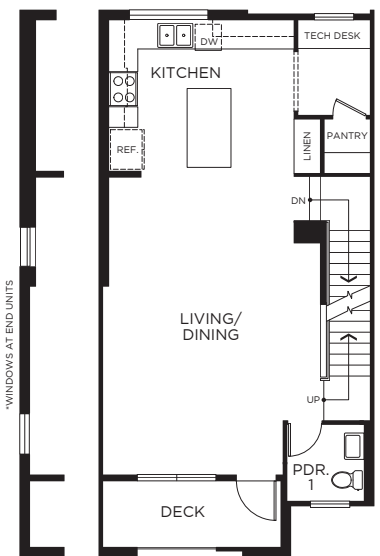
FOURTH FLOOR

PLAN 2

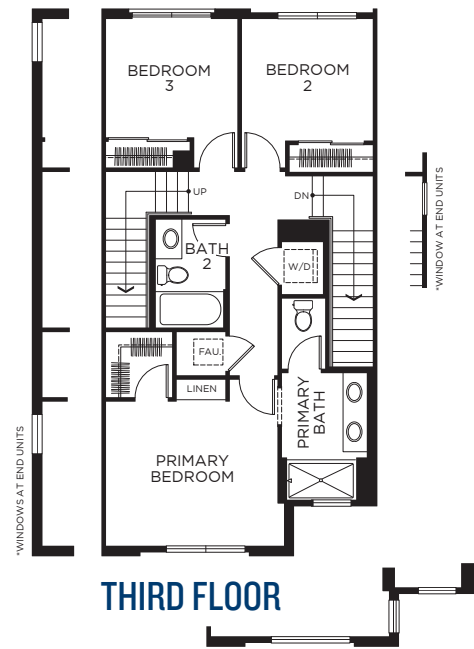
3 Bedrooms + Den/Office
2 Baths + 2 Powder Baths
Approx. 1,838-2,206 Sq. Ft.



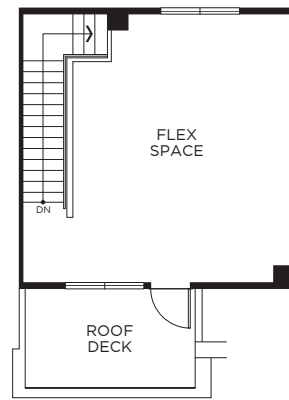
FIRST FLOOR



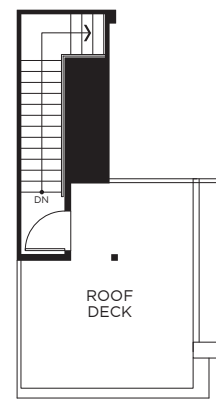
SECOND FLOOR



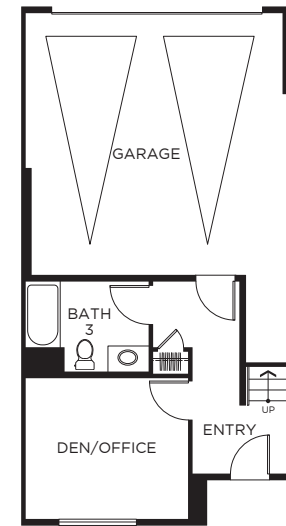
THIRD FLOOR



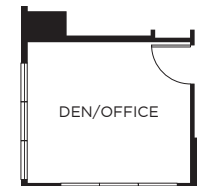
FOURTH FLOOR 2B



FOURTH FLOOR



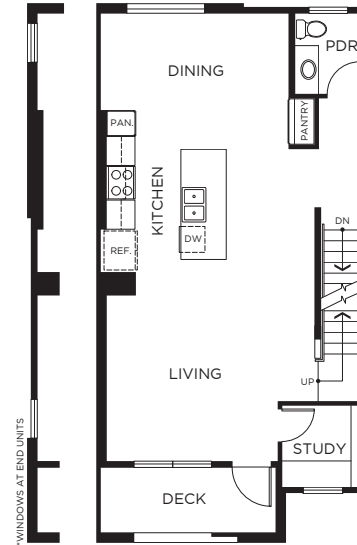
FIRST FLOOR



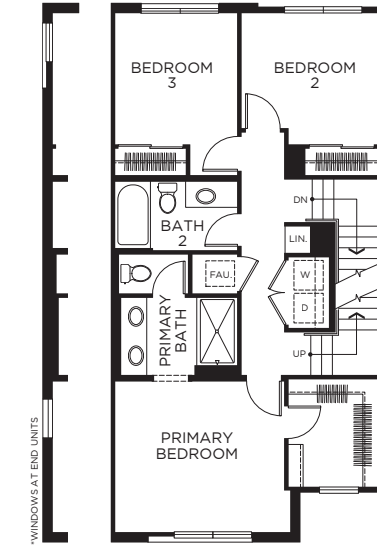
*WINDOWS AT BUILDING 3 STREET FRONTAGE

PLAN 3

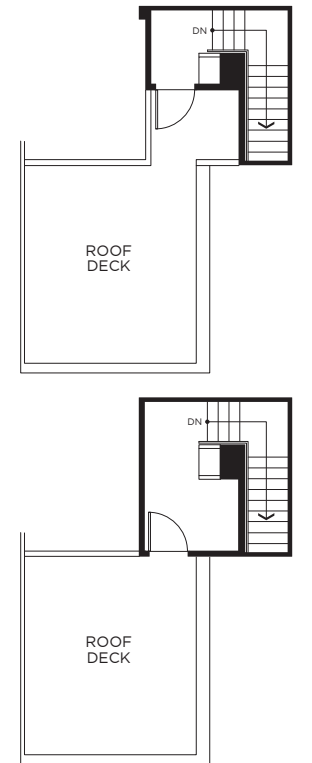
3 Bedrooms + Den/Office
3.5 Baths
Approx. 1,882-1,889 Sq. Ft.



SECOND FLOOR

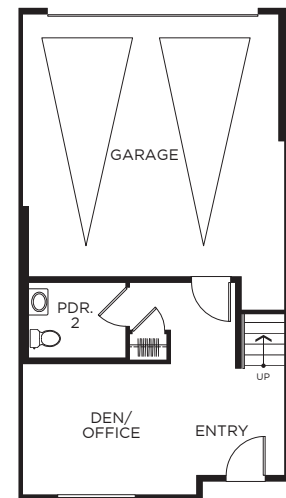


THIRD FLOOR

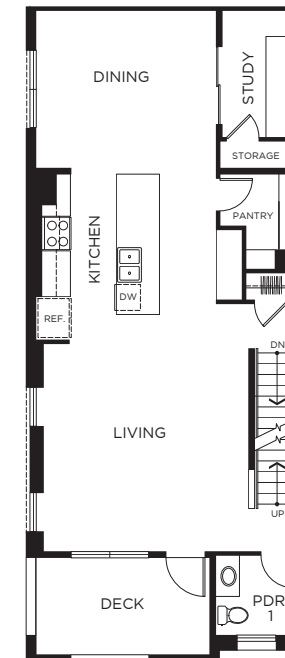


FOURTH FLOOR

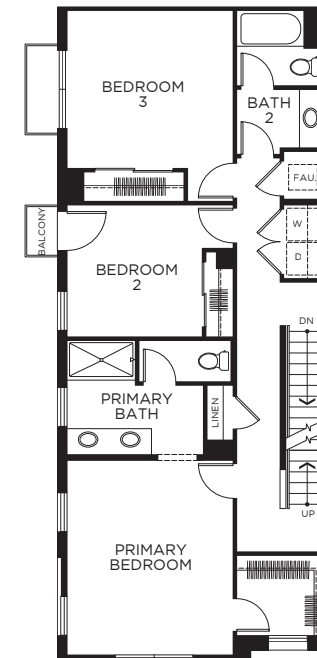
FOURTH FLOOR (3 Alt)



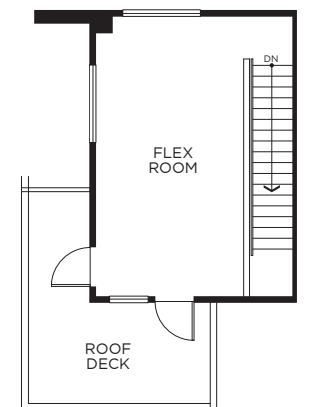
FIRST FLOOR



SECOND FLOOR



THIRD FLOOR



FOURTH FLOOR

PLAN 4

3 Bedrooms + Den/Office
2 Baths + 2 Powder Baths
Approx. 2,263-2,483 Sq. Ft.



Create the life you want

Design makes a difference, and you'll fall in love with it all here! We've included everything on your must-have list. You'll feel instantly right at home — exactly how life should be.