

HERB LAKEY  
SALES DIRECTOR

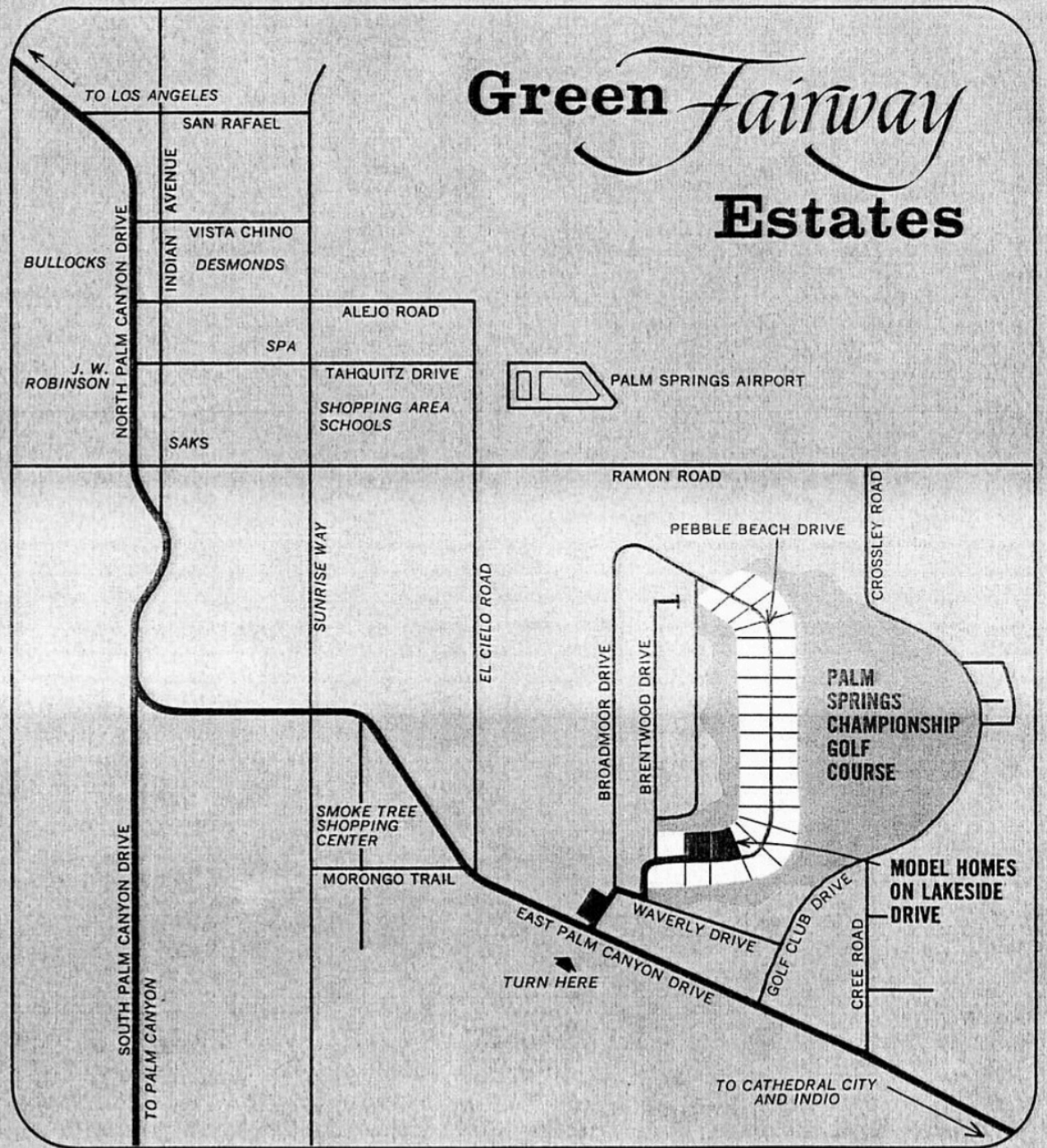


**Green** *Fairway* **Estates**

THREE AND FOUR BEDROOM HOMES  
ON THE FAIRWAY OF THE PALM SPRINGS CHAMPIONSHIP GOLF COURSE  
IN THE CITY OF PALM SPRINGS

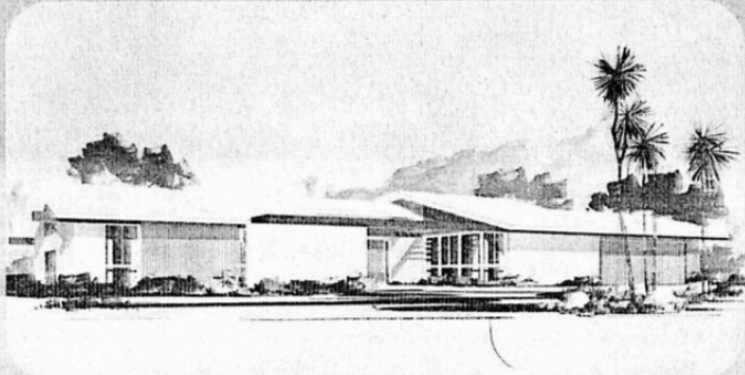
**PERFECT LOCATION**

Green Fairway Estates is within the City of Palm Springs, with the many advantages of all municipal services. Nearby are the fashionable shopping centers (Bullock's, Saks 5th Ave., Robinson's, Haggarty's, W&J Sloane and many more world-famous shops and stores). Super markets are short minutes away, and Palm Springs merchants provide a speedy, complete delivery service. School Buses for all grades serve the area. The Palm Springs Airport, Angels baseball Stadium and virtually all other attractions of the area are close at hand. Green Fairway Estates homes command views of Mount San Gorgonio, the San Jacinto range, the Santa Rosas and the spectacular tramway, as well as inspiring desert vistas. Most important of all, your home is located right on the Palm Springs Championship Golf Course for playing—and the assurance that this great, lush green 6,800-yard 150-acre expanse is your permanent "back yard." This is an 18-hole, 72-par course that will challenge and delight you endlessly. And remember—this is your championship course. No club membership dues or assessments, only low green fees. For your additional enjoyment, an attractive club house is in the approved-for-building stage.

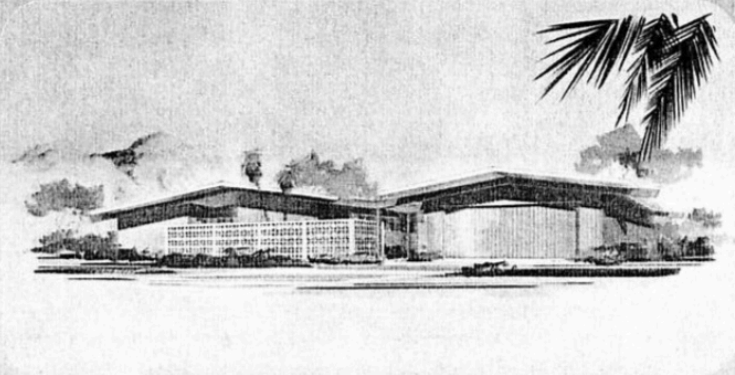


**SELECT YOUR 3-BEDROOM HOME FROM NINE DISTINCTIVE EXTERIOR STYLES**

*Both front and rear elevations are completely finished in detail to be admired from the street and your "backyard" Golf Course.*



ST. ANDREWS ELEVATION A



THE HAGUE ELEVATION B

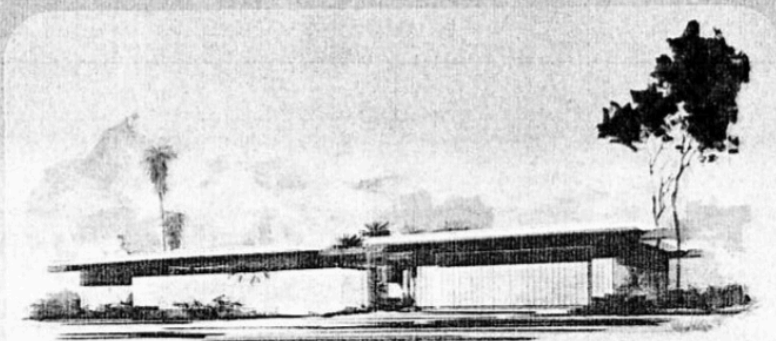


**THREE BEDROOM FLOOR PLAN:**

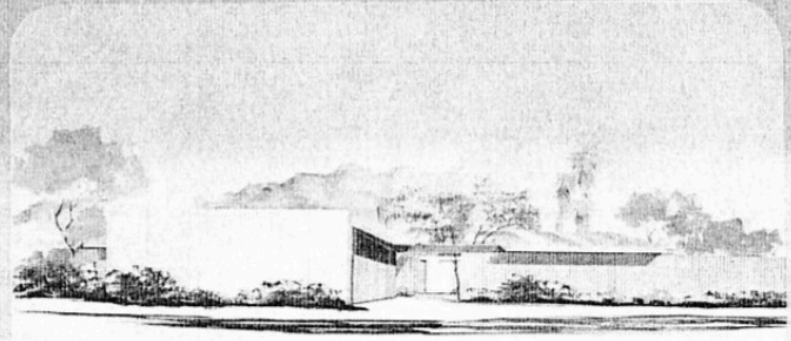
A unique concept based on desert and golf course living. The plan offers bi-functional advantages with quiet areas separated from active living sections by an attractive, secluded atrium. The master bedroom includes a study or sitting room area. Living room and dining area are separate yet both have the feel of manor house spaciousness. The garage is oversize to accommodate automobiles, electric golf carts, work area and storage.

DESIGNED BY DONALD A. WEXLER, AIA, PALM SPRINGS

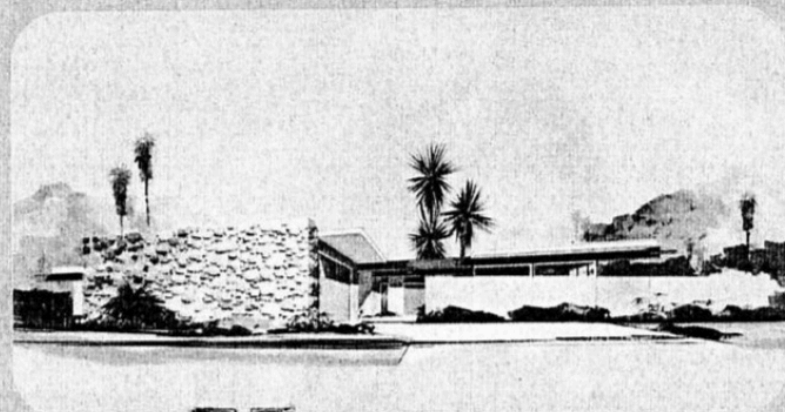
**THREE BEDROOM HOME EXTERIORS (continued) TO SUIT DISCERNING TASTES**



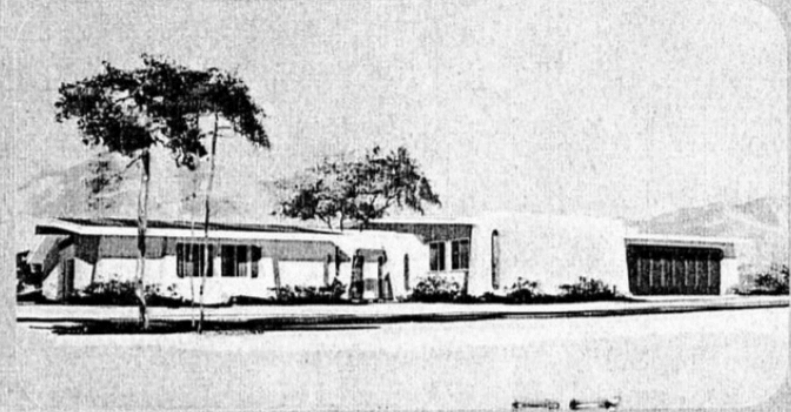
GLENEAGLES ELEVATION C



ST. CLOUD ELEVATION D



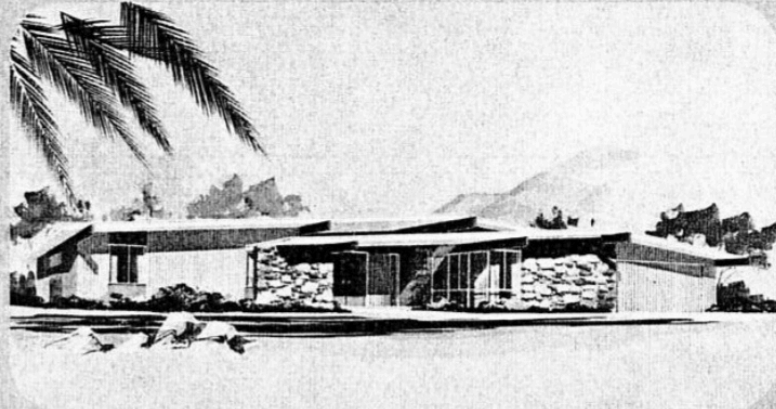
MARACAIBO ELEVATION E



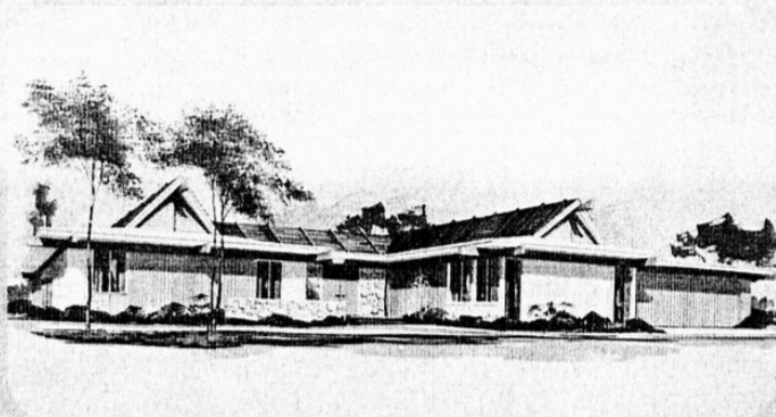
CAPILANO ELEVATION F



WENTWORTH ELEVATION G



ROYAL MELBOURNE ELEVATION H

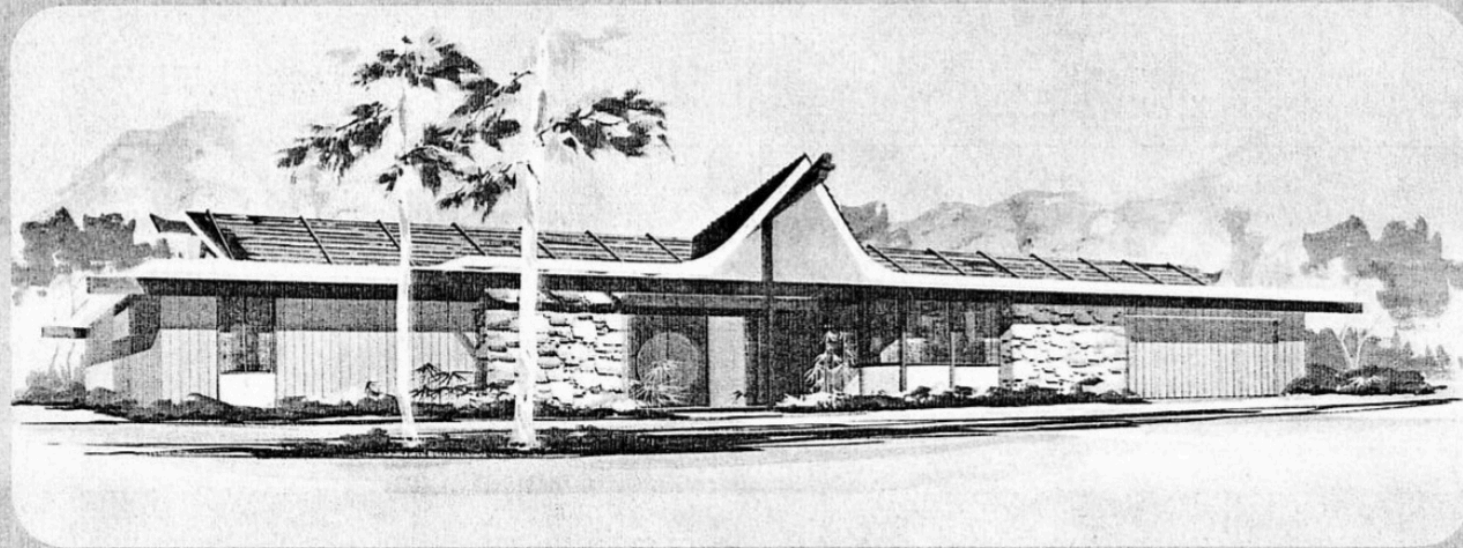


BELHI ELEVATION I

Quality throughout! Interior construction includes lath and plaster (not drywall); fully insulated exterior walls and ceilings; hardwood kitchen and bathroom cabinets; cultured marble pullmans; Roman tubs and scores of custom details.

**MAGNIFICENT FOUR-BEDROOM MODEL ALSO AVAILABLE AT GREEN FAIRWAY ESTATES**

*The ultimate in luxurious living in the sun. Located on prime lots right on the Fairway.*



ROYAL SINGAPORE ELEVATION J



PLAN 2

Add more spaciousness to all of the other advantages at Green Fairway Estates and you will want to select Royal Singapore, with four large bedrooms, three baths, extra roomy garage. Live *big* in Palm Springs.

# Green Fairway Estates

is more than just a place to live—it is a place where you live more. Depending on your mood of the moment, you can be an active golfer,



a leisurely sun-worshipper, an eager shopper, a proud host or hostess. You can be sure your Green Fairway Estates home is the ideal focal point for a life worth living. *And You Can Be Sure Of The Quality and Value of Your Home at Green Fairway Estates*

First of all, you own the house and the land when you buy your home at Green Fairway Estates. You are not just a leasee—it's all yours. When values increase these, too, are yours. Every inch of every home speaks quality, with no compromise. Here are some examples:

Built-in ranges and ovens by Gaffers & Sattler featuring Center-Simmer burners and Time Of Day Clocks + Engineered Payne Heating and Refrigerated Air Conditioning + Wall-to-wall carpeting of Dupont Nylon with heavy-duty rubber padding + Dishwashers by Frigidaire + Gaffers & Sattler disposals + cultured marble Pullmans + Raised Plank Deck Areas in some models + custom-gas-equipped fireplaces + oversize garages to house electric golf carts + concrete driveways + split cedar enclosures + all utilities underground.

### Ask about the 41 additional custom features



*Title Policies to be issued through First American Title Co. of Riverside, 3626-14th St., Riverside, California.*

*Green Fairway Estates is in the city of Palm Springs with Police, Fire, Hospital and all other municipal services at your command. Palm Springs enjoys a very fine police department which extends special patrol and protective service to property owners in all seasons.*



**Balanced  
Power  
Homes**

**ALEXANDER CONSTRUCTION CO.**



QUALITY HOME BUILDING SINCE 1925



ROBERT ALEXANDER



GEORGE ALEXANDER

## HERB LAKEY

SALES DIRECTOR

*For almost 40 years, the Alexander Construction Company has made quality the key to every home it has built. This policy has resulted in complete satisfaction for thousands of home-buyers in Palm Springs and elsewhere. One out of three permanent home owners in the city of Palm Springs bought an Alexander-built home! These records of achievement and progress are signals of constantly increasing know-how—and all of the experience and knowledge have been focused upon Green Fairway Estates. This is your assurance of real value in the home you buy. At the attractive prices—and the quality construction and appointments—there is no equal to the golf course locale and type of home available at Green Fairway Estates.*

## ALEXANDER CONSTRUCTION COMPANY

63-890 SAN RAFAEL DRIVE, PALM SPRINGS, CALIFORNIA

TELEPHONE GREEN FAIRWAY ESTATES AT (714) 328-1518



HERB LAKEY  
SALES DIRECTOR



