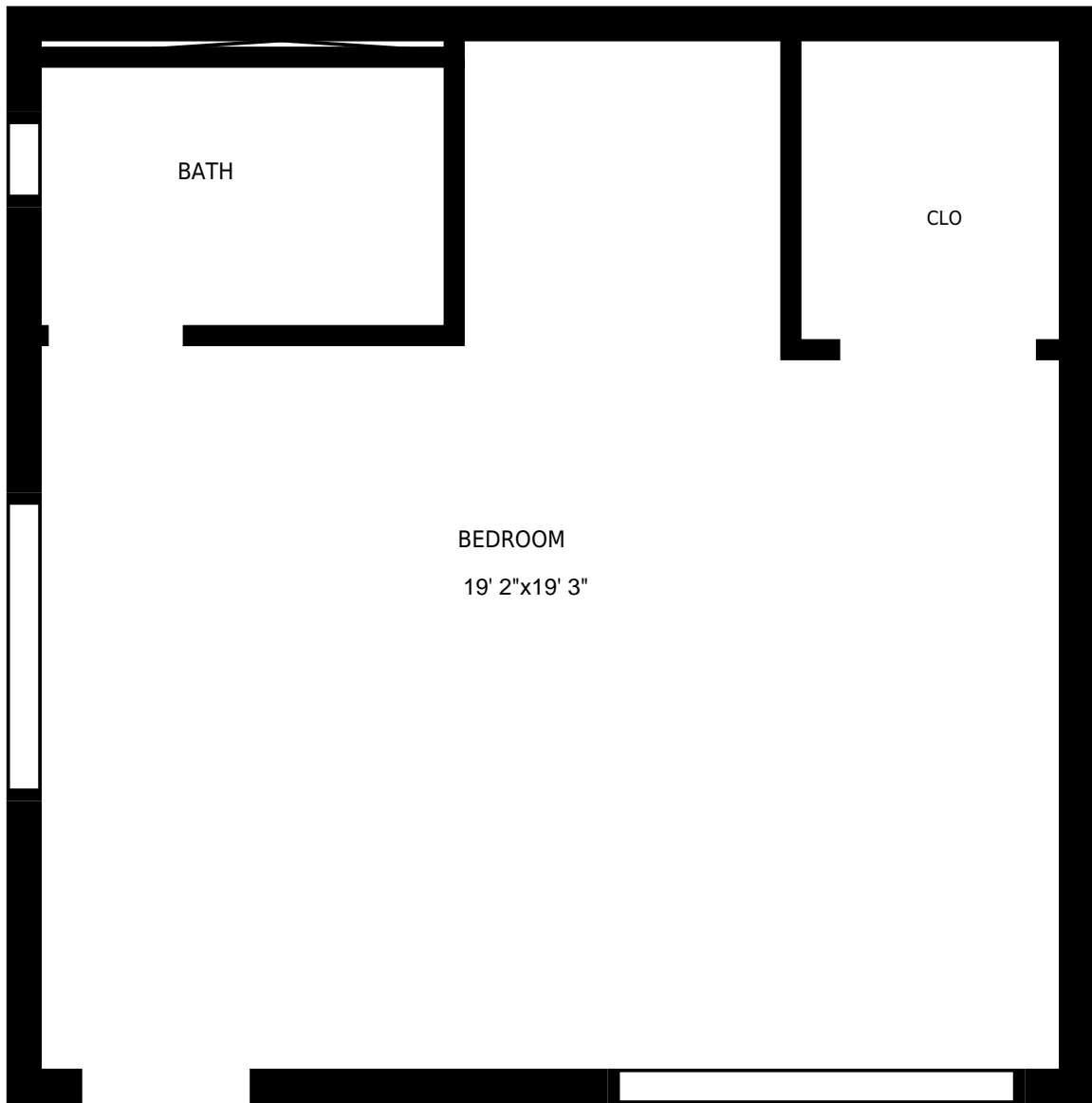
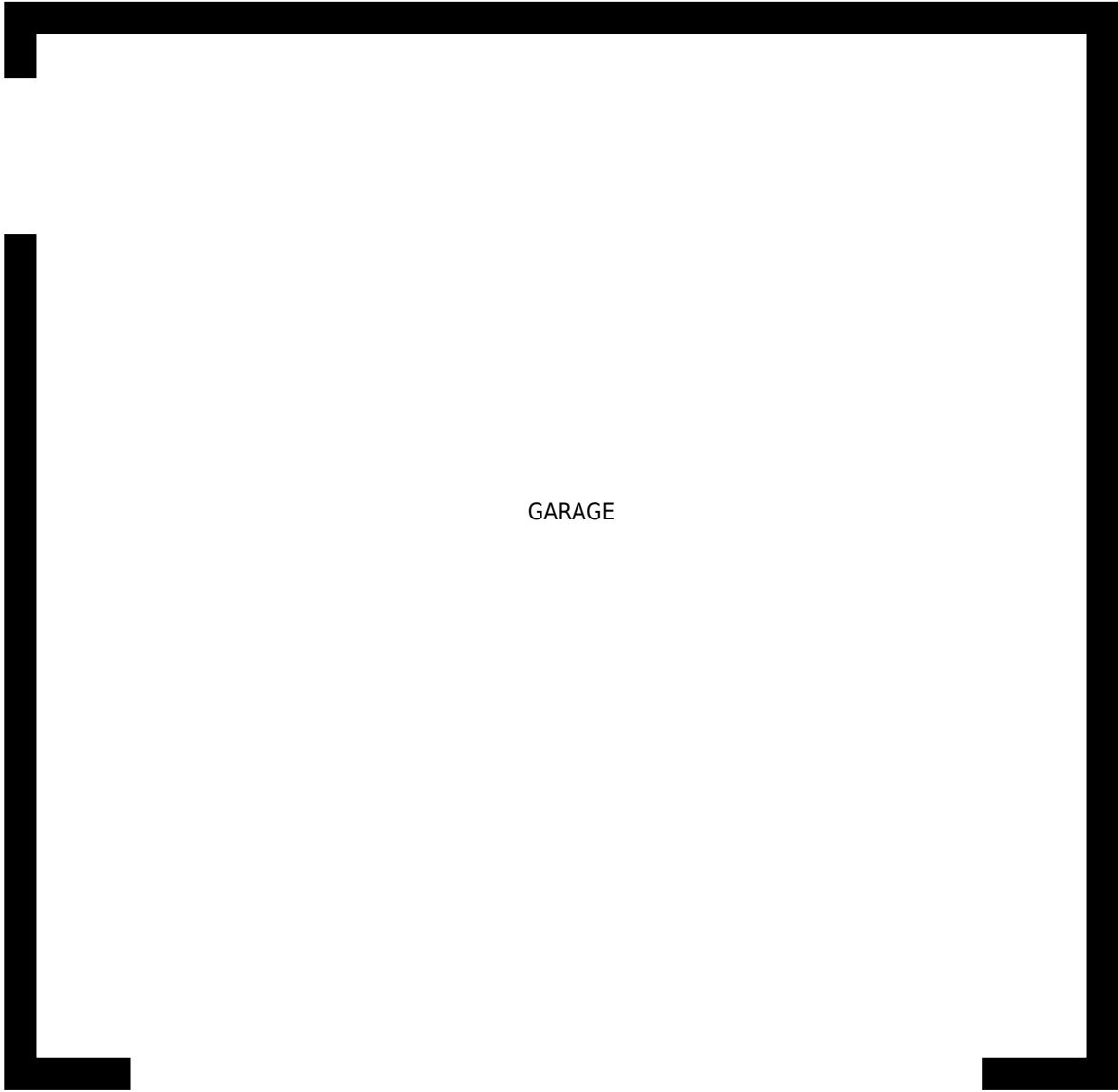


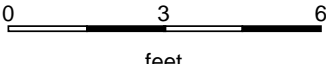
26848 Fond Du Lac Rd, Rancho Palos Verdes, CA		PREPARED FOR:
Main floor		
Usable Floor Area (UFA):	2000 sq. ft	PREPARED ON:
Gross Floor Area (GFA):	2120 sq. ft	Mar, 2016
All rooms dimensions and floor areas must be considered approximate and are subject to independent verification. For method of measurement please see <a href="http://youriguide.com/measure/">http://youriguide.com/measure/</a> .		



26848 Fond Du Lac Rd, Rancho Palos Verdes, CA Guest house		PREPARED FOR:
Usable Floor Area (UFA):	370 sq. ft	PREPARED ON:
Gross Floor Area (GFA):	410 sq. ft	Mar, 2016
All rooms dimensions and floor areas must be considered approximate and are subject to independent verification. For method of measurement please see <a href="http://youriguide.com/measure/">http://youriguide.com/measure/</a> .		



GARAGE



26848 Fond Du Lac Rd, Rancho Palos Verdes, CA Garage	PREPARED FOR:
Usable Floor Area (UFA): Gross Floor Area (GFA):	PREPARED ON: Mar, 2016
All rooms dimensions and floor areas must be considered approximate and are subject to independent verification. For method of measurement please see <a href="http://youriguide.com/measure/">http://youriguide.com/measure/</a> .	