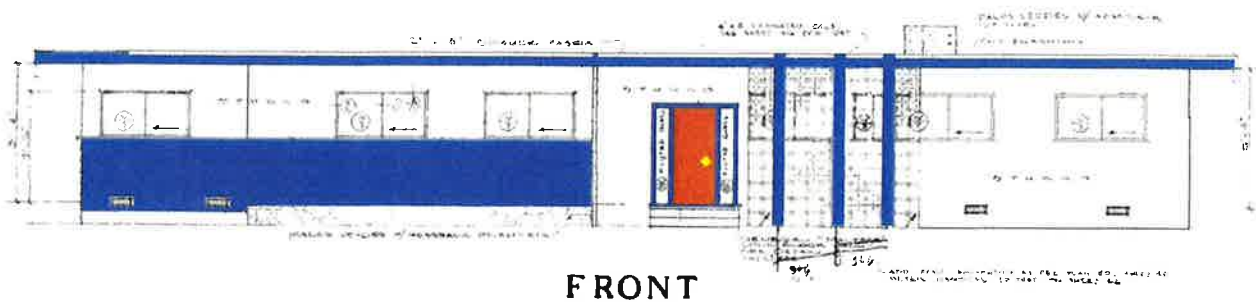


About the Home

32307 Conqueror Drive was built in 1960. Its floorplan, dubbed the *Monte Carlo* in advertising literature, was the largest of the nine floorplans that Paul R. Williams designed for SeaView. At 2059 square feet, the home features a living wing with a spacious kitchen and breakfast nook, foyer, living room, service porch, dining room, and half bath, complemented by a bedroom wing boasting four bedrooms and two full baths.

32307 Conqueror represents the mid-century modern genre of architecture, with features like a flat roof, horizontal bevel siding, minimal window frames, a locally-quarried Palos Verdes stone planter, and an eleven-foot exterior wall of "Maltese" pattern concrete screen block distinguishing its well-preserved 1960 facade.



32307 Conqueror was built with many unusual features that Williams often implemented in his custom homes of the era. The living wing of the home echoes Williams' Frank Sinatra Residence; its floor-to-ceiling fireplace, faced with a unique combination of mossback flagstone and Palos Verdes stone, juts off the wall at a bold angle, concealing a "disappearing wall" of Japanese-inspired *shōji* screens that divide the living room from the dining room if desired. Nine-foot-three ceilings (a luxury option in 1960) increase the sense of spaciousness.

The kitchen features newly refinished original countertops and cabinets, as well as a 1959 O'Keefe and Merritt double wall oven and countertop range in Cocoa Brown.

All bathrooms feature original countertops and cabinetry, and the center bath features all-original American Standard plumbing fixtures in peach, outfitted with new mechanical parts and plumbing to ensure seamless operation. Marmoleum floor tiles were custom-cut to recreate Williams' original pattern.

In the foyer, a brand-new Montauk black slate entryway has been laid in the original Williams pattern, and the original Panaview sliding glass doors also feature new Montauk black slate thresholds, inspired by Williams designs seen elsewhere in the SeaView subdivision. A latticework room divider, custom-built in 2016 from Williams' original 1959 design, visually separates the foyer from the living room.

32307 Conqueror is unique because it was the only Elevation 6D built with a detached garage, allowing extra light through exclusive windows in the kitchen nook and service

porch. Its north-facing orientation and carefully placed UV-resistant windows in original frames mean that no excess light and heat enter the house during the day.

To preserve the integrity of Williams' original design, 32307 Conqueror has had mostly functional and restorative updates, including new cement subfloors and Marmoleum flooring in full baths, period-accurate ceiling vents in full baths, stone flooring in half bath, linoleum flooring in kitchen and service porch, carpeting, paint, and updated plumbing, all in the last two years.

Ownership History

32307 Conqueror Dr was purchased new in 1960 by Russell Ruhl McBride (1919-2007), a marketing executive for Itek Corporation, and his wife Josephine "Jo" Burriss McBride (1913-1964). The home was sold in the late 1960s to Harold Pluenneke (1930-) and Eugenia Pluenneke (1932-2014), who lived in and leased it for decades before selling it to Mark and Julia Morgan in 2005.

