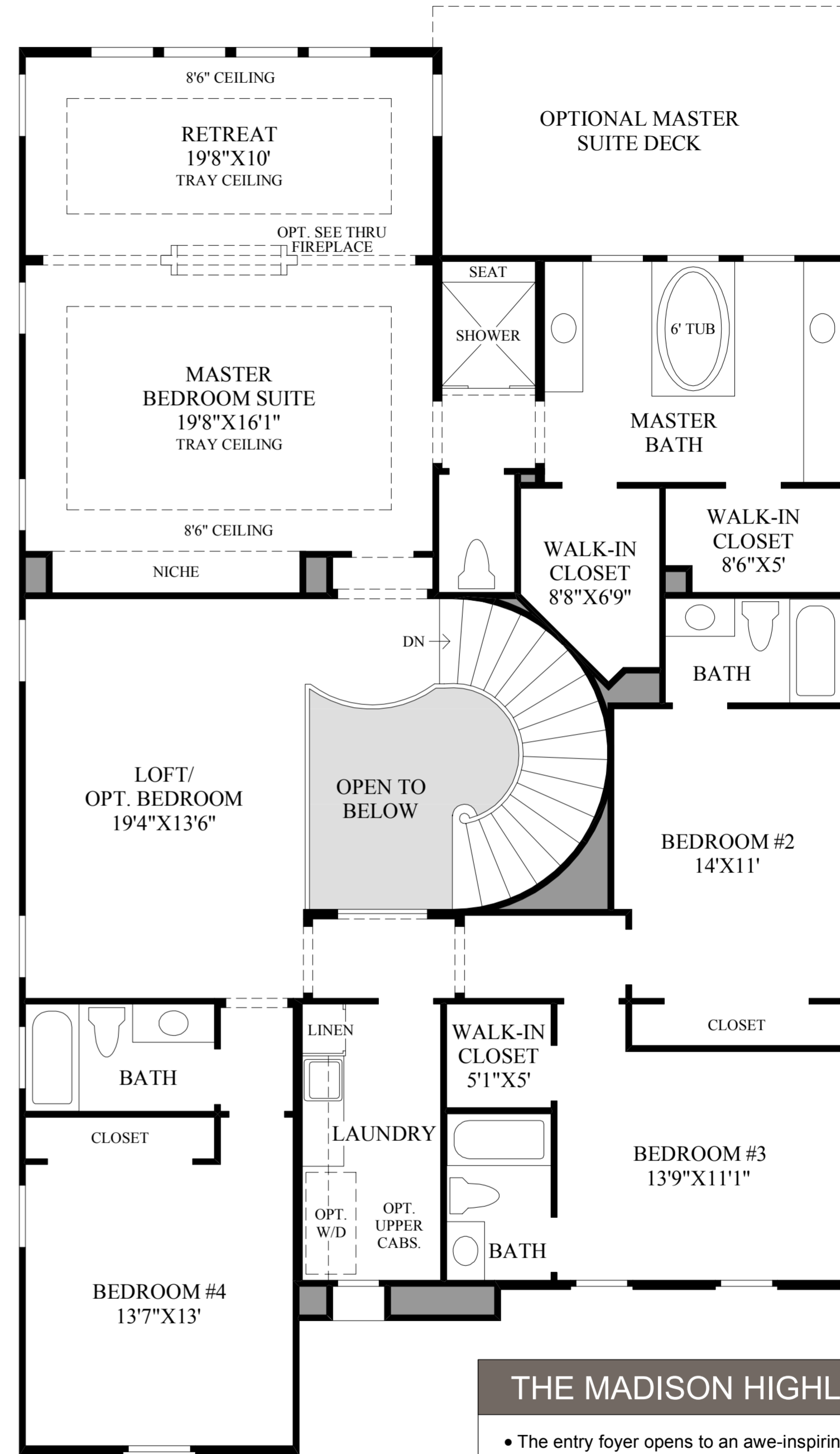


SPANISH COLONIAL EXTERIOR DESIGN INCLUDES LARGER COVERED ENTRY.

First Floor

TUSCAN EXTERIOR DESIGN SHOWN



SPANISH COLONIAL AND ITALIANATE EXTERIOR DESIGNS INCLUDE BALCONY.

Second Floor

THE MADISON HIGHLIGHTS

- The entry foyer opens to an awe-inspiring double-volume space that is highlighted by a grand curved staircase and a picturesque overlook balcony.
- The spectacular kitchen boasts a walk-in pantry, a large center island with a built-in breakfast bar, an adjoining breakfast nook, and discreet access to the sunlit dining room which flaunts a desirable furniture niche.
- The enormous great room brings the outdoors inside with a stately wall of windows and sliding glass doors to the rear yard.
- The luxurious master bedroom suite is complemented by a relaxing retreat area and a lavish master bath that includes dual vanities, a private water closet, a spacious shower with a seat, a large soaking tub, as well as separate walk-in closets.
- An appealing first-floor bedroom, an impressive loft, and a conveniently located laundry complete this beautiful home.