

# MARRAKESH MEMBERSHIPS

## FULL MEMBERSHIP

Required with the purchase of a Marrakesh home.

### Monthly Dues & Fees

|  |                         |
|--|-------------------------|
| <i>Membership Affiliation One Time Fee</i>               | <i>\$40,000</i>         |
| Homeowners Fee   | \$945.00                |
| MCC Reserve Fund   | \$50.00                 |
| MCA Reserve Fund   | \$145.00                |
| Clubhouse Renovation Assessment: Through March 2036      | \$195.15                |
| Additional Renovation Assessment: Through September 2037 | \$45.60                 |
| Social Monthly Dues                                      | \$720.00                |
| Annual Golf Dues   \$2,700.00                            | <hr/>                   |
| <i>Homeowners Insurance: Included</i>                    | <i>Total \$2,100.75</i> |
| <i>Annual Cart Trail Fee \$600   2nd Cart \$400</i>      |                         |

Land Encumbrance to Marrakesh Leasehold Partnership:

Paid separately from Marrakesh dues. 100% is paid to MLP and 40% is credited back on monthly statement. Estimated charge \$260 - \$335.

## NON-RESIDENT FULL MEMBERSHIP

Available to those who do not own a residence at Marrakesh.

### Monthly Dues & Fees

|  |                 |
|--|-----------------|
| <i>Membership Affiliation One Time Fee</i>                     | <i>\$40,000</i> |
| Capital Contribution Monthly Fee                               |                 |
| Dues   \$11,340.00 Billed Annually                             |                 |
| <i>Additional Annual Cart Trail Fee \$600   2nd Cart \$400</i> |                 |

## SEASONAL GOLF MEMBERSHIP

Available to those leasing from a Golf/Full Residence at Marrakesh.

**Monthly Dues** \$1,800.00

*Includes \$600 Golf Cart Trail Fee*

|                   | <i>9-Holes</i> | <i>18-Holes</i> |
|-------------------|----------------|-----------------|
| Accompanied Guest | \$55.00        | \$75.00         |

## SEASONAL SOCIAL MEMBERSHIP

Available to those leasing from a Social/Golf/Full Residence at Marrakesh.

**Monthly Dues** \$500.00

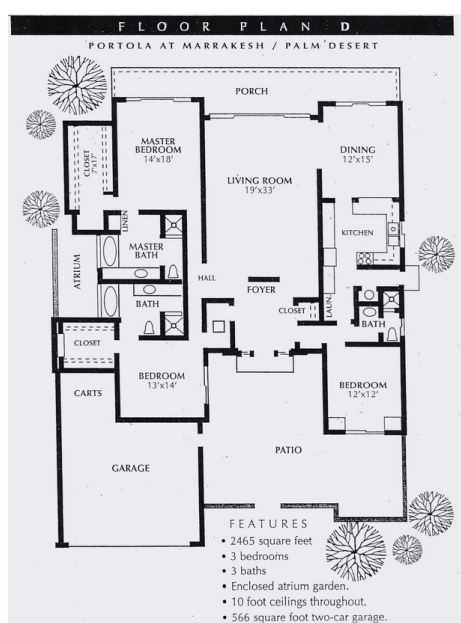
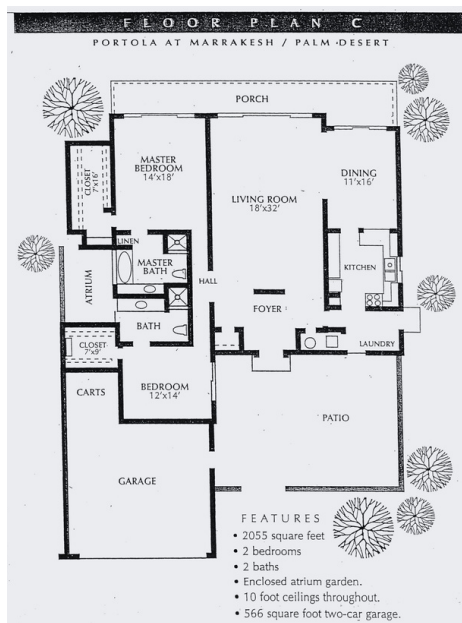
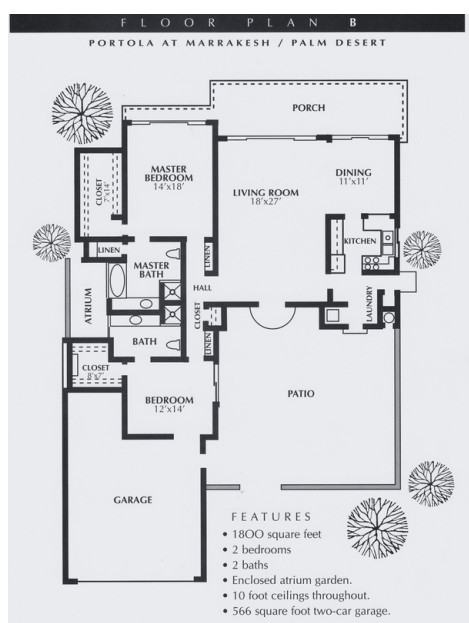
# GREEN FEES

Guest privileges are extended to the guests of Full Members.

|                            | 9-Holes | 18-Holes |
|----------------------------|---------|----------|
| Immediate Family Guest     | \$35.00 | \$55.00  |
| Accompanied Guest          | \$55.00 | \$75.00  |
| Unaccompanied / Reciprocal | \$75.00 | \$95.00  |

# OPTIONAL ANNUAL GOLF PROGRAM DUES

|                    |          |
|--------------------|----------|
| Men's Golf Club    | \$75.00  |
| Ladies Golf Club   | \$125.00 |
| Ladies Putter Club | \$90.00  |



47000 MARRAKESH DRIVE | PALM DESERT, CA 92260  
MARRAKESHCOUNTRYCLUB.COM

