

City of Hesperia
Tax Rate Area
20023,20018,20010

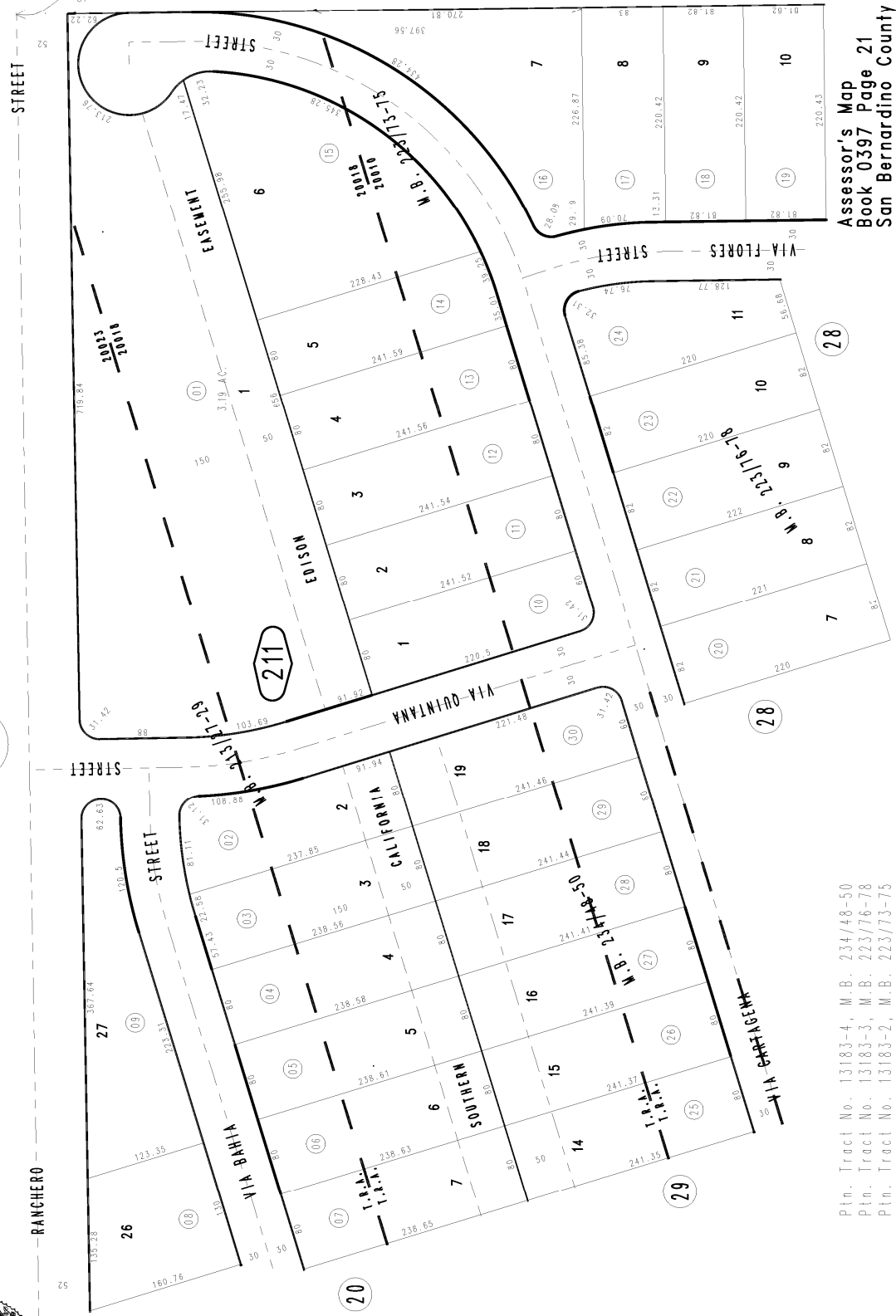
Ptn. Tract No. 13183-1, M.B. 213/27-29

0397 - 21

THIS MAP IS FOR THE PURPOSE
OF AD VALOREM TAXATION ONLY.



0412
18



REVISED

Assessor's Map
Book 0397 Page 21
San Bernardino County

Ptn. Tract No. 13183-4, M.B. 234/48-50
Ptn. Tract No. 13183-3, M.B. 223/76-78
Ptn. Tract No. 13183-2, M.B. 223/73-75

March 2004