

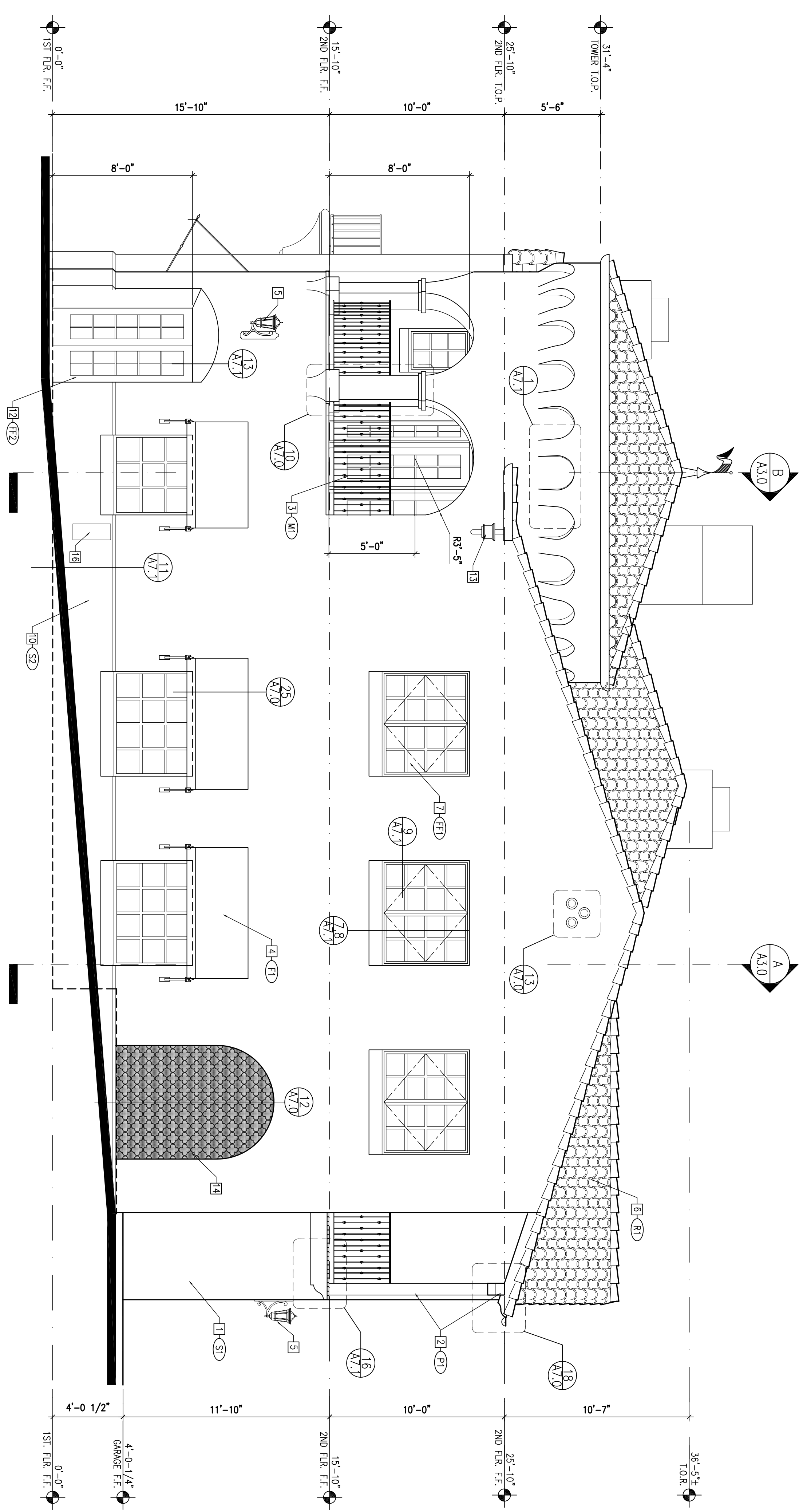
KEYNOTES

- 3 COAT MISSION ROLL PLASTER FINISH
- STAINED WOOD BEAMS AND POSTS
- 42" HIGH WROUGHT IRON GUARDRAIL, SEE DTL. 2/A7.0
- NEW FABRIC AMING WITH STEEL SPEAR ENDED HARDWARE AND 4" VALANCE, SEE DTL. 25/A7.0
- EXTERIOR LIGHT FIXTURE, SEE ELECTRICAL PLANS FOR ADDITIONAL INFORMATION.
- 2 PIECE / S-TILE BLEND CLAY TILE ROOF
- ALUMINIUM WINDOWS, 1225 SERIES BY ARCADIA CUSTOM.
- DECORATIVE WROUGHT IRON GRILL
- METAL CHIMNEY SHROUD, SEE DTL. 2/A7.1
- BUILDING BASE IN MISSION ROLL PLASTER FINISH, SEE DTL. 11/A7.1
- STONE SURROUND AT ENTRY, SEE DTL. 11/A7.0
- FIBERGLASS FRM WOODGRAIN 10 LITE FRENCH DOOR IN WALNUT STAIN FINISH
- DOWNSPOUT TO LEADERBOX, SEE DTL. 14.15/A7.0
- WROUGHT-IRON SPHERE, SEE DTL. 12/A7.0
- ADDRESS NUMBER LOCATION, NUMBERS SHALL BE A MINIMUM OF 4" IN HEIGHT, HAVE A STROKE OF AT LEAST 1/2" IN WIDTH AND SHALL BE SET IN AN APPROVED MANNER. SEE THE DEPARTMENT NOTES SHEET A4.00
- IN WALL FLAGPOLE FILTER MODEL #FG-054, FLUSH MOUNT AND PAINT TO MATCH BUILDING EXTERIOR COLOR.

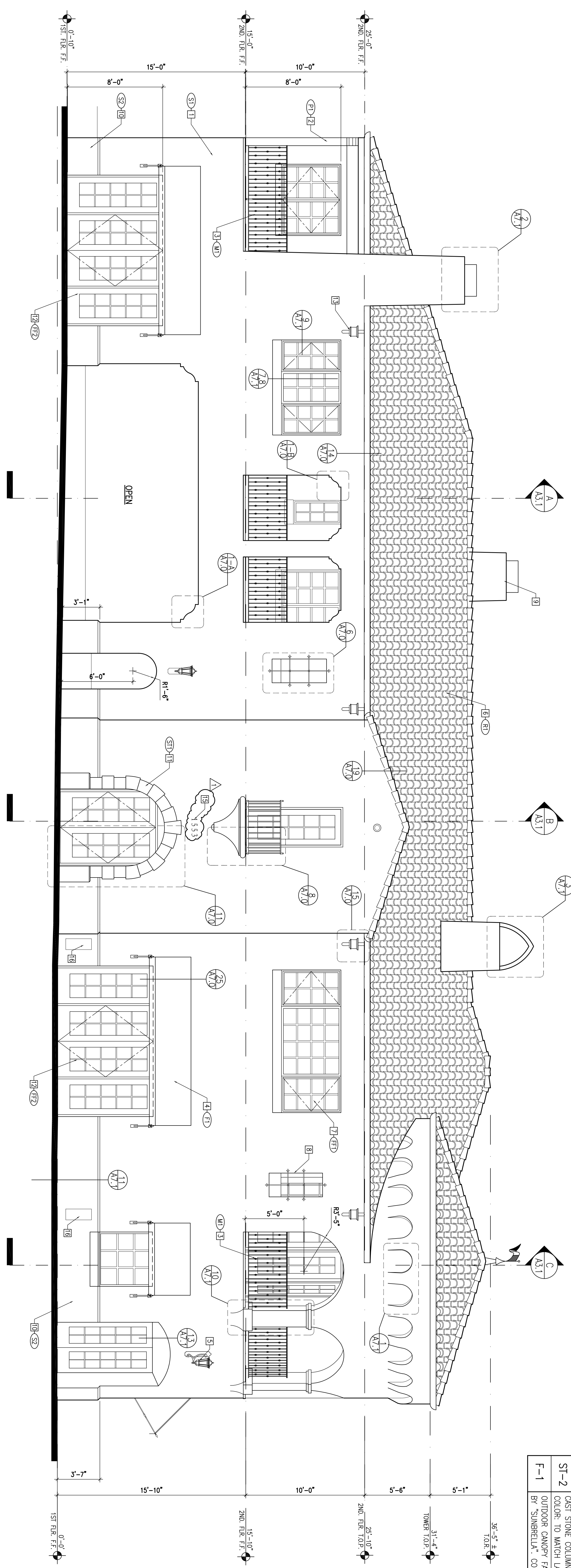
FINISH SCHEDULE

NO	DESCRIPTION
S-1	STUCCO, TEXTURE: MISSION ROLL 1/4 HERRA* COLOR: EGGSHELL
S-2	STUCCO, TEXTURE: MISSION ROLL 1/4 HERRA* COLOR: SADDLEBACK
P-1	PAINT: SEMI-TRANSPARENT EXTERIOR STAIN BY SUPER-DECK*, COLOR: MISSION BROWN
R-1	2 PIECE CLAY TILE ROOF / S-TILE BLEND BY U.S. TILE, COLOR "STANDARD" RED
FF1	ALUMINIUM WINDOWS, FACTORY FINISH BY ARCADIA CUSTOM 1225, IN ANNOYZED "DARK BRONZE" BY "OLGAPAN", ULTRA-GRAIN CLASSIC WALNUT FINISH
FF2	SPAND FIBERGLASS FRENCH DOORS BY "JELD-WEN FRM WOODGRAIN, STAIN COLOR: WALNUT
M-1	WROUGHT IRON GUARDRAIL, OIL RUBBED FINISH
ST-1	STONE SURROUND AT ENTRY BY OMAHA STONE FIASSTONE
ST-2	CAST STONE COLUMN CAPS COLOR: TO MATCH LA HABRA COLOR "SADDLEBACK" BY "SINIBRELLA", COLOR: MARINE BLUE
F-1	

A EAST ELEVATION
SCALE: 1/4" = 1'-0"



B SOUTH ELEVATION
SCALE: 1/4" = 1'-0"



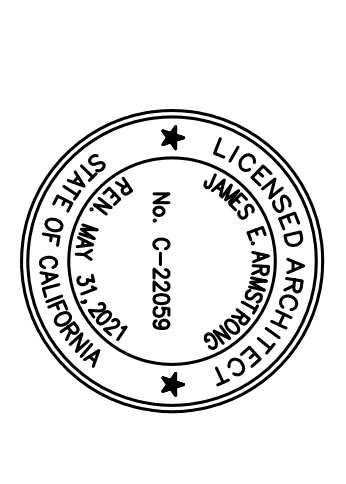
PROJECT TITLE:
MAIN & ENGINAL MIXED USE
FOR
RAMCAM GROUP
1553 MAIN ST
VENICE, CA
90003

SHEET TITLE:
ELEVATIONS

REVISIONS:
02/19 P.C. REV'S

OWNERSHIP OF DOCUMENTS:
THIS DRAWING AND THE DATA AND DOCUMENTS REPRESENTED THEREON ARE THE PROPERTY OF J.E.A. ARCHITECTS AND SHALL REMAIN THE PROPERTY OF J.E.A. ARCHITECTS WHETHER OR NOT THIS DRAWING IS USED IN WHOLE OR IN PART FOR ANY PROJECT. NO PART OF THIS DRAWING IS TO BE REPRODUCED OR TRANSMITTED IN ANY FORM OR BY ANY MEANS, ELECTRONIC OR MECHANICAL, INCLUDING PHOTOCOPYING, RECORDING, OR BY ANY INFORMATION STORAGE AND RETRIEVAL SYSTEM, WITHOUT THE WRITTEN PERMISSION OF J.E.A. ARCHITECTS. PROJECT # 1764, ARCHITECT J.E.A.

DATE: 11-19-2018
FILENAME: 1764_A040
R/S PROJECT #: 1764
DRAWN BY: JEA
CONSULTANT'S #: N/A
REVIEWED BY: JEA



JAMES E. ARMSTRONG
ARCHITECT, AIA
LICENSE C22099
2300 KNOLL DRIVE, SUITE A
VENTURA, CA 93003
805-644-8180