

Murrieta Zoning Map

Adopted: June 17, 2014
Effective: July 17, 2014

ZONING LEGEND

RESIDENTIAL

- RURAL RESIDENTIAL (RR)
- SINGLE-FAMILY RESIDENTIAL (SF 1)
- SINGLE-FAMILY RESIDENTIAL (SF 2)
- SINGLE-FAMILY RESIDENTIAL (SF 3)
- SINGLE-FAMILY RESIDENTIAL (SF 4)
- SINGLE-FAMILY RESIDENTIAL (SF 5)
- SINGLE-FAMILY RESIDENTIAL (SF 6)
- SINGLE-FAMILY RESIDENTIAL (SF 7)
- SINGLE-FAMILY RESIDENTIAL (SF 8)
- SINGLE-FAMILY RESIDENTIAL (SF 9)
- SINGLE-FAMILY RESIDENTIAL (SF 10)
- SINGLE-FAMILY RESIDENTIAL (SF 11)
- SINGLE-FAMILY RESIDENTIAL (SF 12)
- SINGLE-FAMILY RESIDENTIAL (SF 13)
- SINGLE-FAMILY RESIDENTIAL (SF 14)
- SINGLE-FAMILY RESIDENTIAL (SF 15)
- SINGLE-FAMILY RESIDENTIAL (SF 16)
- SINGLE-FAMILY RESIDENTIAL (SF 17)
- SINGLE-FAMILY RESIDENTIAL (SF 18)
- SINGLE-FAMILY RESIDENTIAL (SF 19)
- SINGLE-FAMILY RESIDENTIAL (SF 20)
- SINGLE-FAMILY RESIDENTIAL (SF 21)
- SINGLE-FAMILY RESIDENTIAL (SF 22)
- SINGLE-FAMILY RESIDENTIAL (SF 23)
- SINGLE-FAMILY RESIDENTIAL (SF 24)
- SINGLE-FAMILY RESIDENTIAL (SF 25)
- SINGLE-FAMILY RESIDENTIAL (SF 26)
- SINGLE-FAMILY RESIDENTIAL (SF 27)
- SINGLE-FAMILY RESIDENTIAL (SF 28)
- SINGLE-FAMILY RESIDENTIAL (SF 29)
- SINGLE-FAMILY RESIDENTIAL (SF 30)
- SINGLE-FAMILY RESIDENTIAL (SF 31)
- SINGLE-FAMILY RESIDENTIAL (SF 32)
- SINGLE-FAMILY RESIDENTIAL (SF 33)
- SINGLE-FAMILY RESIDENTIAL (SF 34)
- SINGLE-FAMILY RESIDENTIAL (SF 35)
- SINGLE-FAMILY RESIDENTIAL (SF 36)
- SINGLE-FAMILY RESIDENTIAL (SF 37)
- SINGLE-FAMILY RESIDENTIAL (SF 38)
- SINGLE-FAMILY RESIDENTIAL (SF 39)
- SINGLE-FAMILY RESIDENTIAL (SF 40)
- SINGLE-FAMILY RESIDENTIAL (SF 41)
- SINGLE-FAMILY RESIDENTIAL (SF 42)
- SINGLE-FAMILY RESIDENTIAL (SF 43)
- SINGLE-FAMILY RESIDENTIAL (SF 44)
- SINGLE-FAMILY RESIDENTIAL (SF 45)
- SINGLE-FAMILY RESIDENTIAL (SF 46)
- SINGLE-FAMILY RESIDENTIAL (SF 47)
- SINGLE-FAMILY RESIDENTIAL (SF 48)
- SINGLE-FAMILY RESIDENTIAL (SF 49)
- SINGLE-FAMILY RESIDENTIAL (SF 50)

COMMERCIAL

- NEIGHBORHOOD COMMERCIAL (NC)
- COMMUNITY COMMERCIAL (CC)
- REGIONAL COMMERCIAL (RC)

OFFICE

- OFFICE (O)
- OFFICE & RESEARCH (OR)

BUSINESS PARKS

- BUSINESS PARK (BP)

INDUSTRIAL

- GENERAL INDUSTRIAL (GI)
- GENERAL INDUSTRIAL & HIGH (GIH)

INSTITUTIONAL

- INSTITUTIONAL (I)

PARKS AND OPEN SPACE

- PARKS & RECREATION (P&R)
- OPEN SPACE (OS)

ADDITIONAL FEATURES LEGEND

- Specific Plan Boundary
- City Limits
- Sphere of Influence Boundary
- Chunks
- Transit Oriented Development Overlay

SURROUNDING MUNICIPALITIES

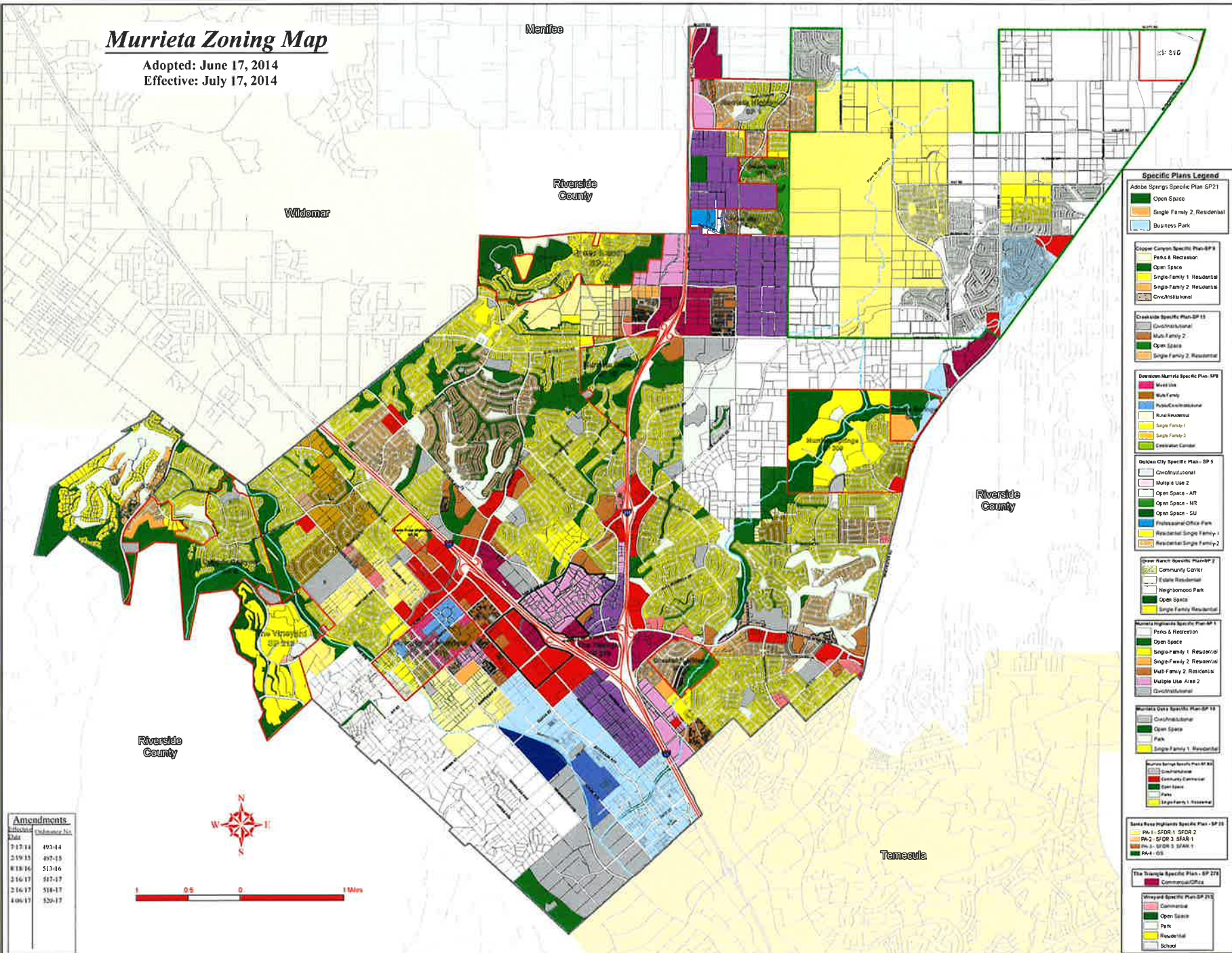
CITYNAME

- Menifee
- Temecula
- Wildomar
- Riverside County

Amendments

Adopted Date	Ordinance No.
7/17/14	493-14
2/19/15	497-15
8/18/16	513-16
2/16/17	517-17
2/16/17	518-17
4/06/17	520-17

This map is a public resource of general information. The reader may consult the map legend for more information regarding zoning and other information available at the local level of jurisdiction. In the event of a conflict between the zoning information on this map and an adopted City Ordinance or ordinance, the Ordinance or ordinance shall govern. The City of Murrieta and Riverside County neither warrant, represent or guarantee the accuracy or completeness of any information provided herein. The City of Murrieta shall assume no liability for any errors, omissions, or inaccuracies in the information provided and shall not be responsible for any claims, losses or damages resulting from the use of this map.



Specific Plans Legend

Adobe Springs Specific Plan SP21

- Open Space
- Single Family 2, Residential
- Business Park

Copper Canyon Specific Plan SP8

- Parks & Recreation
- Open Space
- Single Family 1 Residential
- Single Family 2 Residential
- Condominium

Crescent Specific Plan SP13

- Condominium
- Multi-Family 2
- Open Space
- Single Family 2 Residential

Downtown Murrieta Specific Plan SP9

- Multi-Family
- Public/Condominium
- Rural Residential
- Single Family 1
- Single Family 2
- Celebration Center

Golden City Specific Plan SP5

- Condominium
- Multiple Use 2
- Open Space - AR
- Open Space - HR
- Open Space - SU
- Professional Office Park
- Residential Single Family 1
- Residential Single Family 2

Green Ranch Specific Plan SP7

- Community Center
- Neighborhood Park
- Neighborhood Park
- Open Space
- Single Family Residential

Harvest Hills Specific Plan SP11

- Parks & Recreation
- Open Space
- Single-Family 1 Residential
- Single-Family 2 Residential
- Multi-Family 2 Residential
- Multiple Use Area 2
- Condominium

Murrieta Oaks Specific Plan SP15

- Condominium
- Open Space
- Park
- Single Family 1 Residential

Norwalk Specific Plan SP16

- Condominium
- Community Commercial
- Open Space
- Park
- Single Family 1 Residential

San Marcos Highlands Specific Plan SP18

- PA-1 - SFDR 1 SFDR 2
- PA-2 - SFDR 3 SFDR 4
- PA-3 - SFDR 5 SFDR 6
- PA-4 - OS

Tekoma Specific Plan SP23

- Commercial/Office

Valley Specific Plan SP25

- Community
- Open Space
- Park
- Residential
- School