

# REED TEAM

A Trusted Name in Real Estate

## Showing Supplements Courtesy of The Reed Team

### How to Access the Home:



1. Enter the subterranean car park and park in any bays numbered 1- 6.
2. Locate the Supra on the black fence next to the Visitors Entrance
3. Connect to the Supra and enter the CBS code when prompted
4. Use the fob key to open the Visitors Entrance door
5. Take the elevator up to Level 2
6. Turn left out of the elevator and walk down the corridor to Unit 204
7. Use the key to open the front door.
8. Remember to leave the home as you found it, lock up carefully and return the key to the Supra.
9. Thank you for showing!

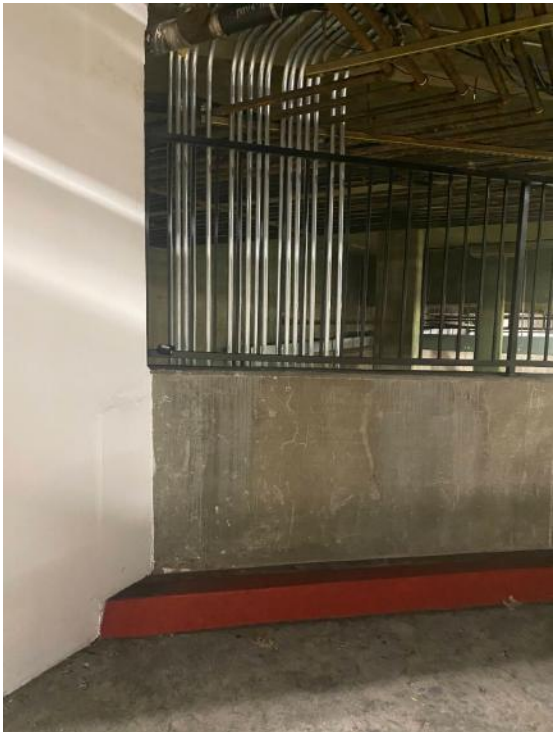


A Trusted Name in Real Estate

**Visitors Elevator is located in the subterranean car park (prior to the internal gate)**



**The Supra is located next to the Visitors Elevator.** Use the FOB key to open the door





A Trusted Name in Real Estate

**The Storage Unit** (#11) is on Level P2



**Car Parking Spaces** assigned to the Unit are **Number 56 and 57** on Level P2

**Excluded from the Sale**

Dining Room Chandelier



**Beach Access and Exterior Shower**

