

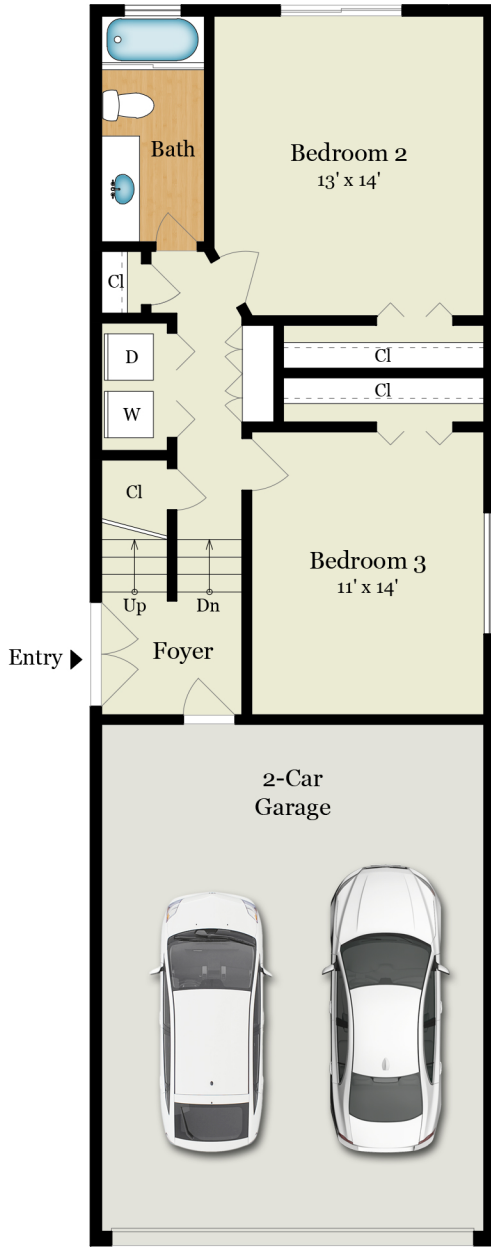
**Estimated Total Finished
Square Footage: 1,800 SQ FT**

Above-Grade: 1,800 SQ FT Below-Grade: N/A
Plus 480 SQ FT Garage on First Floor
Calculated per ANSI Standard Z765-2003.

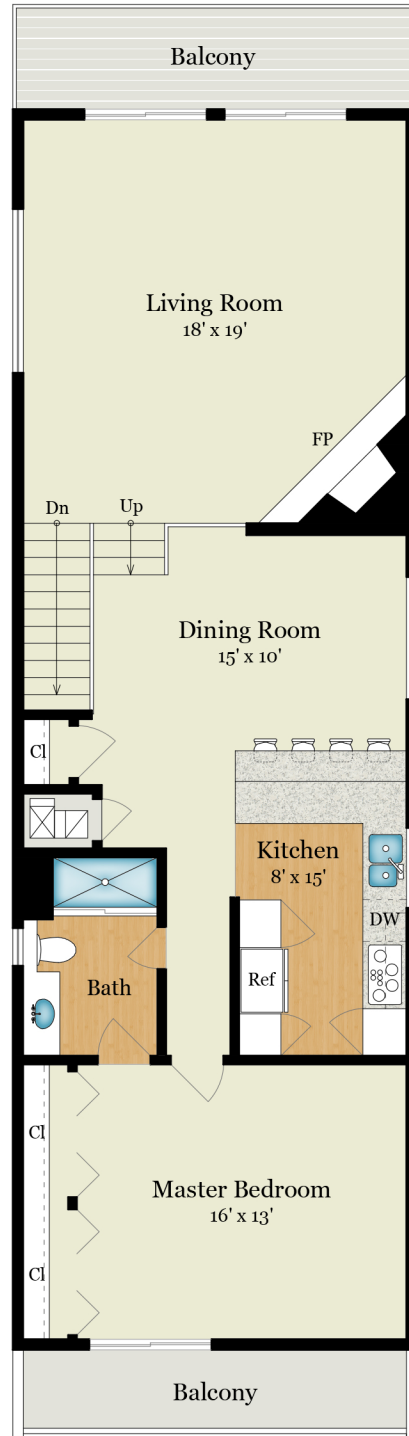
1610 CARVER STREET

REDONDO BEACH, CA 90278

* Estimated Total Finished & Unfinished
Square Footage: 2,280 SQ FT



FIRST FLOOR
660 SQ FT



SECOND FLOOR
1,140 SQ FT



Rendering by Floor Plan Visuals.
All measurements are approximate. While deemed reliable, no information
on these floor plans should be relied upon without independent verification.



Presented by Melissa Pilon, The Hoffman Murphy Team
Tel: 310.939.9393
Email: info@hoffmanmurphy.com