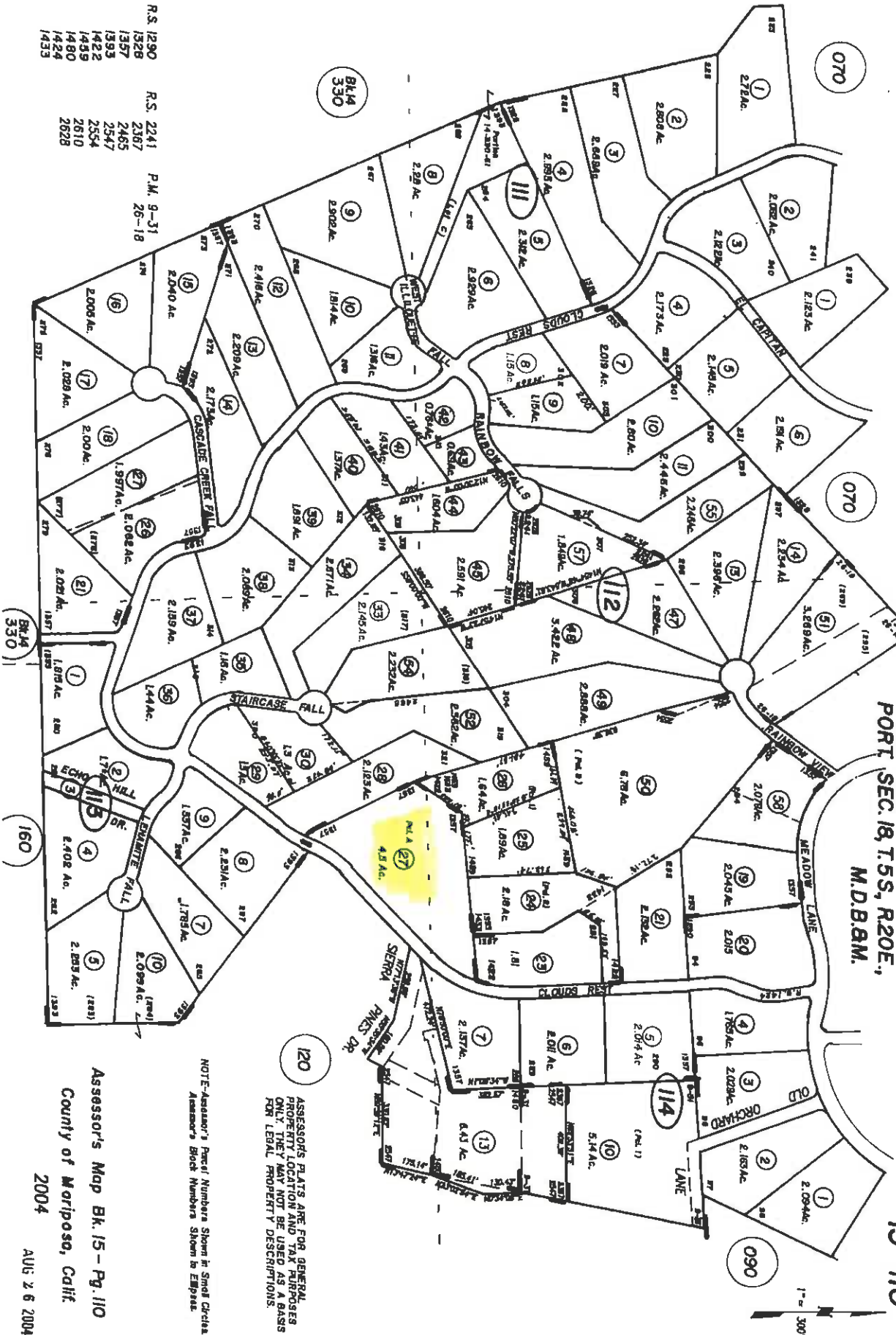


PORT. LUSHMEADOWS MOUNTAIN ESTATES, UNITS 2, 3, 4

PORT SEC. 18, T. 5S, R. 20E., M.D.B.M.

Tax Area Code
S1000

15-110



| R.S. | 2290 | 2241 | P.M. | 9-31 |
|------|------|-------|------|------|
| 1328 | 2387 | 26-18 | | |
| 1357 | 2465 | | | |
| 1393 | 2547 | | | |
| 1422 | 2554 | | | |
| 1459 | 2610 | | | |
| 1480 | 2628 | | | |
| 1424 | | | | |
| 1433 | | | | |

ASSESSOR'S PLATS ARE FOR GENERAL INFORMATION ONLY. PROPERTY TAXES SHOULD BE PAID TO THE COUNTY OF MARIPOSA. THIS MAP MAY NOT BE USED AS A BASIS FOR LEGAL PROPERTY DESCRIPTIONS.

NOTE: Assessor's Parcel Numbers Shown in Small Circles. Assessor's Block Numbers Shown in Emphasis.

Assessor's Map Bk. 15 - Pg. 110
County of Mariposa, Calif.

2004

AUG 2 6 2004

