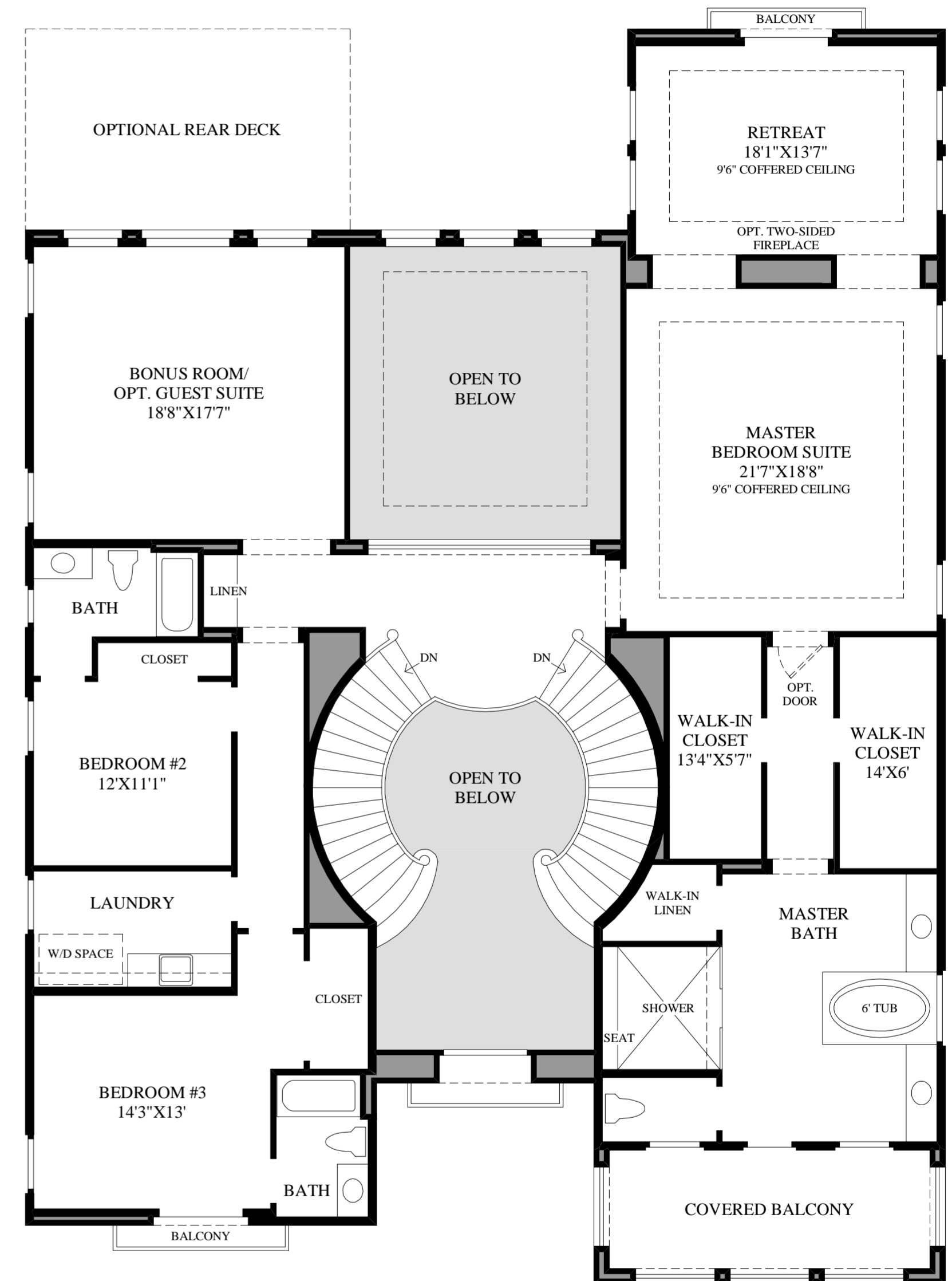


SHOWN WITH OPTIONAL
PREP KITCHEN



COVERED BALCONY ONLY AVAILABLE WITH
TUSCAN AND ANDALUSIAN EXTERIOR DESIGNS.

First Floor
TUSCAN EXTERIOR DESIGN SHOWN

Second Floor

THE SEELEY HIGHLIGHTS

- The two breathtaking curved staircases help to create a visually stunning foyer, which is sure to impress as it reaches a soaring double-volume height that offers a clear line of sight to the wall of sliding glass doors beyond.
- The exquisite formal dining room is enhanced by an elegant two-story coffered ceiling and features an expansive sliding glass door system that leads to the sizable luxury outdoor living space.
- Overlooking the stately dining and great rooms, the well-appointed kitchen has much to offer for the at home chef, including a large center island, plenty of counter space, a walk-in pantry, and an adjoining nook.
- Completing the luxurious master bedroom suite is a secluded retreat, gorgeous coffered ceilings, dual walk-in closets, and a marvelous master bath that includes a 6' soaking tub, a large shower with seat, a private water closet, and access to a private covered balcony.
- Additional highlights include an appealing first-floor bedroom, a versatile office space, private baths for each of the secondary bedrooms, a generous upper-level bonus room, and a cozy fireplace at the luxury outdoor living space.