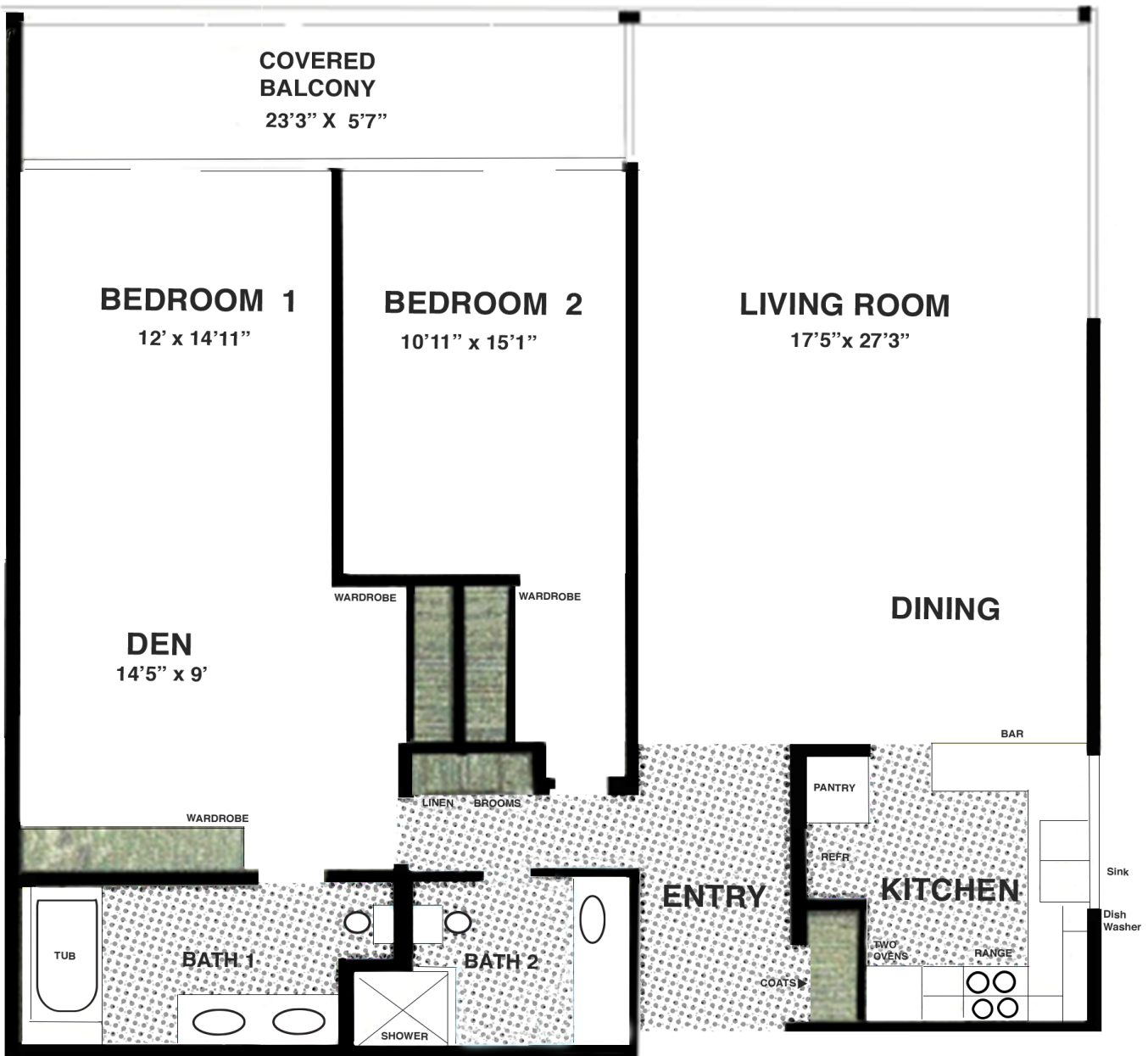


APPROVED FLOORING LAYOUT FOR INDIVIDUAL FLOOR PLANS

The following Argosy "A" layout shows the hard-surface areas that are approved as per the CC&Rs -*5.4(b). **Exception: only first-floor units are permitted to install hard-surface flooring throughout the entire unit.** Regardless of the type of flooring, a short-form application is required.

* In order to ensure better sound attenuation within the condominium building, carpeting and padding are required in all areas of a Unit located above the first floor, with the exception of the entry area, kitchen, hallways, and bath areas, which are permitted to have flooring materials made of other than carpeting. The alternative materials must be underlain with a sound attenuating material that, if installed pursuant to manufacturer's recommendations, will minimize impact noise.



Argosy "A" Floor Plan
 *Dimensions are approximate unless noted otherwise.



Approved hard-surface 