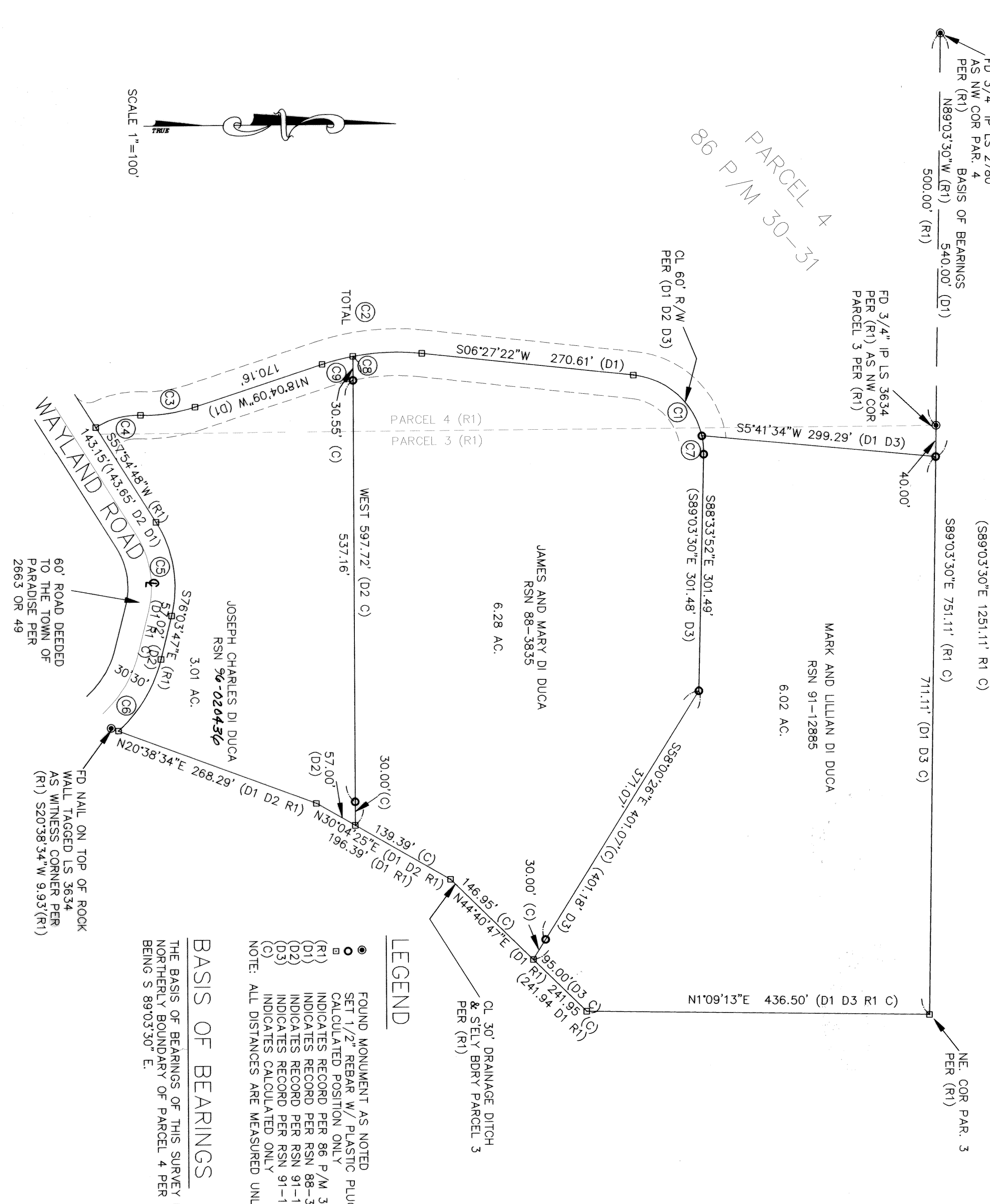


140-17

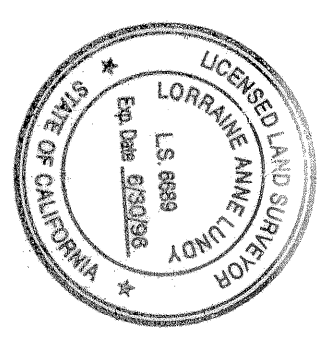
CURVE TABLE

CURVE	RADIUS	LENGTH	DELTA
C1	100.00'	124.59'	71°23'06" (D1)
C2	300.00'	128.41' (128.42' D1)	24°31'31" (D1)
C3	200.00'	70.51'	20°11'54" (D1)
C4	100.00'	59.72' (D1 C)	34°12'57" (D1)
C5	155.00'	124.51'	46°01'25" (D1)
C6	180.00'	107.34'	34°10'02" (D1)
C7	100.00'	23.73'	13°35'40" (13°35'42" D3)
C8	300.00'	87.90'	16°47'16" (C)
C9	300.00'	40.51'	7°44'15" (C) (7°44'13" D2)



SURVEYOR'S STATEMENT

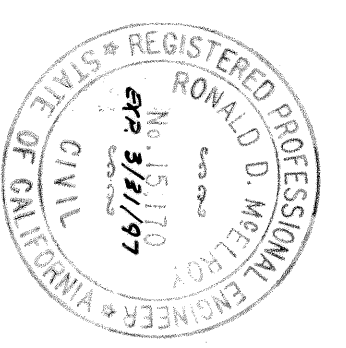
THIS MAP CORRECTLY REPRESENTS A SURVEY MADE BY ME OR UNDER MY DIRECTION IN CONFORMANCE WITH THE REQUIREMENTS OF THE LAND SURVEYOR'S ACT AT THE REQUEST OF MARY DI DUCA DURING MARCH, 1996.



Lorraine Anne Lundy
LORRAINE ANNE LUNDY L.S. 6689

COUNTY SURVEYOR'S STATEMENT

THIS MAP HAS BEEN EXAMINED IN ACCORDANCE WITH SECTION 8766 OF THE LAND SURVEYOR'S ACT THIS 24th DAY OF June, 1996



Ronald D. McElroy
RONALD D. McELROY 15170
DEPUTY COUNTY SURVEYOR, BUTTE COUNTY
REG. EXPIRES 3/31/97

RECORDER'S STATEMENT

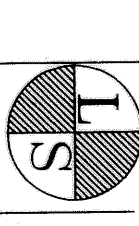
FILED THIS 26TH DAY OF JUNE, 1996
AT 8:01 A.M. IN BOOK 140 OF MAPS AT PAGES 17
SERIAL NO. 96-24313
AT THE REQUEST OF LORRAINE ANNE LUNDY.

CANDACE J. GRUBBS
COUNTY CLERK-RECORDER
BY DEPUTY *M. Chamberlain*

RECORD OF SURVEY

FOR
MARY DI DUCA

BEING A PORTION OF PARCELS 3 AND 4 OF BOOK 86 P/M PAGE 30-31, ALSO BEING A PORTION OF THE SE 1/4 OF SECTION 28, T22N, R3E, MDM
PARADISE BUTTE COUNTY CALIFORNIA



L & L SURVEYING

1007 BILLE ROAD PO BOX 671 PARADISE, CA 95967 (916)877-4300