



The Palm Club Individual or Household Membership

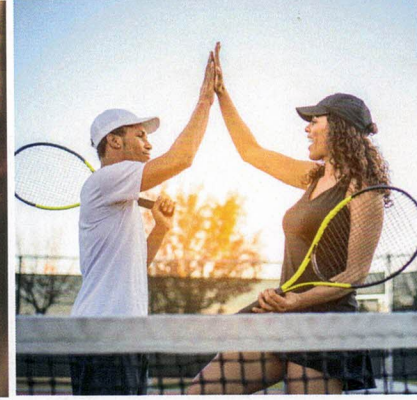
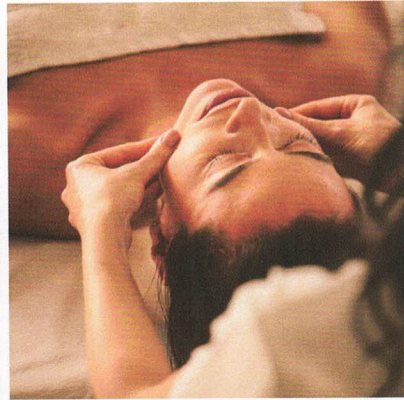
Initiation Fee: \$7,000
Monthly Dues for Individuals: \$700
Monthly Dues for Household: \$1,000

- Unlimited golf with 45-day advance tee times and preferred tee times
- Member only driving range and practice area
- Member only parking (car and golf cart)
- No trail fees for the use of private golf cart or fees for golf course carts
- Charging privileges around the resort
- Complimentary access to tennis and pickle ball courts
- 20% discounts on all food and beverage outlets, pro shop merchandise, and spa services
- Access to member only lounge
- Access to our fitness room and spa
- Access to all pools
- 2 free stays per year, each for 4 consecutive nights (total of 8 room nights per year). Once those are consumed and when available, we offer additional hotel rooms at a special rate, currently at \$109 and \$134
- Marriott Bonvoy points on restaurant venue
- Complimentary invitation to select resort activities and events (ie. Jazz series)

For information contact our Membership Director, Susan Grant
at 202-270-2177 or at Susan.Grant@WestinRanchoMirage.com



RACQUET SPORTS & SOCIAL CLUB



COST

Period	Individual	Household
90 days	\$180/mo	\$300/mo
6 months	\$130/mo	\$260/mo
12 months	\$100/mo	\$230/mo

DISCOUNT FEATURES

- 20% off Food & Beverage
- 20% off Spa Services, Fitness & Retail
- 20% off Westin Entertainment Event Tickets
- 20% off Pool Cabana Rentals
- 20% off Resort Accommodations
- 20% off Golf Green Fees

BENEFITS

- Resort charging privileges
- Unlimited access to pickleball & tennis courts
- Unlimited access to fitness center
- Access to all pools
- Use of driving range & putting green

THE WESTIN
 RANCHO MIRAGE
 GOLF RESORT & SPA

For information contact our Membership Director, Susan Grant 202-270-2177
 or at Susan.Grant@WestinRanchoMirage.com