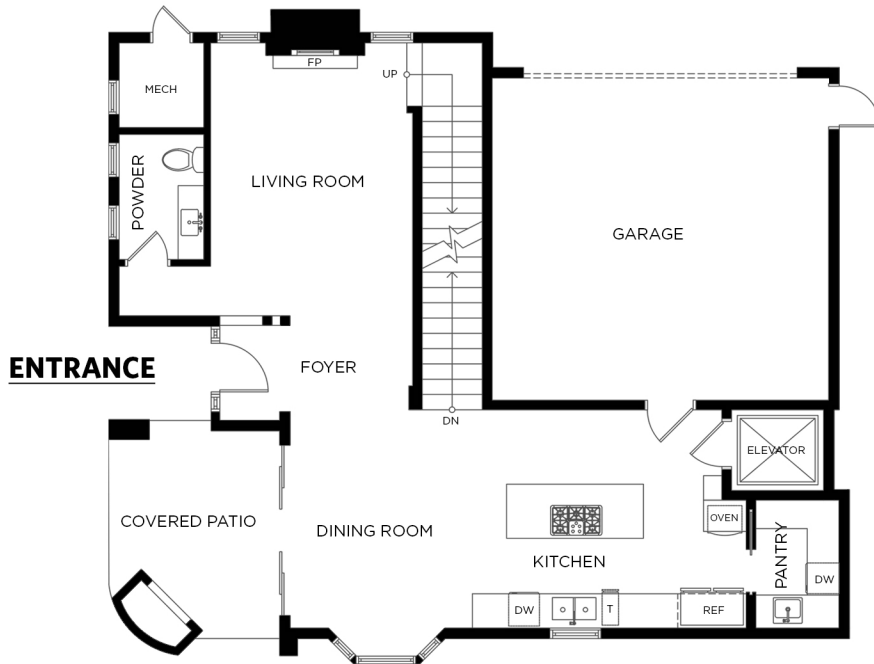


466 Westbourne St (C)

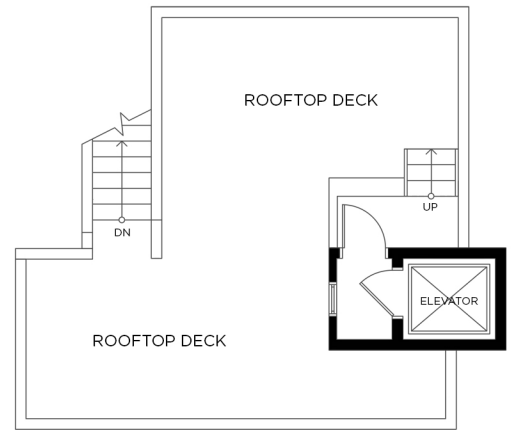
La Jolla, CA 92037

5BR + 3BA + Two 1/2 Bath - 3473 esf - 2 Car Gar
Living Room + Media Room + Walk-In Laundry + Storage/AV Room

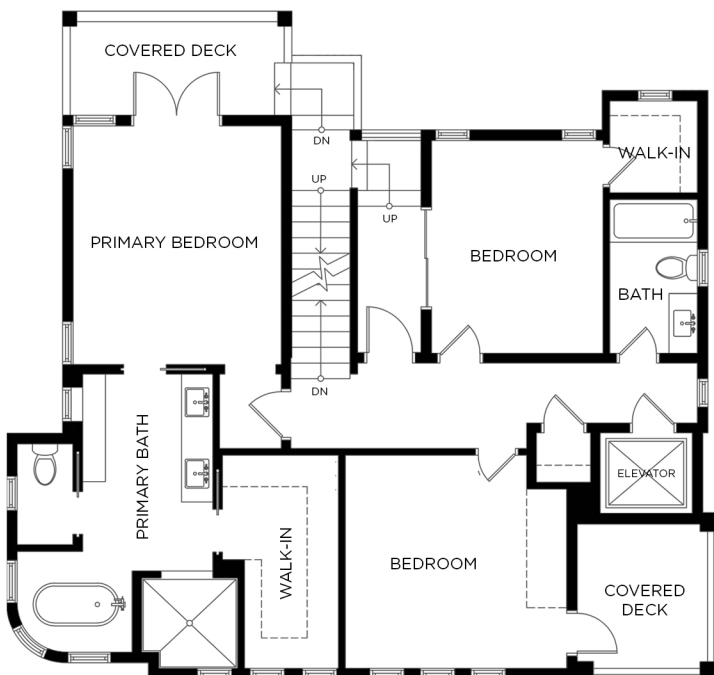
Entry Level



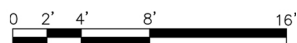
Rooftop Deck



2nd Floor



Lower Luxury Level



Floor plan not suitable for architectural/construction purposes. ANSI Z765 stand used to calculate square footage. Buyer to verify. E&O insured for \$1,000,000.