

Article 1: Base Zones

Division 5: Commercial Base Zones

(“Commercial Base Zones” added 12-9-1997 by O-18451 N.S.; effective 1-1-2000.)

§131.0501 Purpose of Commercial Zones

The purpose of the commercial zones is to provide for the employment, shopping, services, recreation, and lodging needs of the residents of and visitors to the City. The intent of the commercial zones is to provide distinct regulations for size, intensity, and design to reflect the variety of the desired *development* patterns within San Diego’s communities.

(Added 12-9-1997 by O-18451 N.S.; effective 1-1-2000.)

§131.0502 Purpose of the CN (Commercial--Neighborhood) Zones

- (a) The purpose of the CN zones is to provide residential areas with access to a limited number of convenient retail and personal service uses. The CN zones are intended to provide areas for small scale, low intensity *developments* that are consistent with the character of the surrounding residential areas. The zones in this category may include residential *development*. Property within the CN zones will be primarily located along local and selected collector *streets*.
- (b) The CN zones are differentiated based on the permitted *lot* size and pedestrian orientation as follows:
- CN-1-1 allows *development* of a limited size with a pedestrian orientation and permits a maximum *density* of 1 *dwelling unit* for each 3,000 square feet of *lot* area
 - CN-1-2 allows *development* with an auto orientation and permits a maximum *density* of 1 *dwelling unit* for each 1,500 square feet of *lot* area
 - CN-1-3 allows *development* with a pedestrian orientation and permits a maximum *density* of 1 *dwelling unit* for each 1,500 square feet of *lot* area
 - CN-1-4 allows *development* with a pedestrian orientation and permits a maximum *density* of 1 *dwelling unit* for each 1,000 square feet of *lot* area

- CN-1-5 allows *development* with a pedestrian orientation and permits a maximum *density* of 1 *dwelling unit* for each 600 square feet of *lot* area
- CN-1-6 allows *development* with a pedestrian orientation and permits a maximum *density* of 1 *dwelling unit* for each 800 square feet of *lot* area

(Added 12-9-1997 by O-18451 N.S.; effective 1-1-2000.)
(Amended 7-10-2015 by O-20512 N.S.; effective 8-9-2015.)
(Amended 12-1-2016 by O-20752 N.S.; effective 12-31-2016.)
(Amended 10-10-2018 by O-20991 N.S.; effective 11-9-2018.)

[Editors Note: Amendments as adopted by O-20991 N.S. will not apply within the Coastal Overlay Zone until the California Coastal Commission certifies O-20991 N.S. as a Local Coastal Program Amendment. Click the link to view the Strikeout Ordinance highlighting changes to prior language http://docs.sandiego.gov/municode_strikeout_ord/O-20991-SO.pdf]

§131.0503 Purpose of the CR (Commercial--Regional) Zones

- (a) The purpose of the CR zones is to provide areas for a broad mix of business/professional office, commercial service, retail, wholesale, and limited manufacturing uses. The CR zones are intended to accommodate large-scale, high intensity *developments*. Property within these zones will be primarily located along major *streets*, primary arterials, and major public transportation lines.
- (b) The CR zones are designed for auto-oriented *development* and are differentiated based on the uses allowed as follows:
- CR-1-1 allows a mix of regional serving commercial uses and residential uses with an auto orientation and permits a maximum *density* of 1 *dwelling unit* for each 1,500 square feet of *lot* area
 - CR-2-1 allows regional serving commercial and limited industrial uses with an auto orientation but no residential use

(Added 12-9-1997 by O-18451 N.S.; effective 1-1-2000.)
(Amended 7-10-2015 by O-20512 N.S.; effective 8-9-2015.)

§131.0504 Purpose of the CO (Commercial--Office) Zones

- (a) The purpose of the CO zones is to provide areas for employment uses with limited, complementary retail uses and residential use as specified. The CO zones are intended to apply in large-scale activity centers or in specialized areas where a full range of commercial activities is not desirable.
- (b) The CO zones are differentiated based on the uses and development scale allowed as follows:
- (1) The following zones allow residential *development*:
- CO-1-1 is intended to accommodate a mix of office and residential uses with a neighborhood scale and orientation and permits a maximum *density* of 1 *dwelling unit* for each 1,000 square feet of *lot* area
 - CO-1-2 is intended to accommodate a mix of office and residential uses that serve as an employment center and permits a maximum *density* of 1 *dwelling unit* for each 1,500 square feet of *lot* area
- (2) The following zones allow limited residential *development*:
- CO-2-1 is intended to accommodate office uses with a neighborhood scale and orientation
 - CO-2-2 is intended to accommodate office uses that serve as an employment center
- (3) The following zones allow residential *development* in high- intensity, pedestrian-oriented business park development:
- CO-3-1 is intended to accommodate a mix of office uses that serve as a high-intensity employment center with residential uses and limited, complementary retail uses and permits a maximum *density* of 1 *dwelling unit* for each 1,000 square feet of *lot* area
 - CO-3-2 is intended to accommodate a mix of office and residential uses and permits a maximum *density* of 1 *dwelling unit* for each 800 square feet of *lot* area

- CO-3-3 is intended to accommodate a mix of office and residential uses and permits a maximum *density* of 1 *dwelling unit* for each 600 square feet of *lot area*

(Added 12-9-1997 by O-18451 N.S.; effective 1-1-2000.)

(Amended 7-10-2015 by O-20512 N.S.; effective 8-9-2015.)

(Amended 10-10-2018 by O-20991 N.S.; effective 11-9-2018.)

[Editors Note: Amendments as adopted by O-20991 N.S. will not apply within the Coastal Overlay Zone until the California Coastal Commission certifies O-20991 N.S. as a Local Coastal Program Amendment.

Click the link to view the Strikeout Ordinance highlighting changes to prior language http://docs.sandiego.gov/municode_strikeout_ord/O-20991-SO.pdf]

(Amended 8-9-2019 by O-21114 N.S.; effective 9-8-2019.)

§131.0505 Purpose of the CV (Commercial--Visitor) Zones

- (a) The purpose of the CV zones is to provide areas for establishments catering to the lodging, dining, and recreational needs of both tourists and the local population. The CV zones are intended for areas located near employment centers and areas with recreational resources or other visitor attractions.
- (b) The CV zones are differentiated based on *development* size and orientation as follows:
 - CV-1-1 is intended to accommodate a mix of large-scale, visitor-serving uses and residential uses and permits a maximum *density* of 1 *dwelling unit* for each 1,500 square feet of *lot area*
 - CV-1-2 is intended to accommodate a mix of visitor-serving uses and residential uses with a pedestrian orientation and permits a maximum *density* of 1 *dwelling unit* for each 1,500 square feet of *lot area*

(Added 12-9-1997 by O-18451 N.S.; effective 1-1-2000.)

(Amended 7-10-2015 by O-20512 N.S.; effective 8-9-2015.)

§131.0506 Purpose of the CP (Commercial--Parking) Zone

The purpose of the CP zone is to provide off-street parking areas for passenger automobiles. The CP zone is intended to be applied in conjunction with established commercial areas to provide needed or required off-street parking.

(Added 12-9-1997 by O-18451 N.S.; effective 1-1-2000.)

§131.0507 Purpose of the CC (Commercial--Community) Zones

- (a) The purpose of the CC zones is to accommodate community-serving commercial services, retail uses, and limited industrial uses of moderate intensity and small to medium scale. The CC zones are intended to provide for a range of *development* patterns from pedestrian-friendly commercial *streets* to shopping centers and auto-oriented strip commercial *streets*. Some of the CC zones may include residential *development*. Property within the CC zones will be primarily located along collector *streets*, major *streets*, and public transportation lines.
- (b) The CC zones are differentiated based on the uses allowed and regulations as follows:
- (1) The following zones allow a mix of community-serving commercial uses and residential uses:
- CC-1-1 is intended to accommodate *development* with strip commercial characteristics and permits a maximum *density* of 1 *dwelling unit* for each 1,500 square feet of *lot area*
 - CC-1-2 is intended to accommodate *development* with high intensity, strip commercial characteristics and permits a maximum *density* of 1 *dwelling unit* for each 1,500 square feet of *lot area*
 - CC-1-3 is intended to accommodate *development* with an auto orientation and permits a maximum *density* of 1 *dwelling unit* for each 1,500 square feet of *lot area*
- (2) The following zones allow community-serving uses with limited residential uses:
- CC-2-1 is intended to accommodate *development* with strip commercial characteristics

- CC-2-2 is intended to accommodate *development* with high intensity, strip commercial characteristics
 - CC-2-3 is intended to accommodate *development* with an auto orientation
 - CC-2-4 is intended to accommodate *development* with a pedestrian orientation
 - CC-2-5 is intended to accommodate *development* with a high intensity, pedestrian orientation
- (3) The following zones allow a mix of pedestrian-oriented, community-serving commercial uses and residential uses:
- CC-3-4 is intended to accommodate *development* with a pedestrian orientation and permits a maximum *density* of 1 *dwelling unit* for each 1,500 square feet of *lot area*
 - CC-3-5 is intended to accommodate *development* with a high intensity, pedestrian orientation and permits a maximum *density* of 1 *dwelling unit* for each 1,500 square feet of *lot area*
 - CC-3-6 is intended to accommodate *development* with a high intensity, pedestrian orientation and permits a maximum *density* of 1 *dwelling unit* for each 1,000 square feet of *lot area*
 - CC-3-7 is intended to accommodate *development* with a high intensity, pedestrian orientation and permits a maximum *density* of 1 *dwelling unit* for each 800 square feet of *lot area*
 - CC-3-8 is intended to accommodate *development* with a high intensity, pedestrian orientation and permits a maximum *density* of 1 *dwelling unit* for each 600 square feet of *lot area*
 - CC-3-9 is intended to accommodate *development* with a high intensity, pedestrian orientation and permits a maximum *density* of 1 *dwelling unit* for each 400 square feet of *lot area*

- (4) The following zones allow heavy commercial uses and residential uses:
- CC-4-1 is intended to accommodate *development* with strip commercial characteristics and permits a maximum *density* of 1 *dwelling unit* for each 1,500 square feet of *lot area*
 - CC-4-2 is intended to accommodate *development* with high intensity, strip commercial characteristics and permits a maximum *density* of 1 *dwelling unit* for each 1,500 square feet of *lot area*
 - CC-4-3 is intended to accommodate *development* with an auto orientation and permits a maximum *density* of 1 *dwelling unit* for each 1,500 square feet of *lot area*
 - CC-4-4 is intended to accommodate *development* with a pedestrian orientation and permits a maximum *density* of 1 *dwelling unit* for each 1,500 square feet of *lot area*
 - CC-4-5 is intended to accommodate *development* with a high intensity, pedestrian orientation and permits a maximum *density* of 1 *dwelling unit* for each 1,500 square feet of *lot area*
 - CC-4-6 is intended to accommodate *development* with a high intensity, pedestrian orientation and permits a maximum *density* of 1 *dwelling unit* for each 1,000 square feet of *lot area*
- (5) The following zones allow a mix of heavy commercial and limited industrial uses and residential uses:
- CC-5-1 is intended to accommodate *development* with strip commercial characteristics and permits a maximum *density* of 1 *dwelling unit* for each 1,500 square feet of *lot area*
 - CC-5-2 is intended to accommodate *development* with high intensity, strip commercial characteristics and permits a maximum *density* of 1 *dwelling unit* for each 1,500 square feet of *lot area*
 - CC-5-3 is intended to accommodate *development* with an auto orientation and permits a maximum *density* of 1 *dwelling unit* for each 1,500 square feet of *lot area*

- CC-5-4 is intended to accommodate *development* with a pedestrian orientation and permits a maximum *density* of 1 *dwelling unit* for each 1,500 square feet of *lot area*
- CC-5-5 is intended to accommodate *development* with a high intensity, pedestrian orientation and permits a maximum *density* of 1 *dwelling unit* for each 1,500 square feet of *lot area*
- CC-5-6 is intended to accommodate *development* with a high intensity, pedestrian orientation and permits a maximum *density* of 1 *dwelling unit* for each 1,000 square feet of *lot area*

(Added 12-9-1997 by O-18451 N.S.; effective 1-1-2000.)
(Amended 7-10-2015 by O-20512 N.S.; effective 8-9-2015.)
(Amended 1-8-2020 by O-21164 N.S.; effective 2-9-2020.)

§131.0515 Where Commercial Zones Apply

On the effective date of Ordinance O-18692, all commercial zones that were established in Municipal Code Chapter 10, Article 1, Division 4 were amended and replaced with the base zones established in this division.

(Added 12-9-1997 by O-18451 N.S.; effective 1-1-2000.)
(Amended 11-13-2008 by O-19801 N.S.; effective 12-13-2008.)

§131.0520 Use Regulations of Commercial Zones

The regulations of Section 131.0522 apply in the commercial zones where indicated in Table 131-05B.

- (a) The uses permitted in any commercial zone may be further limited by the following:
- (1) Section 131.0540 (Maximum permitted residential *density* and other residential regulations);
 - (2) Use limitations applicable to the Airport Land Use Compatibility Overlay Zone (Chapter 13, Article 2, Division 15);

- (3) The presence of *environmentally sensitive lands*, pursuant to Chapter 14, Article 3, Division 1 (Environmentally Sensitive Lands Regulations); or
 - (4) Any other applicable provision of the San Diego Municipal Code.
- (b) Within the commercial zones, no *structure* or improvement, or portion thereof, shall be constructed, established, or altered, nor shall any *premises* be used or maintained except for one or more of the purposes or activities listed in Table 131-05B. It is unlawful to establish, maintain, or use any *premises* for any purpose or activity not listed in this section or Section 131.0522.
 - (c) All uses or activities permitted in the commercial zones shall be conducted entirely within an enclosed building unless the use or activity is traditionally conducted outdoors.
 - (d) *Accessory uses* in the commercial zones may be permitted in accordance with Section 131.0125.
 - (e) Temporary uses may be permitted in the commercial zones for a limited period of time with a Temporary Use Permit in accordance with Chapter 12, Article 3, Division 4.
 - (f) For any use that cannot be readily classified, the City Manager shall determine the appropriate use category and use subcategory pursuant to Section 131.0110.

(Added 12-9-1997 by O-18451 N.S.; effective 1-1-2000.)

(Amended 10-25-2011 by O-20047 N.S.; effective 1-1-2012.)

(Amended 6-18-2013 by O-20261 N.S.; effective 7-19-2013.)

§131.0522 Use Regulations Table for Commercial Zones

The uses allowed in the commercial zones are shown in Table 131-05B.

Legend for Table 131-05B

Symbol in Table 131-05B	Description of Symbol
P	Use or use category is permitted. Regulations pertaining to a specific use may be referenced.
L	Use is permitted with limitations, which may include location limitations or the requirement for a use or <i>development permit</i> . Regulations are located in Chapter 14, Article 1 (Separately Regula - amended 10-23-17ted Use Regulations).
N	Neighborhood Use Permit Required. Regulations are located in Chapter 14, Article 1 (Separately Regulated Use Regulations).
C	Conditional Use Permit Required. Regulations are located in Chapter 14, Article 1 (Separately Regulated Use Regulations).
-	Use or use category is not permitted.

**Table 131-05B
Use Regulations Table for Commercial Zones**

Use Categories/Subcategories [See Section 131.0112 for an explanation and descriptions of the Use Categories, Subcategories, and Separately Regulated Uses]	Zone Designator	Zones																
	1st & 2nd >>	CN ⁽¹⁾ -					CR-		CO-					CV-		CP-		
	3rd >>	1-					1-	2-	1-	2-	3-	1-	1-					
	4th >>	1	2	3	4	5	6	1	1	1	2	1	2	1	2	3	1	2
Open Space																		
Active Recreation	-	-	-	-	-	-	-	-	-	-	-	-	-	-	-	-	-	
Passive Recreation	-	-	-	-	-	-	-	-	-	-	-	-	-	-	-	-	-	
Natural Resources Preservation	-	-	-	-	-	-	-	-	-	-	-	-	-	-	-	-	-	
Park Maintenance Facilities	-	-	-	-	-	-	-	-	-	-	-	-	-	-	-	-	-	
Agriculture																		
Agricultural Processing	-	-	-	-	-	-	-	-	-	-	-	-	-	-	-	-	-	
Aquaculture Facilities	-	-	-	-	-	-	-	-	-	-	-	-	-	-	-	-	-	
Dairies																		
Horticulture Nurseries & Greenhouses	-	-	-	-	-	-	-	-	-	-	-	-	-	-	-	-	-	
Raising & Harvesting of Crops	-	-	-	-	-	-	-	-	-	-	-	-	-	-	-	-	-	
Raising, Maintaining & Keeping of Animals	-	-	-	-	-	-	-	-	-	-	-	-	-	-	-	-	-	
Separately Regulated Agriculture Uses																		
Agricultural Equipment Repair Shops	-	-	-	-	-	-	P	P	-	-	-	-	-	-	-	-	-	
Commercial Stables	-	-	-	-	-	-	-	-	-	-	-	-	-	-	-	L	-	
Community Gardens	L	L	L	L	L	L	L	L	L	L	L	L	L	L	L	L	L	
Equestrian Show & Exhibition Facilities	-	-	-	-	-	-	-	-	-	-	-	-	-	-	-	C	-	
Open Air Markets for the Sale of Agriculture-related Products & Flowers	-	-	-	-	-	-	-	-	-	-	-	-	-	-	-	-	-	
Residential																		
Mobilehome Parks	-	-	-	-	-	-	-	-	-	-	-	-	-	-	-	-	-	
Multiple Dwelling Units	P ⁽²⁾	P ⁽²⁾	-	-	-	-	P ⁽²⁾	-	P ⁽²⁾	-	P ⁽²⁾	-	P ⁽²⁾	P ⁽²⁾	-	P ⁽²⁾	-	
Rooming House [See Section 131.0112(a)(3)(A)]	P ⁽²⁾	P	-	-	-	-	P	-	P	-	P	-	P	P ⁽²⁾	-	P ⁽²⁾	-	
Shopkeeper Units	P ⁽²⁾	P ⁽²⁾	-	-	-	-	P ⁽²⁾	-	P ⁽²⁾	-	P ⁽²⁾	-	P ⁽²⁾	P ⁽²⁾	-	P ⁽²⁾	-	
Single Dwelling Units	-	-	-	-	-	-	-	-	-	-	-	-	-	-	-	-	-	
Separately Regulated Residential Uses																		
Accessory Dwelling Units	L	L	-	-	-	-	L	-	L	-	L	-	L	L	-	L	-	
Continuing Care Retirement Communities	L	L	-	-	-	-	L	-	L	-	L	-	L	L	-	L	-	
Employee Housing:																		
6 or Fewer Employees	-	-	-	-	-	-	-	-	-	-	-	-	-	-	-	-	-	

Use Categories/Subcategories [See Section 131.0112 for an explanation and descriptions of the Use Categories, Subcategories, and Separately Regulated Uses]	Zone Designator	Zones																	
	1st & 2nd >>	CN ⁽¹⁾ -					CR-		CO-					CV-		CP-			
	3rd >>	1-					1-	2-	1-		2-		3-	1-	1-				
	4th >>	1	2	3	4	5	6	1	1	1	2	1	2	1	2	3	1	2	1
12 or Fewer Employees		-	-	-	-	-	-	-	-	-	-	-	-	-	-	-	-	-	-
Greater than 12 Employees		-	-	-	-	-	-	-	-	-	-	-	-	-	-	-	-	-	-
Fraternities and Sororities		L ⁽²⁾					L	-	L	-	-	-	-	-	-	L ⁽²⁾	-	-	-
Garage, Yard, & Estate Sales		-	-	-	-	-	-	-	-	-	-	-	-	-	-	-	-	-	-
Guest Quarters		-	-	-	-	-	-	-	-	-	-	-	-	-	-	-	-	-	-
Home Occupations		L					L	-	L	-	-	-	L	-	-	L	-	-	-
Interim Ground <i>Floor Residential</i>		N ⁽¹⁸⁾					N ⁽¹⁸⁾	-	N ⁽¹⁸⁾	-	-	-	N ⁽¹⁸⁾	-	-	N ⁽¹⁸⁾	-	-	-
<i>Junior Accessory Dwelling Units</i>		-	-	-	-	-	-	-	-	-	-	-	-	-	-	-	-	-	-
Live/Work Quarters		L					L	L	L	-	-	-	L	-	-	L ¹⁸	-	-	-
Low Barrier Navigation Center		L					L	-	L	-	-	-	L	-	-	L	-	-	-
<i>Movable Tiny Houses</i>		-	-	-	-	-	-	-	-	-	-	-	-	-	-	-	-	-	-
<i>Permanent Supportive Housing</i>		L					L	L	L	L	L	L	L	L	L	L	L	L	L
Residential Care Facilities:																			
6 or Fewer Persons		P ⁽²⁾					P	-	P	-	-	-	P	-	-	P ⁽²⁾	-	-	-
7 or More Persons		C ⁽²⁾					C	-	C	-	-	-	C	-	-	C ⁽²⁾	-	-	-
Student Housing		L ⁽²⁾					L	-	L	-	-	-	-	-	-	L ⁽²⁾	-	-	-
Transitional Housing:																			
6 or Fewer Persons		P ⁽²⁾					P	-	P	-	P	-	P	-	-	P ⁽²⁾	-	-	-
7 or More Persons		L ⁽²⁾					L	-	L	L	L	L	L	L	L	L ⁽²⁾	-	-	-
Watchkeeper Quarters		-	-	-	-	-	-	L	-	-	-	-	-	-	-	-	-	-	-
Institutional																			
Separately Regulated Institutional Uses																			
Airports		-	-	-	-	-	C	C	C	C	C	C	-	-	-	C ⁽¹⁰⁾	-	-	-
Battery Energy Storage Facilities																			
Small Scale (≤ 0.25 acre)		-	-	-	-	-	L	L	L	L	L	L	L	L	L	L	L	L	L
Medium Scale (0.25 acre < 1 acre)		-	-	-	-	-	C	C	C	C	C	C	C	C	C	C	C	C	C
Large Scale (>1 acre)		-	-	-	-	-	C	C	C	C	C	C	C	C	C	C	C	C	C
Botanical Gardens & Arboretums		-	-	-	-	-	P	P	C	C	C	C	-	-	-	P	-	-	-
Cemeteries, Mausoleums, Crematories		-	-	-	-	-	C	C	C	C	C	C	-	-	-	C ⁽¹⁰⁾	-	-	-
Correctional Placement Centers		-	-	-	-	-	C	C	C	C	C	C	-	-	-	C ⁽¹⁰⁾	-	-	-
Educational Facilities:																			
Kindergarten through Grade 12		C ⁽¹⁰⁾					L	L	C	C	C	C	C	C	C	C ⁽¹⁰⁾	-	-	-
Colleges / Universities		-	-	-	-	-	C	C	C	C	C	C	C	C	C	C ⁽¹⁰⁾	-	-	-

Use Categories/Subcategories [See Section 131.0112 for an explanation and descriptions of the Use Categories, Subcategories, and Separately Regulated Uses]	Zone Designator	Zones														
	1st & 2nd >>	CN ⁽¹⁾ -			CR-		CO-			CV-		CP-				
	3rd >>	1-			1-	2-	1-		2-		3-	1-	1-			
	4th >>	1	2	3	4	5	6	1	1	1	2	1	2	3	1	2
Vocational / Trade School		-					P	P	P	P	C	-	-			
Electric Vehicle Charging Stations		L					L	L	L	L	L	L	L	L		
Energy Generation & Distribution Facilities		C ⁽¹⁰⁾					P	C	P	P	C	P ⁽¹⁰⁾	-			
Exhibit Halls & Convention Facilities		-					P	P	C	C	-	P	-			
Flood Control Facilities		L					L	L	L	L	L	L	L	-		
Historical Buildings Used for Purposes Not Otherwise Allowed		C ⁽¹⁰⁾					C	C	C	C	C	C ⁽¹⁰⁾	-			
Homeless Facilities:																
Congregate Meal Facilities		C					C	-	C	C	C	C	C	-		
Emergency Shelters		C					C	-	C	C	C	C	C	-		
Homeless Day Centers		C					C	-	C	C	C	C	C	-		
Hospitals, Intermediate Care Facilities & Nursing Facilities		-					P	P	C	C	C	P ⁽¹⁰⁾	-			
Interpretive Centers		-					-	-	-	-	-	-	-			
Museums		-					P	P	C	C	C	C	P	-		
Major Transmission, Relay, or Communications Switching Stations		-					C	C	C	C	C	C ⁽¹⁰⁾	-			
Placemaking on Private Property		L					L	L	L	L	L	L	L	L		
Outdoor Dining on Private Property		L					L	L	L	L	L	L	L	-		
Satellite Antennas		L					L	L	L	L	L	L	L	L		
Social Service Institutions		-					C	C	C	C	C	C ⁽¹⁰⁾	-			
Solar Energy Systems		L					L	L	L	L	L	L	L	L		
Wireless Communications Facilities		See Section 141.0420														
Retail Sales																
Building Supplies & Equipment		P ⁽¹¹⁾					P ⁽¹¹⁾	P ⁽¹¹⁾	-	-	-	-	-	-		
Food, Beverages and Groceries		P ⁽¹¹⁾					P ⁽¹¹⁾	P ⁽¹¹⁾	P ⁽¹¹⁾	P ⁽¹¹⁾	P ^(11,19)	P ⁽¹¹⁾	-			
Consumer Goods, Furniture, Appliances, Equipment		P ⁽¹¹⁾					P ⁽¹¹⁾	P ⁽¹¹⁾	P ^(3,11)	P ^(3,11)	P ^(3,11,19)	P ⁽¹³⁾	-			
Pets & Pet Supplies		P ⁽¹¹⁾					P ⁽¹¹⁾	P ⁽¹¹⁾	-	-	-	-	-			
Sundries, Pharmaceutical, & Convenience Sales		P ⁽¹¹⁾					P ⁽¹¹⁾	P ⁽¹¹⁾	P ⁽¹¹⁾	P ⁽¹¹⁾	P ^(11,19)	P ⁽¹¹⁾	-			
Wearing Apparel & Accessories		P ⁽¹¹⁾					P ⁽¹¹⁾	P ⁽¹¹⁾	-	-	P ^(11,19)	P ⁽¹¹⁾	-			

Use Categories/Subcategories [See Section 131.0112 for an explanation and descriptions of the Use Categories, Subcategories, and Separately Regulated Uses]	Zone Designator	Zones																	
	1st & 2nd >>	CN ⁽¹⁾ -					CR-		CO-					CV-		CP-			
	3rd >>	1-					1-	2-	1-		2-	3-			1-	1-			
	4th >>	1	2	3	4	5	6	1	1	1	2	1	2	1	2	3	1	2	1
Separately Regulated Retail Sales Uses																			
Agriculture Related Supplies & Equipment		-					P	P	-	-	-	-	-	-	-	-	-	-	-
Alcoholic Beverage Outlets		L					L	L	L	L	L	L	L	L	L	L	L	L	-
<i>Cannabis Outlets</i>		-					-	C	-	C	-	C	-	-	-	-	-	-	-
Farmers' Markets																			
Weekly Farmers' Markets		L					L	L	L	L	L	L	L	L	L	L	L	L	L
Daily Farmers' Market Stands		L					L	L	L	L	L	L	L	L	L	L	L	L	-
Plant Nurseries		P					P	P	P	-	-	-	-	-	-	-	-	-	-
Retail Farms		L					L	L	L	L	L	L	L	L	L	L	L	L	-
Retail Tasting Stores		L					L	L	L	L	L	L	L	L	L	L	L	L	-
Swap Meets & Other Large Outdoor Retail Facilities		-					C	C	-	-	-	-	-	-	-	-	C ⁽¹⁰⁾	-	-
Commercial Services																			
Building Services		-					P	P	p ⁽⁶⁾	p ⁽⁶⁾	p ⁽⁶⁾	p ⁽⁶⁾	p ⁽⁶⁾	p ⁽⁶⁾	p ⁽⁶⁾	-	-	-	-
Business Support		P					P	P	p ⁽⁵⁾	p ⁽⁷⁾	p ⁽⁷⁾	p ⁽⁷⁾	p ⁽⁷⁾	p ⁽⁷⁾	p ⁽⁷⁾	-	-	-	-
Eating & Drinking Establishments		p ⁽⁴⁾⁽¹⁶⁾					p ⁽¹⁶⁾	p ⁽¹⁶⁾	p ^(5,16)	p ^(5,16)	p ^(5,16)	p ^(5,16)	p ^(5,16)	p ^(5,16)	p ^(5,16)	p ⁽¹⁶⁾	-	-	-
Financial Institutions		P					P	P	P	P	P	P	P	P	P	-	-	-	-
Funeral & Mortuary Services		-					P	P	-	-	-	-	-	-	-	-	-	-	-
Instructional Studios		P					P	P	P	P	P	P	P	P	P	P ⁽¹²⁾	-	-	-
Maintenance & Repair		P					P	P	p ⁽⁶⁾	p ⁽⁶⁾	p ⁽⁶⁾	p ⁽⁶⁾	p ⁽⁶⁾	p ⁽⁶⁾	p ⁽⁶⁾	-	-	-	-
Off-site Services		-					P	P	-	-	-	-	-	-	-	-	-	-	-
Personal Services		P					P	P	-	-	-	P	P	P	P	P	P	P	-
Radio & Television Studios		-					P	P	-	-	-	P	P	P	P	-	-	-	-
Tasting Rooms		-					-	-	-	-	-	-	P	P	P	-	-	-	-
Visitor Accommodations		P					P	P	-	-	P	P	P	P	P	P	P	P	-
Separately Regulated Commercial Services Uses																			
<i>Adult Day Care Facility</i>		L					L	L	-	L	-	L	L	L	L	L	L	L	-
Adult Entertainment Establishments:																			

Use Categories/Subcategories [See Section 131.0112 for an explanation and descriptions of the Use Categories, Subcategories, and Separately Regulated Uses]	Zone Designator	Zones																
	1st & 2nd >>	CN ⁽¹⁾ -					CR-		CO-					CV-		CP-		
	3rd >>	1-					1-	2-	1-		2-		3-	1-	1-			
	4th >>	1	2	3	4	5	6	1	1	1	2	1	2	1	2	3	1	2
Adult Book Store		L					L	L	-	-	-	-	-	-	-			
Adult Cabaret		-					L	L	-	-	-	-	L	-				
Adult Drive-In Theater		-					L	L	-	-	-	-	L	-				
Adult Mini-Motion Picture Theater		-					L	L	-	-	-	-	L	-				
Adult Model Studio		L					L	L	-	-	-	-	L	-				
Adult <i>Motel</i>		-					L	L	-	-	-	-	L	-				
Adult Motion Picture Theater		-					L	L	-	-	-	-	L	-				
Adult Peep Show Theater		-					L	L	-	-	-	-	L	-				
Adult Theater		-					L	L	-	-	-	-	L	-				
Body Painting Studio		L					L	L	-	-	-	-	L	-				
Massage Establishment		L					L	L	-	-	-	-	-	-				
Sexual Encounter Establishment		L					L	L	-	-	-	-	L	-				
Assembly and Entertainment Uses, Including Places of Religious Assembly		L ⁽¹⁰⁾					L	L	L	L	L	L	L ⁽¹⁰⁾	-				
Boarding Kennels/Pet Day Care		L					L	L	N	N	-	-	N ⁽¹⁰⁾	-				
Camping Parks		-					C	C	C	C	-	-	C	-				
<i>Child Care Facilities:</i>																		
Child Care Centers		L					L	-	L	L	L	L	L ⁽¹⁰⁾	-				
Large Family Child Care Homes		L					L	-	L	L	L	L	L ⁽¹⁰⁾	-				
Small Family Child Care Homes		L					L	-	L	L	L	L	L	-				
Eating and Drinking Establishments with a Drive-in or Drive-through Component		-	C	-	-	-	-	P		P	P	-	P	-	-			
Fairgrounds		-					C	C	-	-	-	-	C	-				
Golf Courses, Driving Ranges, and Pitch & Putt Courses		-					C	C	C	C	-	-	C	-				
Helicopter Landing Facilities		-					C	C	C	C	C	C	C ⁽¹⁰⁾	-				
Massage Establishments, Specialized Practice		L					L	L	-	-	-	-	L ⁽¹⁴⁾	-				
Mobile Food Trucks		L ⁽¹⁵⁾					L ⁽¹⁵⁾	L ⁽¹⁵⁾	L ⁽¹⁵⁾	L ⁽¹⁵⁾	L ⁽¹⁵⁾	L ⁽¹⁵⁾	L ⁽¹⁵⁾	L ⁽¹⁵⁾				
Nightclubs & Bars Over 5,000 Square Feet in Size		-					C	C	C	C	C	C	C	-				
<i>Parking Facilities as a Primary Use:</i>																		
Permanent Parking Facilities		-					P	P	C	C	-	-	C	P				
Temporary Parking Facilities		-					N	N	C	C	C	C	C	N				
Private Clubs, Lodges and Fraternal Organizations		P ⁽¹⁰⁾					P	P	P	P	P	P	P ⁽¹⁰⁾	-				

Use Categories/Subcategories [See Section 131.0112 for an explanation and descriptions of the Use Categories, Subcategories, and Separately Regulated Uses]	Zone Designator	Zones														
	1st & 2nd >>	CN ⁽¹⁾ -					CR-		CO-			CV-	CP-			
	3rd >>	1-					1-	2-	1-	2-	3-	1-	1-			
	4th >>	1	2	3	4	5	6	1	1	1	2	1	2	3	1	2
Privately Operated, Outdoor Recreation Facilities over 40,000 Square Feet in Size ⁽⁹⁾		-					P	P	C	C	-	C	-			
Pushcarts on Private Property		L					L	L	L	L	L	L	-			
Recycling Facilities:																
Large Collection Facility		N					N	N	N	N	-	N ⁽¹⁰⁾	-			
Small Collection Facility		L					L	L	L	L	-	L ⁽¹⁰⁾	-			
Large Construction & Demolition Debris Recycling Facility		-					-	-	-	-	-	-	-			
Small Construction & Demolition Debris Recycling Facility		-					-	-	-	-	-	-	-			
Drop-off Facility		L					L	L	L	L	-	L	-			
Green Materials Composting Facility		-					-	-	-	-	-	-	-			
Mixed Organic Composting Facility		-					-	-	-	-	-	-	-			
Large Processing Facility Accepting at Least 98% of Total Annual Weight of Recyclables from Commercial & Industrial Traffic		-					-	-	-	-	-	-	-			
Large Processing Facility Accepting All Types of Traffic		-					-	-	-	-	-	-	-			
Small Processing Facility Accepting at Least 98% of Total Annual Weight of Recyclables From Commercial & Industrial Traffic		-					-	-	-	-	-	-	-			
Small Processing Facility Accepting All Types of Traffic		-					-	-	-	-	-	-	-			
Reverse Vending Machines		L					L	L	L	L	L	L	-			
Tire Processing Facility		-					-	-	-	-	-	-	-			
Sidewalk Cafes, Streetaries, and Active Sidewalks		L					L	L	L	L	L	L	-			
Sports Arenas & Stadiums		-					C	C	C	C	-	C	-			

Use Categories/Subcategories [See Section 131.0112 for an explanation and descriptions of the Use Categories, Subcategories, and Separately Regulated Uses]	Zone Designator	Zones																
	1st & 2nd >>	CN ⁽¹⁾ -						CR-		CO-						CV-		CP-
	3rd >>	1-						1-	2-	1-		2-		3-		1-	1-	
	4th >>	1	2	3	4	5	6	1	1	1	2	1	2	1	2	3	1	2
Theaters that are Outdoor or Over 5,000 Square Feet in Size		-	-	-	-	-	-	C	C	C	C	-	-	-	-	C	-	-
Urgent Care Facilities		N	-	-	-	-	-	N	N	N	N	N	N	N	N	N ⁽¹⁰⁾	-	
Veterinary Clinics & Animal Hospitals		L	-	-	-	-	-	L	L	N	N	N	N	N	-	-	-	
Zoological Parks		-	-	-	-	-	-	-	-	-	-	-	-	-	-	-	-	
Offices																		
Business & Professional		P ⁽⁷⁾						P	P	P	P	P	P	P ¹⁹	-	-	-	-
Government		P						P	P	P	P	P	P	P ¹⁹	-	-	-	-
Medical, Dental & Health Practitioner		P						P	P	P	P	P	P	P ¹⁹	P ⁽¹⁰⁾	-	-	-
Regional & Corporate Headquarters		P						P	P	P	P	P	P	P ¹⁹	-	-	-	-
Separately Regulated Office Uses																		
Real Estate Sales Offices & Model Homes		L						L	-	L	L	L	L	L	L	L	-	-
<i>Sex Offender</i> Treatment & Counseling		L						L	L	L	L	L	L	L	L ⁽¹⁰⁾	-	-	-
Vehicle & Vehicular Equipment Sales & Service																		
Commercial Vehicle Repair & Maintenance		-						P	P	-	-	-	-	-	-	-	-	-
Commercial Vehicle Sales & Rentals		-						P	P	-	-	-	-	-	-	-	-	-
Personal Vehicle Repair & Maintenance		-						P	P	-	-	-	-	-	-	-	-	-
Personal Vehicle Sales & Rentals		-						P	P	-	-	-	-	-	-	-	-	-
Vehicle Equipment & Supplies Sales & Rentals		-						P	P	-	-	-	-	-	-	-	-	-
Separately Regulated Vehicle & Vehicular Equipment Sales & Service Uses																		
Automobile Service Stations		-						N	N	C	C	C	C	C	C	-	-	-
Outdoor Storage & Display of New, Unregistered Motor Vehicles as a <i>Primary Use</i>		-						C	C	-	-	-	-	-	-	-	-	-
Vehicle Storage Facilities as a <i>Primary Use</i>		-						-	-	-	-	-	-	-	-	-	-	-
Distribution and Storage																		
Equipment & Materials Storage Yards		-						-	P	-	-	-	-	-	-	-	-	-
Moving & Storage Facilities		-						-	P	-	-	-	-	-	-	-	-	-
Distribution Facilities		-						-	P ⁽⁸⁾	-	-	-	-	-	-	-	-	-
Separately Regulated Distribution and Storage Uses																		
Junk Yards		-						-	-	-	-	-	-	-	-	-	-	-

Use Categories/Subcategories [See Section 131.0112 for an explanation and descriptions of the Use Categories, Subcategories, and Separately Regulated Uses]	Zone Designator	Zones															
	1st & 2nd >>	CN ⁽¹⁾ -					CR-		CO-			CV-	CP-				
	3rd >>	1-					1-	2-	1-	2-	3-	1-	1-				
	4th >>	1	2	3	4	5	6	1	1	1	2	1	2	3	1	2	1
Temporary Construction Storage Yards Located Off-site		L					L	L	L		L	L	L	L	-		
Industrial																	
Heavy Manufacturing		-	-	-	-	-	-	-	-	-	-	-	-	-	-	-	-
Light Manufacturing		-	-	P ⁽⁸⁾		-	-	-	-	-	-	-	-	-	-	-	-
Marine Industry		-	-	-	-	-	-	-	-	-	-	-	-	-	-	-	-
Research & Development		-	-	P	P	P	P	P	P	P	-	-	-	-	-	-	-
Testing Labs		-	-	P	-	P	-	P	-	-	-	-	-	-	-	-	-
Trucking & Transportation Terminals		-	-	P	P	-	-	-	-	-	-	-	-	-	-	-	-
Separately Regulated Industrial Uses																	
Artisan Food and Beverage Producer		N					-	-	-	-	L	-	-	-	-	-	-
Cannabis Production Facilities		-	-	-	-	-	-	-	-	-	-	-	-	-	-	-	-
Hazardous Waste Research Facility		-	-	-	-	-	-	-	-	-	-	-	-	-	-	-	-
Hazardous Waste Treatment Facility		-	-	-	-	-	-	-	-	-	-	-	-	-	-	-	-
Marine Related Uses Within the Coastal Overlay Zone		-	-	C	C	C	L	-	C	-	-	-	-	-	-	-	-
Mining and Extractive Industries		-	-	-	-	-	-	-	-	-	-	-	-	-	-	-	-
Newspaper Publishing Plants		-	-	C	C	C	C	-	C ⁽¹⁰⁾	-	-	-	-	-	-	-	-
Processing & Packaging of Plant Products & Animal By-products Grown Off-premises		-	-	-	-	-	-	-	-	-	-	-	-	-	-	-	-
Very Heavy Industrial Uses		-	-	-	-	-	-	-	-	-	-	-	-	-	-	-	-
Wrecking & Dismantling of Motor Vehicles		-	-	-	-	-	-	-	-	-	-	-	-	-	-	-	-
Signs																	
Allowable Signs		P	P	P	P	P	P	P	P	P	P	P	P	P	P	P	P
Separately Regulated Signs Uses																	
Community Entry Signs		L					L	L	L	L	L	L	L	L	L	L	L
Neighborhood Identification Signs		-	-	-	-	-	-	-	-	-	-	-	-	-	-	-	-
Comprehensive Sign Program		N	N	N	N	N	N	N	N	N	N	N	N	N	N	N	N
Revolving Projecting Signs		N	N	N	N	N	N	N	N	N	N	N	N	N	N	N	N
Signs with Automatic Changing Copy		N	N	N	N	N	N	N	N	N	N	N	N	N	N	N	N
Theater Marquees		-	-	N	N	-	-	-	-	-	N	-	-	-	-	-	-

(4-2024)

Use Categories/Subcategories [See Section 131.0112 for an explanation and descriptions of the Use Categories, Subcategories, and Separately Regulated Uses]	Zone Designator		Zones																								
	1st & 2nd >>		CC-																								
	3rd >>		1-			2-			3-			4-			5-												
	4th >>		1	2	3	1	2	3	4	5	4	5	6	7	8	9	1	2	3	4	5	6	1	2	3	4	5
Open Space																											
Active Recreation		-			-			-			-			-													
Passive Recreation		-			-			-			-			-													
Natural Resources Preservation		-			-			-			-			-													
Park Maintenance Facilities		-			-			-			-			-													
Agriculture																											
Agricultural Processing		-			-			-			-			-													
Aquaculture Facilities		-			-			-			-			-													
Dairies		-			-			-			-			-													
Horticulture Nurseries & Greenhouses		-			-			-			-			-													
Raising & Harvesting of Crops		-			-			-			-			-													
Raising, Maintaining & Keeping of Animals		-			-			-			-			-													
Separately Regulated Agriculture Uses																											
Agricultural Equipment Repair Shops		P			P			-			P			P													
Commercial Stables		-			-			-			-			-													
Community Gardens		L			L			L			L			L													
Equestrian Show & Exhibition Facilities		-			-			-			-			-													
Open Air Markets for the Sale of Agriculture-Related Products & Flowers		-			-			-			-			-													
Residential																											
<i>Mobilehome Parks</i>		-			-			-			-			-													
<i>Multiple Dwelling Units</i>		p ⁽²⁾			-			p ⁽²⁾			p ⁽²⁾			p ⁽²⁾													
<i>Rooming House</i> [See Section 131.0112(a)(3)(A)]		P			-			P			P			P													
<i>Shopkeeper Units</i>		P			-			P			P			P													
<i>Single Dwelling Units</i>		-			-			-			-			-													
Separately Regulated Residential Uses																											
<i>Accessory Dwelling Units</i>		L			-			L			L			L													
Continuing Care Retirement Communities		L			-			L			L			L													
Employee Housing:																											
6 or Fewer Employees		-			-			-			-			-													
12 or Fewer Employees		-			-			-			-			-													
Greater than 12 Employees		-			-			-			-			-													
Fraternities and Sororities		C			-			C			C			C													
Garage, Yard, & Estate Sales		-			-			-			-			-													

Use Categories/Subcategories [See Section 131.0112 for an explanation and descriptions of the Use Categories, Subcategories, and Separately Regulated Uses]	Zone Designator		Zones																													
	1st & 2nd >>		CC-																													
	3rd >>		1-			2-			3-			4-			5-																	
	4th >>		1	2	3	1	2	3	4	5	4	5	6	7	8	9	1	2	3	4	5	6	1	2	3	4	5	6				
Guest Quarters	-	-	-	-	-	-	-	-	-	-	-	-	-	-	-	-	-	-	-	-	-	-	-	-	-	-	-	-	-			
Home Occupations	L	-	L	-	L	L	-	L	L	L	L	L	L	L	L	L	L	L	L	L	L	L	L	L	L	L	L	L				
Interim Ground <i>Floor Residential</i>	N ⁽¹⁸⁾	-	N ⁽¹⁸⁾	-	N ⁽¹⁸⁾	N ⁽¹⁸⁾	-	N ⁽¹⁸⁾	N ⁽¹⁸⁾	N ⁽¹⁸⁾	N ⁽¹⁸⁾	N ⁽¹⁸⁾	N ⁽¹⁸⁾	N ⁽¹⁸⁾	N ⁽¹⁸⁾	N ⁽¹⁸⁾	N ⁽¹⁸⁾	N ⁽¹⁸⁾	N ⁽¹⁸⁾	N ⁽¹⁸⁾	N ⁽¹⁸⁾	N ⁽¹⁸⁾	N ⁽¹⁸⁾	N ⁽¹⁸⁾	N ⁽¹⁸⁾	N ⁽¹⁸⁾	N ⁽¹⁸⁾	N ⁽¹⁸⁾				
<i>Junior Accessory Dwelling Units</i>	-	-	-	-	-	-	-	-	-	-	-	-	-	-	-	-	-	-	-	-	-	-	-	-	-	-	-	-				
Live/Work Quarters	L	L	L	L	L	L	L	L	L	L	L	L	L	L	L	L	L	L	L	L	L	L	L	L	L	L	L	L				
Low Barrier Navigation Center	L	-	L	-	L	L	-	L	L	L	L	L	L	L	L	L	L	L	L	L	L	L	L	L	L	L	L	L				
<i>Movable Tiny Houses</i>	-	-	-	-	-	-	-	-	-	-	-	-	-	-	-	-	-	-	-	-	-	-	-	-	-	-	-	-				
<i>Permanent Supportive Housing</i>	L	L	L	L	L	L	L	L	L	L	L	L	L	L	L	L	L	L	L	L	L	L	L	L	L	L	L	L				
Residential Care Facilities:																																
6 or Fewer Persons	P	-	P	-	P	P	-	P	P	P	P	P	P	P	P	P	P	P	P	P	P	P	P	P	P	P	P	P				
7 or More Persons	C	-	C	-	C	C	-	C	C	C	C	C	C	C	C	C	C	C	C	C	C	C	C	C	C	C	C	C				
Student Housing	L	-	L	-	L	L	-	L	L	L	L	L	L	L	L	L	L	L	L	L	L	L	L	L	L	L	L	L				
Transitional Housing:																																
6 or Fewer Persons	P	-	P	-	P	P	-	P	P	P	P	P	P	P	P	P	P	P	P	P	P	P	P	P	P	P	P	P				
7 or More Persons	L	-	L	-	L	L	-	L	L	L	L	L	L	L	L	L	L	L	L	L	L	L	L	L	L	L	L	L				
Watchkeeper Quarters	-	L	-	L	-	-	L	-	-	-	-	-	-	-	-	-	-	-	-	-	-	-	-	-	-	-	-	-				
Institutional																																
Separately Regulated Institutional Uses																																
Airports	C	C	C	C	C	C	C	C	C	C	C	C	C	C	C	C	C	C	C	C	C	C	C	C	C	C	C	C				
Battery Energy Storage Facilities																																
Small Scale (≤ 0.25 acre)	L	L	L	L	L	L	L	L	L	L	L	L	L	L	L	L	L	L	L	L	L	L	L	L	L	L	L	L				
Medium Scale (0.25 acre < 1 acre)	C	C	C	C	C	C	C	C	C	C	C	C	C	C	C	C	C	C	C	C	C	C	C	C	C	C	C	C				
Large Scale (>1 acre)	C	C	C	C	C	C	C	C	C	C	C	C	C	C	C	C	C	C	C	C	C	C	C	C	C	C	C	C				
Botanical Gardens & Arboretums	C	C	C	C	C	C	C	C	C	C	C	C	C	C	C	C	C	C	C	C	C	C	C	C	C	C	C	C				
Cemeteries, Mausoleums, Crematories	C	C	C	C	C	C	C	C	C	C	C	C	C	C	C	C	C	C	C	C	C	C	C	C	C	C	C	C				
Correctional Placement Centers	C	C	C	C	C	C	C	C	C	C	C	C	C	C	C	C	C	C	C	C	C	C	C	C	C	C	C	C				
Educational Facilities:																																
Kindergarten through Grade 12	L	L	L	L	L	L	L	L	L	L	L	L	L	L	L	L	L	L	L	L	L	L	L	L	L	L	L	L				
Colleges / Universities	C	C	-	C	C	C	-	C	C	C	C	C	C	C	C	C	C	C	C	C	C	C	C	C	C	C	C	C				
Vocational / Trade School	P	P	-	P	P	P	-	P	P	P	P	P	P	P	P	P	P	P	P	P	P	P	P	P	P	P	P	P				
Electric Vehicle Charging Stations	L	L	L	L	L	L	L	L	L	L	L	L	L	L	L	L	L	L	L	L	L	L	L	L	L	L	L	L				
Energy Generation & Distribution Facilities	P	C	C	C	C	C	C	C	C	C	C	C	C	C	C	C	C	C	C	C	C	C	C	C	C	C	C	C				
Exhibit Halls & Convention Facilities	C	C	C	C	C	C	C	C	C	C	C	C	C	C	C	C	C	C	C	C	C	C	C	C	C	C	C	C				
<i>Flood Control Facilities</i>	L	L	L	L	L	L	L	L	L	L	L	L	L	L	L	L	L	L	L	L	L	L	L	L	L	L	L	L				
<i>Historical Buildings</i> Used for Purposes Not Otherwise Allowed	C	C	C	C	C	C	C	C	C	C	C	C	C	C	C	C	C	C	C	C	C	C	C	C	C	C	C	C				

Use Categories/Subcategories [See Section 131.0112 for an explanation and descriptions of the Use Categories, Subcategories, and Separately Regulated Uses]	Zone Designator		Zones																																												
	1st & 2nd >>		CC-																																												
	3rd >>		1-			2-			3-			4-			5-																																
	4th >>		1	2	3	1	2	3	4	5	4	5	6	7	8	9	1	2	3	4	5	6	1	2	3	4	5	6	1	2	3	4	5	6													
Homeless Facilities:																																															
Congregate Meal Facilities			C	-	C	C	C																																								
Emergency Shelters			L	-	L	L	L																																								
Homeless Day Centers			C	-	C	C	C																																								
Hospitals, Intermediate Care Facilities & Nursing Facilities			C	C	C	C	C																																								
Interpretive Centers			-	-	-	-	-																																								
Museums			C	C	P	C	C																																								
Major Transmission, Relay, or Communications Switching Stations			C	C	C	C	C																																								
<i>Placemaking</i> on Private Property			L	L	L	L	L																																								
Outdoor Dining on Private Property			L	L	L	L	L																																								
Satellite <i>Antennas</i>			L	L	L	L	L																																								
<i>Social Service Institutions</i>			C	C	C	C	C																																								
Solar Energy Systems			L	L	L	L	L																																								
<i>Wireless Communication Facilities</i>			See Section 141.0420																																												
Retail Sales																																															
Building Supplies & Equipment			p ⁽¹¹⁾	p ⁽¹¹⁾	-	p ⁽¹¹⁾	p ⁽¹¹⁾																																								
Food, Beverages and Groceries			p ⁽¹¹⁾	p ⁽¹¹⁾	p ⁽¹¹⁾	p ⁽¹¹⁾	p ⁽¹¹⁾																																								
Consumer Goods, Furniture, Appliances, Equipment			p ⁽¹¹⁾	p ⁽¹¹⁾	p ⁽¹¹⁾	p ⁽¹¹⁾	p ⁽¹¹⁾																																								
Pets & Pet Supplies			p ⁽¹¹⁾	p ⁽¹¹⁾	p ⁽¹¹⁾	p ⁽¹¹⁾	p ⁽¹¹⁾																																								
Sundries, Pharmaceutical, & Convenience Sales			p ⁽¹¹⁾	p ⁽¹¹⁾	p ⁽¹¹⁾	p ⁽¹¹⁾	p ⁽¹¹⁾																																								
Wearing Apparel & Accessories			p ⁽¹¹⁾	p ⁽¹¹⁾	p ⁽¹¹⁾	p ⁽¹¹⁾	p ⁽¹¹⁾																																								
Separately Regulated Retail Sales Uses																																															
Agriculture Related Supplies & Equipment			-	-	-	P	P																																								
Alcoholic Beverage Outlets			L	L	L	L	L																																								
<i>Cannabis Outlets</i>			-	C	-	-	-																																								
Farmers' Markets																																															
Weekly Farmers' Markets			L	L	L	L	L																																								
Daily Farmers' Market Stands			L	L	L	L	L																																								
Plant Nurseries			P	P	P	P	P																																								
Retail Farms			L	L	L	L	L																																								
Retail Tasting Stores			L	L	L	L	L																																								
Swap Meets & Other Large Outdoor Retail			-	-	-	-	C																																								

Use Categories/Subcategories [See Section 131.0112 for an explanation and descriptions of the Use Categories, Subcategories, and Separately Regulated Uses]	Zone Designator		Zones																																												
	1st & 2nd >>		CC-																																												
	3rd >>		1-			2-			3-			4-			5-																																
	4th >>		1	2	3	1	2	3	4	5	4	5	6	7	8	9	1	2	3	4	5	6	1	2	3	4	5	6	1	2	3	4	5	6													
Facilities																																															
Commercial Services																																															
Building Services			-	-	-	P			P																																						
Business Support			P	P	P	P			P																																						
Eating & Drinking Establishments			p ⁽¹⁶⁾	p ⁽¹⁶⁾	p ⁽¹⁶⁾	p ⁽¹⁶⁾			p ⁽¹⁶⁾																																						
Financial Institutions			P	P	P	P			P																																						
Funeral & Mortuary Services			P	P	P	P			P																																						
Instructional Studios			P	P	P	P			P																																						
Maintenance & Repair			P	P	P	P			P																																						
Off-site Services			-	-	-	P			P																																						
Personal Services			P	P	P	P			P																																						
Radio & Television Studios			P	P	P	P			P																																						
Tasting Rooms			- ⁽¹⁷⁾	- ⁽¹⁷⁾	- ⁽¹⁷⁾	- ⁽¹⁷⁾			- ⁽¹⁷⁾																																						
Visitor Accommodations			P	P	P	P			P																																						
Separately Regulated Commercial Services Uses																																															
<i>Adult Day Care Facility</i>			L	-	L	L			L																																						
Adult Entertainment Establishments:																																															
Adult Book Store			L	L	L	L			L																																						
Adult Cabaret			L	L	L	L			L																																						
Adult Drive-In Theater			L	L	L	L			L																																						
Adult Mini-Motion Picture Theater			L	L	L	L			L																																						
Adult Model Studio			L	L	L	L			L																																						
Adult Motel			L	L	L	L			L																																						
Adult Motion Picture Theater			L	L	L	L			L																																						
Adult Peep Show Theater			L	L	L	L			L																																						
Adult Theater			L	L	L	L			L																																						
Body Painting Studio			L	L	L	L			L																																						
Massage Establishment			L	L	-	-			-																																						
Sexual Encounter Establishment			L	L	L	L			L																																						
Assembly and Entertainment Uses, Including Places of Religious Assembly			L	L	L	L			L																																						
Boarding Kennels/Pet Day Care			L	L	L	L			L																																						
Camping Parks			C	C	C	C			C																																						
<i>Child Care Facilities:</i>																																															
Child Care Centers			L	-	L	L			L																																						

(4-2024)

Use Categories/Subcategories [See Section 131.0112 for an explanation and descriptions of the Use Categories, Subcategories, and Separately Regulated Uses]	Zone Designator	Zones																														
	1st & 2nd >>	CC-																														
	3rd >>	1-			2-			3-			4-			5-			6-			7-			8-			9-						
	4th >>	1	2	3	1	2	3	4	5	4	5	6	7	8	9	1	2	3	4	5	6	1	2	3	4	5	6	1	2	3	4	5
Large Family Child Care Homes	L	-			L			L			L			L			L			L			L			L						
Small Family Child Care Homes	L	-			L			L			L			L			L			L			L			L						
Eating and Drinking Establishments with a Drive-in or Drive-through Component	P	P			C			P			P			P			P			P			P			P						
Fairgrounds	C	C			-			C			C			C			C			C			C			C						
Golf Courses, Driving Ranges, and Pitch & Putt Courses	C	C			C			C			C			C			C			C			C			C						
Helicopter Landing Facilities	C	C			C			C			C			C			C			C			C			C						
Massage Establishments, Specialized Practice	L	L			L			L			L			L			L			L			L			L						
Mobile Food Trucks	L ⁽¹⁵⁾	L ⁽¹⁵⁾			L ⁽¹⁵⁾			L ⁽¹⁵⁾			L ⁽¹⁵⁾			L ⁽¹⁵⁾			L ⁽¹⁵⁾			L ⁽¹⁵⁾			L ⁽¹⁵⁾			L ⁽¹⁵⁾						
Nightclubs & Bars Over 5,000 Square Feet in Size	C	C			C			C			C			C			C			C			C			C						
Parking Facilities as a <i>Primary Use</i> :																																
Permanent Parking Facilities	P	C			P			P			P			P			P			P			P			P						
Temporary Parking Facilities	N	C			N			N			N			N			N			N			N			N						
Private Clubs, Lodges and Fraternal Organizations	P	P			P			P			P			P			P			P			P			P						
Privately Operated, Outdoor Recreation Facilities Over 40,000 Square Feet in Size ⁽⁹⁾	C	C			C			C			C			C			C			C			C			C						
Pushcarts on Private Property	L	L			L			L			L			L			L			L			L			L						
Recycling Facilities:																																
Large Collection Facility	N	N			N			N			N			N			N			N			N			N						
Small Collection Facility	L	L			L			L			L			L			L			L			L			L						
Large Construction & Demolition Debris Recycling Facility	-	-			-			-			-			-			-			-			-			-						
Small Construction & Demolition Debris Recycling Facility	-	-			-			-			-			-			-			-			-			-						
Drop-off Facility	L	L			L			L			L			L			L			L			L			L						
Green Materials Composting Facility	-	-			-			-			-			-			-			-			-			-						
Mixed Organic Composting Facility	-	-			-			-			-			-			-			-			-			-						
Large Processing Facility Accepting at Least 98% of Total Annual Weight of Recyclables from Commercial & Industrial Traffic	-	-			-			-			-			-			-			-			-			-						
Large Processing Facility Accepting All Types of Traffic	-	-			-			-			-			-			-			-			-			-						

Use Categories/Subcategories [See Section 131.0112 for an explanation and descriptions of the Use Categories, Subcategories, and Separately Regulated Uses]	Zone Designator		Zones																													
	1st & 2nd >>		CC-																													
	3rd >>		1-			2-			3-			4-			5-																	
	4th >>		1	2	3	1	2	3	4	5	4	5	6	7	8	9	1	2	3	4	5	6	1	2	3	4	5	6				
Small Processing Facility Accepting at Least 98% of Total Annual Weight of Recyclables From Commercial & Industrial Traffic			-			-			-						C						C											
Small Processing Facility Accepting All Types of Traffic			-			-			-						C						C											
Reverse Vending Machines			L			L			L			L			L			L			L			L			L					
Tire Processing Facility			-			-			-			-			-			-			-			-			-					
Sidewalk Cafes, Streetaries, and Active Sidewalks			L			L			L			L			L			L			L			L			L					
Sports Arenas & Stadiums			C			C			C			C			C			C			C			C			C					
Theaters that are Outdoor or Over 5,000 Square Feet in Size			C			C			C			C			C			C			C			C			C					
Urgent Care Facilities			N			N			N			N			N			N			N			N			N					
Veterinary Clinics & Animal Hospitals			L			L			L			L			L			L			L			L			L					
Zoological Parks			-			-			-			-			-			-			-			-			-					
Offices																																
Business & Professional			P			P			P			P			P			P			P			P			P					
Government			P			P			P			P			P			P			P			P			P					
Medical, Dental & Health Practitioner			P			P			P			P			P			P			P			P			P					
Regional & Corporate Headquarters			P			P			P			P			P			P			P			P			P					
Separately Regulated Office Uses																																
Real Estate Sales Offices & Model Homes			L			-			L			L			L			L			L			L			L					
<i>Sex Offender</i> Treatment & Counseling			L			L			L			L			L			L			L			L			L					
Vehicle & Vehicular Equipment Sales & Service																																
Commercial Vehicle Repair & Maintenance			-			-			-						P			P			P			P			P					
Commercial Vehicle Sales & Rentals			-			-			-						P			P			P			P			P					
Personal Vehicle Repair & Maintenance			P			P			-						P			P			P			P			P					
Personal Vehicle Sales & Rentals			P			P			-						P			P			P			P			P					
Vehicle Equipment & Supplies Sales & Rentals			P			P			-						P			P			P			P			P					
Separately Regulated Vehicle & Vehicular Equipment Sales & Service Uses																																
Automobile Service Stations			N			N			N			N			N			N			N			N			N					

Use Categories/Subcategories [See Section 131.0112 for an explanation and descriptions of the Use Categories, Subcategories, and Separately Regulated Uses]	Zone Designator	Zones																								
	1st & 2nd >>	CC-																								
	3rd >>	1-			2-			3-			4-			5-												
	4th >>	1	2	3	1	2	3	4	5	4	5	6	7	8	9	1	2	3	4	5	6	1	2	3	4	5
Outdoor Storage & Display of New, Unregistered Motor Vehicles as a <i>Primary Use</i>		C			C									C						C						
Vehicle Storage Facilities as a <i>Primary Use</i>		-			-									-						-						
Distribution and Storage																										
Equipment & Materials Storage Yards		-			-									-						-						
Moving & Storage Facilities		-			-									P						P						
Distribution Facilities		-			-									-											p ⁽⁸⁾	
Separately Regulated Distribution and Storage Uses																										
Junk Yards		-			-									-						-						
Temporary Construction Storage Yards Located Off-site		L			L									L						L						
Industrial																										
Heavy Manufacturing		-			-									-						-						
Light Manufacturing		-			-									-											p ⁽⁸⁾	
Marine Industry		-			-									-						-						
Research & Development		P			P									-						P					P	
Testing Labs		-			P									-						-					-	
Trucking & Transportation Terminals		-			-									-						-					-	
Separately Regulated Industrial Uses																										
Artisan Food and Beverage Producer		L			L									L						L					L	
<i>Cannabis Production Facilities</i>		-			-									-						-					-	
<i>Hazardous Waste</i> Research Facility		-			-									-						-					-	
<i>Hazardous Waste</i> Treatment Facility		-			-									-						-					-	
Marine Related Uses Within the Coastal Overlay Zone		C			C									C						C					C	
Newspaper Publishing Plants		C			C									C						C					P	
Processing & Packaging of Plant Products & Animal By-products Grown Off-premises		-			-									-						-					-	
Very Heavy Industrial Uses		-			-									-						-					-	
Wrecking & Dismantling of Motor Vehicles		-			-									-						-					-	
Signs																										
Allowable Signs		P			P									P						P					P	
Separately Regulated Signs Uses																										
Community Entry <i>Signs</i>		L			L									L						L					L	

Use Categories/Subcategories [See Section 131.0112 for an explanation and descriptions of the Use Categories, Subcategories, and Separately Regulated Uses]	Zone Designator	Zones																								
	1st & 2nd >>	CC-																								
	3rd >>	1-			2-			3-			4-			5-												
	4th >>	1	2	3	1	2	3	4	5	4	5	6	7	8	9	1	2	3	4	5	6	1	2	3	4	5
Neighborhood Identification <i>Signs</i>	-	-	-	-	-	-	-	-	-	-	-	-	-	-	-	-	-	-	-	-	-	-	-	-	-	
Comprehensive <i>Sign</i> Program	N	N	N	N	N	N	N	N	N	N	N	N	N	N	N	N	N	N	N	N	N	N	N	N	N	
Revolving <i>Projecting Signs</i>	N	N	N	N	N	N	N	N	N	N	N	N	N	N	N	N	N	N	N	N	N	N	N	N	N	
<i>Signs</i> with Automatic Changing Copy	N	N	N	N	N	N	N	N	N	N	N	N	N	N	N	N	N	N	N	N	N	N	N	N	N	
Theater <i>Marquees</i>	N	N	N	N	N	N	N	N	N	N	N	N	N	N	N	N	N	N	N	N	N	N	N	N	N	

Footnotes for Table 131-05B

- ¹ Uses shall not begin operating before 6:00 a.m. or continue operating later than 12:00 midnight in Commercial-Neighborhood (CN) zones.
- ² See Section 131.0540.
- ³ Only office furniture, appliances, and equipment establishments are permitted. The *gross floor area* occupied by these uses shall not exceed 2,500 square feet for each *premises*.
- ⁴ Live entertainment after 12:00 midnight is not permitted in the Commercial-Neighborhood (CN) zones, unless approval of a deviation is granted with a Planned Development Permit in accordance with Section 126.0602(b)(1). All uses or activities shall be conducted entirely within an enclosed building and front onto the primary street with no uses or commercial activities conducted outdoors in the rear *yard* adjacent to residentially-zoned properties.
- ⁵ The sale of alcoholic beverages is not permitted as a *primary use*.
- ⁶ The *gross floor area* occupied by these uses shall not exceed 2,500 square feet for each *premises*.
- ⁷ Hiring halls are not permitted.
- ⁸ These activities shall be located solely within an enclosed building that does not exceed 7,500 square feet of *gross floor area*. Activities that would require a permit from the Hazardous Materials Management Division of the County of San Diego or from the San Diego Air Pollution Control District are not permitted.
- ⁹ The 40,000 square feet includes all indoor and outdoor areas that are devoted to the recreational use; it does not include customer parking areas.

(4-2024)

- ¹⁰ This use is not allowed within the Coastal Overlay Zone, except that assembly and entertainment uses may be incorporated as an *accessory use* to visitor accommodations.
- ¹¹ *Development of a large retail establishment* is subject to Section 143.0302.
- ¹² Within the Coastal Overlay Zone, instructional studios are not permitted on the ground *floor* in the CV-1-1 or CV-1-2 zone.
- ¹³ Permitted in CV zones where the *gross floor area* occupied by an individual retail sales establishment would not exceed 2,500 square feet.
- ¹⁴ Specialized practice massage establishments are permitted only as an *accessory use* in the CV-1-1 and CV-1-2 zones.
- ¹⁵ This use is permitted as a limited use subject to a mobile food truck permit in accordance with Section 123.0603 and the limited use regulations in Section 141.0612.
- ¹⁶ Eating and drinking establishments abutting residential *development* located in a residential zone may operate only between 6:00 a.m. and 12:00 midnight. All uses or activities shall be conducted entirely within an enclosed building and front onto the primary street with no uses or commercial activities conducted outdoors in the rear *yard* adjacent to residentially-zoned properties.
- ¹⁷ Tasting rooms are only permitted as an *accessory use* to a beverage manufacturing plant.
- ¹⁸ This use is not allowed within the Coastal Overlay Zone.
- ¹⁹ See Section 131.0541.

(Amended 6-12-2001 by O-18948 N.S.; effective 12-12-2001.)

(Amended 3-1-2006 by O-19467 N.S.; effective 8-10-2006.)

(Amended 8-10-2004 by O-19308 N.S.; effective 4-11-2007.)

(Amended 6-15-2007 by O-19624 N.S.; effective 7-15-2007.)

(Amended 4-23-2008 by O-19739 N.S.; effective 5-23-2008.)

(Amended 11-13-08 by O-19799 N.S.; effective 12-13-2008.)

(Amended 11-13-08 by O-19803 N.S.; effective 12-13-2008.)

(Amended 11-13-08 by O-19804 N.S.; effective 12-13-2008.)

(Amended 7-6-2011 by O-20065 N.S.; effective 8-5-2011.)

(Amended 8-4-2011 by O-20081 N.S.; effective 10-6-2011.)

(Amended 2-22-2012 by O-20141 N.S.; effective 3-23-2012.)

(Amended 6-18-2013 by O-20261 N.S.; effective 7-19-2013.)

(Retitled to "Use Regulations Table for Commercial Zones" and amended 3-25-2014 by O-20356 N.S.; effective 4-24-2014.)

(Amended 4-3-2014 by O-20357 N.S.; effective 10-15-2014.)

(Amended 5-5-2015 by O-20481 N.S.; effective 6-4-2015.)

(Amended 7-10-2015 by O-20512 N.S.; effective 8-9-2015.)
(Amended 8-7-2015 by O-20555 N.S.; effective 9-6-2015.)
(Amended 4-5-2016 by O-20634 N.S.; effective 5-5-2016.)
(Amended 8-4-2016 by O-20704 N.S.; effective 8-27-2016.)
(Amended 12-1-2016 by O-20752 N.S.; effective 12-31-2016.)
(Amended 2-22-2017 by O-20793 N.S.; effective 4-12-2017.)
(Amended 9-15-2017 by O-20857 N.S.; effective 10-15-2017.)
(Amended 10-17-2017 by O-20859 N.S.; effective 11-16-2017.)
(Amended 3-22-2018 by O-20917 N.S.; effective 4-21-2018.)
(Amended 5-22-2018 by O-20928 N.S.; effective 6-21-2018.)
(Amended 9-18-2018 by O-20985 N.S.; effective 10-18-18.)
(Amended 10-10-2018 by O-20991 N.S.; effective 11-9-2018.)

[Editors Note: Amendments as adopted by O-20991 N.S. will not apply within the Coastal Overlay Zone until the California Coastal Commission certifies O-20991 N.S. as a Local Coastal Program Amendment.
Click the link to view the Strikeout Ordinance highlighting changes to prior language http://docs.sandiego.gov/municode_strikeout_ord/O-20991-SO.pdf]

(Amended 8-9-2019 by O-21114 N.S. and O-21117 N.S.; effective 9-8-2019.)
(Amended 1-8-2020 by O-21163 N.S. and O-21164 N.S.; effective 2-9-2020.)
(Amended 8-12-2020 by O-21223 N.S.; effective 10-8-2020.)
(Amended 10-30-2020 by O-21254 N.S.; effective 11-29-2020.)
(Amended 2-1-2021 by O-21288 N.S.; effective 3-3-2021.)
(Amended 4-14-2021 by O-21305 N.S.; effective 5-29-2021.)
(Amended 11-23-2021 by O-21391 N.S.; effective 1-6-2022.)
(Amended 1-27-2022 by O-21416 N.S.; effective 2-26-2022.)
(Amended 5-23-2022 by O-21458 N.S.; effective 6-22-2022.)
(Amended 3-7-2023 by O-21618 N.S.; effective 5-6-2023.)

[Editors Note: Amendments as adopted by O-21618 N.S. will not apply within the Coastal Overlay Zone until the California Coastal Commission certifies it as a Local Coastal Program Amendment.
Click the link to view the Strikeout Ordinance highlighting changes to prior language http://docs.sandiego.gov/municode_strikeout_ord/O-21618-SO.pdf]

(Amended 1-16-2024 by O-21758 N.S.; effective 3-16-2024.)

[Editors Note: Amendments as adopted by O-21758 N.S. will not apply within the Coastal Overlay Zone until the California Coastal Commission certifies it as a Local Coastal Program Amendment.

Click the link to view the Strikeout Ordinance highlighting changes to prior language http://docs.sandiego.gov/municode_strikeout_ord/O-21758-SO.pdf]

§131.0530 Development Regulations of Commercial Zones

- (a) Within the commercial zones, no *structure* or improvement shall be constructed, established, or altered, nor shall any *premises* be used unless the *premises* complies with the regulations and standards in this division and with any applicable development regulations in Chapter 13, Article 2 (Overlay Zones) and Chapter 14 (General and Supplemental Regulations).
- (b) A Neighborhood Development Permit or Site Development Permit is required for the types of *development* identified in Table 143-03A.
- (c) The regulations in this division apply to all proposed *development* in the commercial base zones whether or not a permit or other approval is required except where specifically identified.

(Added 12-9-1997 by O-18451 N.S.; amended 10-18-1999 by O-18691 N.S.; effective 1-1-2000.)

§131.0531 Development Regulations Tables for Commercial Zones

The following development regulations apply in each of the commercial zones as shown in Tables 131-05C, 131-05D, and 131-05E.

- (a) CN Zones

**Table 131-05C
Development Regulations for CN Zones**

Development Regulations [See Section 131.0530 for Development Regulations of Commercial Zones]	Zone Designator	Zones					
	1st & 2nd >>	CN-					
	3rd >>>	1-	1-	1-	1-	1-	1-
	4th >>>	1	2	3	4	5	6
Max Permitted Residential Density⁽¹⁾		3,000	1,500	1,500	1,000	600	800
Supplemental Residential Regulations [See Section 131.0540]		applies	applies	applies	applies	applies	applies
Lot Area							
Min Lot Area (sf)		2,500	5,000	5,000	2,500	2,500	2,500
Max Lot Area (ac)		0.3	10	10	0.3	0.3	0.3
Lot Dimensions							
Min Lot Width (ft)		25	50	50	25	25	25
Min Street Frontage (ft)		25	50	50	25	25	25
Min Lot Depth (ft)		100	--	--	--	--	--
Setback Requirements⁽⁴⁾							
Min Front Setback (ft)		--	--	--	--	--	--
Max Front Setback (ft) [See Section 131.0543(a)]		10 ⁽²⁾	--	10 ⁽²⁾	10 ⁽²⁾	10 ⁽²⁾	10 ⁽²⁾
Min Side Setback (ft)		10	10	10	10	10	10
Optional Side Setback (ft) [See Section 131.0543(b)]		0	0	0	0	0	0
Side Setback Abutting Residential [See Section 131.0543(c)]		applies	applies	applies	applies	applies	applies
Min Street Side Setback (ft)		--	--	--	--	--	--
Max Street Side Setback (ft) [See Section 131.0543(a)]		10 ⁽²⁾	--	10 ⁽²⁾	10 ⁽²⁾	10 ⁽²⁾	10 ⁽²⁾
Min Rear Setback (ft)		10	10	10	10	10	10
Optional Rear Setback (ft) [See Section 131.0543(b)]		0	0	0	0	0	0
Rear Setback Abutting Residential [See Section 131.0543(c)]		applies	applies	applies	applies	applies	applies
Max Structure Height (ft)		30	30	30	65	65	65

(4-2024)

Development Regulations [See Section 131.0530 for Development Regulations of Commercial Zones]	Zone Designator	Zones					
	1st & 2nd >>	CN-					
	3rd >>	1-	1-	1-	1-	1-	1-
	4th >>	1	2	3	4	5	6
Max Floor Area Ratio		1.0 ⁽³⁾	1.0 ⁽³⁾	1.0 ⁽³⁾	1.0 ⁽³⁾	1.0 ⁽³⁾	1.0 ⁽³⁾
<i>Floor Area Ratio</i> Bonus for Residential Mixed Use [See Section 131.0546(a)]		0.5	0.75	0.75	1.2	1.2	1.2
<i>Minimum Floor Area Ratio</i> for Residential Use		0.5	0.38	0.38	0.6	0.6	0.6
Ground-floor Height [See Section 131.0548]		--	--	--	applies	applies	applies
Pedestrian Paths [See Section 131.0550]		applies	applies	applies	applies	applies	applies
Transparency [See Section 131.0552]		applies	--	applies	applies	applies	applies
Building Articulation [See Section 131.0554]		applies	applies	applies	applies	applies	applies
Refuse and Recyclable Material Storage [See Section 142.0805]		applies	applies	applies	applies	applies	applies
Loading Dock and Overhead Door Screening Regulations [See Section 142.1030]		applies	applies	applies	applies	applies	applies
Visibility Area [See Section 113.0273]		applies	applies	applies	applies	applies	applies
Dwelling Unit Protection Regulations [See Chapter 14, Article 3, Division 12]		applies	applies	applies	applies	applies	applies

Footnotes for Table 131-05C

- 1 One dwelling unit per specified minimum square footage of lot area as determined in accordance with Section 113.0222.
- 2 See Section 131.0543(a)(2).
- 3 Within the Otay Mesa Community Plan area, the maximum *floor area ratio* is 0.30.
- 4 *Placemaking* on private property shall not be subject to *setback* regulations, in accordance with Section 141.0421.

(b) CR, CO, CV, and CP Zones

Table 131-05D
Development Regulations for CR, CO, CV, CP Zones

Development Regulations [See Section 131.0530 for Development Regulations of Commercial Zones]	Zone Designator	Zones										
	1st & 2nd >>	CR-	CO-						CV-		CP-	
	3rd >>	1- 2-	1-		2-		3-		1-		1-	
	4th >>	1	1	2	1-	2-	1	2	3	1	2	1
Max Permitted Residential Density ⁽¹⁾		1,500	1,000	1,500	-	-	1,000	800	600	1,500	1,500	--
Supplemental Residential Regulations [See Section 131.0540]		applies	applies	applies	applies	applies	applies	applies	applies	applies	applies	--
Supplemental Commercial Regulations [See Section 131.0541]		--	--	--	--	--	applies	--	--	--	--	--
Lot Area												
Min Lot Area (sf)		15,000	5,000	5,000	5,000	5,000	5,000	5,000	5,000	15,000	5,000	--
Max Lot Area (ac)		--	--	--	--	--	--	--	--	--	--	--
Lot dimensions												
Min Lot Width (ft)		100	50	50	50	50	50	50	50	100	50	--
Min Street Frontage (ft)		100	50	50	50	50	50	50	50	100	50	--
Min Lot Depth (ft)		100	100	100	100	100	100	100	100	100	100	--
Setback Requirements ⁽⁵⁾												
Min Front Setback (ft)		10	10	10	10	10	--	--	--	10	--	10
Max Front Setback (ft)		--	25 ⁽²⁾	--	25 ⁽²⁾	--	10 ⁽²⁾	10 ⁽²⁾	10 ⁽²⁾	--	10 ⁽²⁾	--
[See Section 131.0543(a)]												
Min Side Setback (ft)		10	10	10	10	10	10	10	10	10	10	10
Optional Side Setback (ft)		--	0 ⁽³⁾	0 ⁽³⁾	0 ⁽³⁾	0 ⁽³⁾	0	0	0	--	0 ⁽³⁾	--
Side Setback Abutting Residential [See Section 131.0543(c)]		applies	applies	applies	applies	applies	applies	applies	applies	applies	applies	applies
Min Street Side Setback (ft)		10	10	10	10	10	--	--	--	--	--	--
Max Street Side Setback (ft)		--	25 ⁽²⁾	--	25 ⁽²⁾	--	10 ⁽²⁾	10 ⁽²⁾	10 ⁽²⁾	10 ⁽²⁾	10 ⁽²⁾	--
[See Section 131.0543(a)]												

Min Rear <i>Setback</i> (ft) Optional Rear <i>Setback</i> (ft)	10 --	10 0 ⁽³⁾	10 0 ⁽³⁾	10 0 ⁽³⁾	10 0 ⁽³⁾	10 0 ⁽³⁾	10 0 ⁽³⁾	10 0 ⁽³⁾	10 0 ⁽³⁾	10 0 ⁽³⁾	10 0 ⁽³⁾
Rear <i>Setback</i> Abutting Residential [See Section 131.0543(c)]	applies	applies	applies	applies	applies	applies	applies	applies	applies	applies	applies
Max Structure Height (ft)	60	45	60	45	65	50	65	70	60	45	30
Min Lot Coverage (%)	--	--	--	--	--	--	--	--	--	35	--
Max Floor Area Ratio	1.0 ⁽⁴⁾	0.75 ⁽⁴⁾	1.5 ⁽⁴⁾	0.75 ⁽⁴⁾	1.5 ⁽⁴⁾	2.0 ⁽⁴⁾	2.0 ^(4,5)	2.0 ⁽⁴⁾	2.0 ⁽⁴⁾	2.0 ⁽⁴⁾	1.0 ⁽⁴⁾
<i>Floor Area Ratio</i> Bonus for Residential Mixed Use [See Section 131.0546(a)]	1.0	1.0	1.5	---	---	1.0	2.5	2.5	--	--	--
Minimum <i>Floor Area Ratio</i> for Residential Use	0.5	1.0	0.75	---	---	1.0	1.5	2.5	--	--	--
<i>Floor Area Ratio</i> Bonus for Child Care [See Section 131.0546(b)]	applies	--	applies	--	applies	applies	applies	applies	--	--	--
Ground-floor Height [See Section 131.0548]	applies	applies	applies	applies	applies	applies	applies	applies	applies	applies	--
Pedestrian Paths [See Section 131.0550]	applies	applies	applies	applies	applies	applies	applies	applies	applies	applies	--
Transparency [See Section 131.0552]	--	applies	--	applies	--	applies	applies	applies	--	applies	--
Building Articulation [See Section 131.0554]	applies	applies	applies	applies	applies	applies	applies	applies	applies	applies	--
Street Yard Parking Restriction [See Section 131.0555]	--	applies	--	applies	--	applies	applies	applies	--	--	--
Parking Lot Orientation [See Section 131.0556]	applies	--	applies	--	applies	applies	--	--	applies	applies	--
Refuse and Recyclable Material Storage [See Section 142.0805]	applies	applies	applies	applies	applies	applies	applies	applies	applies	applies	applies
Loading Dock and Overhead Door Screening Regulations [See Section 142.1030]	applies	applies	applies	applies	applies	applies	applies	applies	applies	applies	applies
Visibility Area [See Section 113.0273]	applies	applies	applies	applies	applies	applies	applies	applies	applies	applies	applies
Dwelling Unit Protection Regulations [See Chapter 14, Article 3, Division 12]	applies	applies	applies	applies	applies	applies	applies	applies	applies	applies	-

Footnotes for Table 131-05D

- ¹ One dwelling unit per specified minimum square footage of lot area as determined in accordance with Section 113.0222.
- ² See section 131.0543(a)(2).

- ³ See section 131.0543(b).
- ⁴ Within the Otay Mesa Community Plan area, the maximum *floor area ratio* is 0.30.
- ⁵ *Placemaking* on private property shall not be subject to *setback* or minimum *lot coverage* regulations, in accordance with Section 141.0421.

(c) CC Zones

**Table 131-05E
Development Regulations for CC Zones**

Development Regulation [See Section 131.0530 for Development Regulations of Commercial Zones]	Zone Designator	Zones															
	1st & 2nd >>	CC-															
	3rd >>	1-	2-	4-	5-	1-	2-	4-	5-	1-	2-	4-	5-	2-	3-	4-	5-
	4th >>	1			2			3			4						
Max Permitted Residential Density⁽¹⁾		1,500			1,500			1,500			1,500						
Supplemental Residential Regulations [See Section 131.0540]		applies			applies			applies			applies						
Lot Area																	
Min Lot Area (sq. ft.)		5,000			5,000			5,000			2,500						
Max Lot Area (ac)		--			--			--			--						
Lot Dimensions																	
Min Lot Width (ft)		50			50			100			25						
Min Street Frontage (ft)		50			50			100			25						
Min Lot Depth (ft)		100			100			--			--						
Max Lot Depth (ft)		150			150			--			--						
Setback Requirements⁽⁵⁾																	
Min Front Setback (ft)		--			--			--			--						
Max Front Setback (ft) [See Section 131.0543(a)]		100 ^(2,3)			100 ^(2,3)			--			10 ⁽²⁾						
Min Side Setback (ft)		10			10			10			10						
Optional Side Setback (ft) [See Section 131.0543(b)]		0			0			0			0						
Side Setback Abutting Residential [See Section 131.0543(c)]		applies			applies			applies			applies						
Min Street Side Setback (ft)		--			--			--			--						
Max Street Side Setback (ft) [See Section 131.0543(a)]		--			--			--			10 ⁽²⁾						
Min Rear Setback (ft)		10			10			10			10						
Optional Rear Setback (ft) [See Section 131.0543(b)]		0			0			0			0						

(4-2024)

Development Regulation [See Section 131.0530 for Development Regulations of Commercial Zones]	Zone Designator	Zones															
	1st & 2nd >>	CC-															
	3rd >>	1-	2-	4-	5-	1-	2-	4-	5-	1-	2-	4-	5-	2-	3-	4-	5-
	4th >>	1				2				3				4			
Rear <i>Setback</i> Abutting Residential [See Section 131.0543(c)]		applies				applies				applies				applies			
Max Structure Height (ft)		30				60				45				30			
Min Lot Coverage (%) ⁽⁵⁾		--				--				--				35			
Max Floor Area Ratio		0.75 ⁽⁴⁾				2.0 ⁽⁴⁾				0.75 ⁽⁴⁾				1.0 ⁽⁴⁾			
<i>Floor Area Ratio</i> Bonus for Residential Mixed Use [See Section 131.0546(a)]		0.75				--				0.75				0.5			
Minimum <i>Floor Area Ratio</i> for Residential Use		0.56				--				0.56				0.25			
Ground-floor Height [See Section 131.0548]		--				applies				applies				--			
Pedestrian Paths [See Section 131.0550]		applies				applies				applies				applies			
Transparency [See Section 131.0552]		---				---				---				applies			
Building Articulation [See Section 131.0554]		applies				applies				applies				applies			
Parking Lot Orientation [See Section 131.0556]		applies				applies				applies				applies			
Refuse and Recyclable Material Storage [See Section 142.0805]		applies				applies				applies				applies			
Loading Dock and Overhead Door Screening Regulations [See Section 142.1030]		applies				applies				applies				applies			
Visibility Area [See Section 113.0273]		applies				applies				applies				applies			
Dwelling Unit Protection Regulations [See Chapter 14, Article 3, Division 12]		applies				applies				applies				applies			

Development Regulation [See Section 131.0530 for Development Regulations of Commercial Zones]	Zone Designator	Zones														
	1st & 2nd >>	CC														
	3rd >>	2-	3-	4-	5-	3-	4-	5-	3-	3-	3-					
	4th >>	5					6			7	8	9				
Max permitted Residential Density ⁽¹⁾		1,500					1,000			800	600	400				
Supplemental Residential Regulations [See Section 131.0540]		applies					applies			applies	applies	applies				
Lot Area																
Min <i>Lot Area</i> (sq. ft.)		2,500					2,500			2,500	2,500	2,500				
Max <i>Lot Area</i> (ac)		--					--			--	--	--				
Lot Dimensions																
Min <i>Lot Width</i> (ft)		25					25			25	25	25				
Min <i>Street Frontage</i> (ft)		25					25			25	25	25				

Development Regulation [See Section 131.0530 for Development Regulations of Commercial Zones]	Zone Designator	Zones									
	1st & 2nd >>	CC									
	3rd >>	2-	3-	4-	5-	3-	4-	5-	3-	3-	3-
	4th >>	5			6			7		8	9
Min <i>Lot</i> Depth (ft)		--				--			--		--
Max <i>Lot</i> Depth (ft)		--				--			--		--
Setback Requirements⁽⁵⁾											
Min Front <i>Setback</i> (ft)		--				--			--		--
Max Front <i>Setback</i> (ft) [See Section 131.0543(a)]		10 ⁽²⁾				10 ⁽²⁾			10 ⁽²⁾		10 ⁽²⁾
Min Side <i>Setback</i> (ft)		10				10			10		10
Optional Side <i>Setback</i> (ft) [See Section 131.0543(b)]		0				0			0		0
Side <i>Setback</i> Abutting Residential [See Section 131.0543(c)]		applies				applies			applies		applies
Min <i>Street Side Setback</i> (ft)		--				--			--		--
Max <i>Street Side-Setback</i> (ft) [See Section 131.0543(a)]		10 ⁽²⁾				10 ⁽²⁾			10 ⁽²⁾		10 ⁽²⁾
Min Rear <i>Setback</i> (ft)		10				10			10		10
Optional Rear <i>Setback</i> (ft) [See Section 131.0543(b)]		0				0			0		0
Rear <i>Setback</i> Abutting Residential [See Section 131.0543(c)]		applies				applies			applies		applies
Max Structure Height (ft)		100				65			65		100
Min Lot Coverage (%) ^(4,5)		35				35			35		35
Max Floor Area Ratio		2.0 ⁽⁴⁾				2.0 ⁽⁴⁾			2.0 ⁽⁴⁾		2.0 ⁽⁴⁾
<i>Floor Area Ratio</i> Bonus for Residential Mixed Use [See Section 131.0546(a)]		2.0				2.0			2.5		3.0
Minimum <i>Floor Area Ratio</i> for Residential Use		1.0				1.0			1.5		2.0
Ground-floor Height [See Section 131.0548]		applies				applies			applies		applies
Pedestrian Paths [See Section 131.0550]		applies				applies			applies		applies
Transparency [See Section 131.0552]		applies				applies			applies		applies
Building Articulation [See Section 131.0554]		applies				applies			applies		applies
Parking Lot Orientation [See Section 131.0556]		-				-			-		-
Refuse and Recyclable Material Storage [See Section 142.0805]		applies				applies			applies		applies
Loading Dock and Overhead Door Screening Regulations [See Section 142.1030]		applies				applies			applies		applies
Visibility Area [See Section 113.0273]		applies				applies			applies		applies
Dwelling Unit Protection Regulations [See Chapter 14, Article 3, Division 12]		applies				applies			applies		applies

Footnotes for Table 131-05E

- ¹ One dwelling unit per specified minimum square feet of lot area as determined in accordance with Section 113.0222.
- ² See Section 131.0543(a)(2).
- ³ See Section 131.0543(a)(3).
- ⁴ Within the Otay Mesa Community Plan area, the maximum *floor area ratio* is 0.30.
- ⁵ *Placemaking* on private property shall not be subject to *setback* or minimum *lot coverage* regulations, in accordance with Section 141.0421.

(Amended 6-12-2001 by O-18948 N.S.; effective 12-12-2001.)

(Amended 11-13-08 by O-19799 N.S.; effective 12-13-2008.)

(Amended 8-4-2011 by O-20081 N.S.; effective 10-6-2011.)

(Amended 4-11-2014 by O-20361 N.S.; effective 5-18-2014.)

(Retitled from “Development Regulations Tables of Commercial Zones” to “Development Regulations Tables for Commercial Zones” and amended 7-10-2015 by O-20512 N.S.; effective 8-9-2015.)

(Amended 4-5-2016 by O-20634 N.S.; effective 5-5-2016.)

(Amended 12-1-2016 by O-20752 N.S.; effective 12-31-2016.)

(Amended 5-22-2018 by O-20928 N.S.; effective 6-21-2018.)

(Amended 10-10-2018 by O-20991 N.S.; effective 11-9-2018.)

[Editors Note: Amendments as adopted by O-20991 N.S. will not apply within the Coastal Overlay Zone until the California Coastal Commission certifies O-20991 N.S. as a Local Coastal Program Amendment.

Click the link to view the Strikeout Ordinance highlighting changes to prior language http://docs.sandiego.gov/municode_strikeout_ord/O-20991-SO.pdf]

(Amended 10-30-2020 by O-21254 N.S.; effective 11-29-2020.)

(Amended 12-9-2020 by O-21273 N.S.; effective 1-8-2021.)

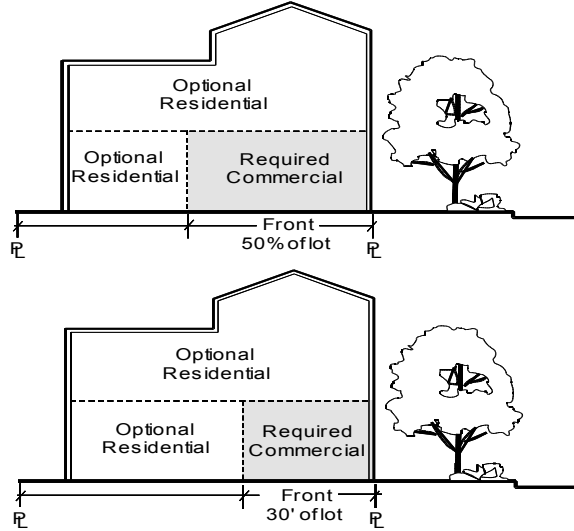
§131.0540 Maximum Permitted Residential Density and Other Residential Regulations

The following regulations apply to residential *development* within commercial zones where indicated in Table 131-05B:

- (a) Residential *Development* as a Permitted Use. Residential *development* is permitted in commercial zones only where it is identified in Table 131-05B.
- (b) Mixed-Use or Multi-Use Requirement. Residential *development* is permitted only when a commercial *structure* exists on the *premises* or is a part of the proposed *development*.
- (c) Ground *Floor* Restrictions.
 - (1) Residential use and residential parking are prohibited on the ground *floor* in the front half of the *lot*, except in the CC-3-4, CC-3-5, CC-3-6, CC-3-7, CC-3-8, CC-3-9, CC-4-4, CC-4-5, CC-4-6, CC-5-4, CC-5-5, CC-5-6, CN-1-6, CO-3-1, and CV-1-2 zones, where these uses are prohibited on the ground *floor* in the front 30 feet of the lot as shown in Diagram 131-05A. In the CN-1-6 and CO-3-1 zones, residential use and residential parking are limited to 70 percent of the *street frontage* along the front *property line*. Interim ground *floor residential* uses may be permitted with a Neighborhood Use Permit in accordance with Section 141.0309.

Diagram 131-05A

Ground Floor Restriction



- (2) Within the Coastal Overlay Zone
 - (A) Required parking cannot occupy more than 50 percent of the ground floor in the CV-1-1 or CV-1-2 zones.
 - (B) Residential uses are not permitted on the ground floor.
- (d) Residential *Development*. Where residential *development* is permitted, the development regulations of the RM-1-1, RM-2-5, RM-3-7, RM-3-8, RM-3-9, and RM-4-10 zones apply as appropriate according to the maximum permitted residential *density*, except that the *lot area*, *lot dimensions*, *setback*, *floor area ratio*, and *structure height* requirements of the applicable commercial zone apply.

(Added 12-9-1997 by O-18451 N.S.)
(Amended 10-18-1999 by O-18691 N.S.; effective 1-1-2000.)
(Amended 11-28-2005 by O-19444 N.S.; effective 2-9-2006.)
(Amended 3-1-2006 by O-19467 N.S.; effective 8-10-2006.)
(Amended 6-18-2013 by O-20261 N.S.; effective 7-19-2013.)
(Amended 5-5-2015 by O-20481 N.S.; effective 6-4-2015.)
(Amended 7-10-2015 by O-20512 N.S.; effective 8-9-2015.)
(Amended 3-22-2018 by O-20917 N.S.; effective 4-21-2018.)
(Amended 10-10-2018 by O-20991 N.S.; effective 11-9-2018.)

[Editors Note: Amendments as adopted by O-20991 N.S. will not apply within the Coastal Overlay Zone until the California Coastal Commission certifies O-20991 N.S. as a Local Coastal Program Amendment. Click the link to view the Strikeout Ordinance highlighting changes to prior language http://docs.sandiego.gov/municode_strikeout_ord/O-20991-SO.pdf]

(Amended 8-9-2019 by O-21114 N.S.; effective 9-8-2019.)

[Editors Note: Amendments as adopted by O-21114 N.S. will not apply within the Coastal Overlay Zone until the California Coastal Commission certifies it as a Local Coastal Program Amendment. Click the link to view the Strikeout Ordinance highlighting changes to prior language http://docs.sandiego.gov/municode_strikeout_ord/O-21114-SO.pdf]

(Amended 2-1-2021 by O-21288 N.S.; effective 3-3-2021.)

(Amended 4-14-2021 by O-21305 N.S.; effective 5-29-2021.)

§131.0541 Supplemental Commercial Regulations for CO Zones

The following regulations apply to commercial *development* within commercial office zones where indicated in Table 131-05D:

- (a) The *gross floor area* occupied by retail sales uses shall not exceed 10 percent of the total *gross floor area* on each *premises*, and the *gross floor area* of each individual retail establishment shall not exceed 15,000 square feet.
- (b) A minimum of 25 percent of *gross floor area* on each *premises* shall be occupied by uses in the office use category or the research and development use subcategory.
- (c) For phased *development*, all or a portion of the required office or research and development use shall be constructed prior to or in the same phase as the *development* of residential use.

(“Supplemental Commercial Regulations for CO Zones” added 10-10-2018 by O-20991 N.S.; effective 11-9-2018.)

[Editors Note: Amendments as adopted by O-20991 N.S. will not apply within the Coastal Overlay Zone until the California Coastal Commission certifies O-20991 N.S. as a Local Coastal Program Amendment. Click the link to view the Strikeout Ordinance highlighting changes to prior language http://docs.sandiego.gov/municode_strikeout_ord/O-20991-SO.pdf]

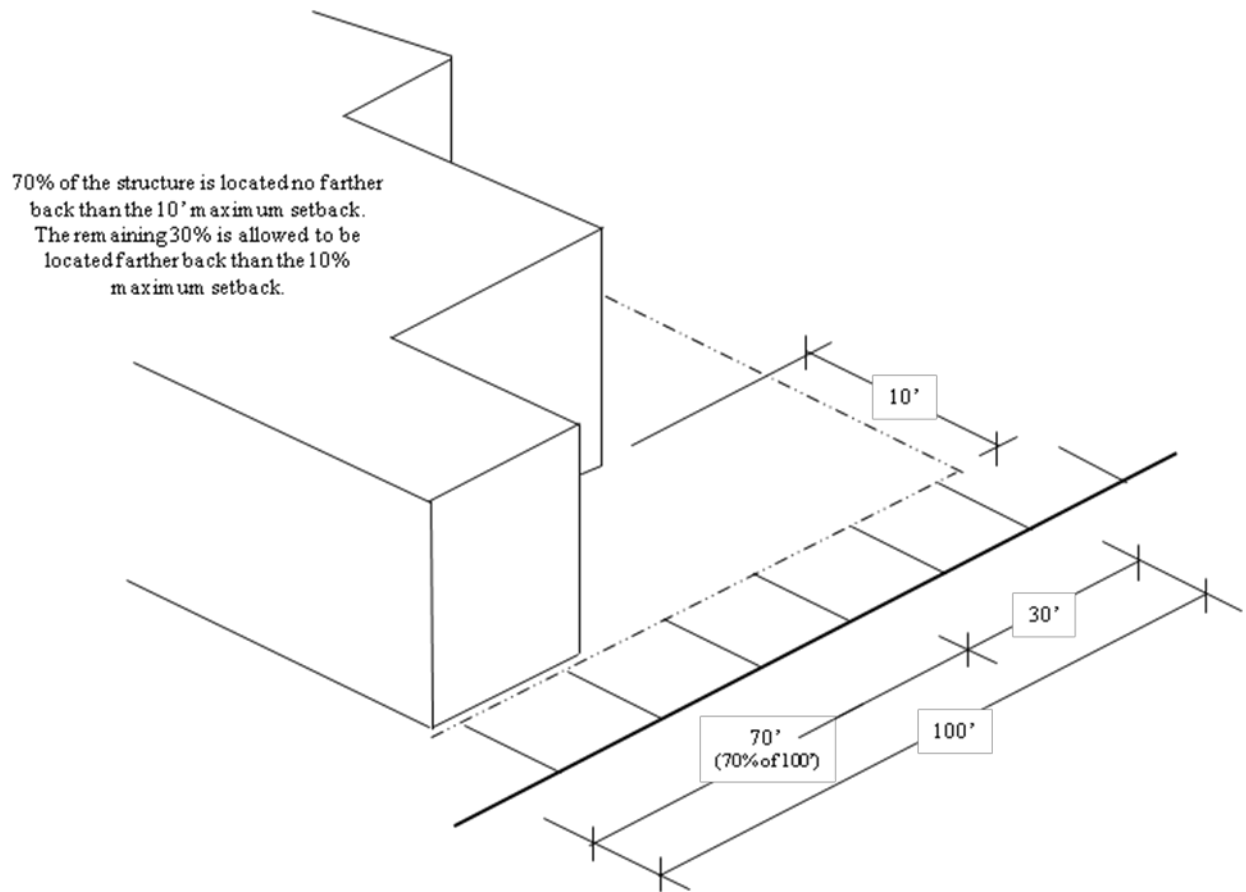
§131.0543 Setback Requirements for Commercial Zones

Setback requirements are specified in Tables 131-05C, 131-05D, and 131-05E and are subject to the following exceptions and additional regulations:

- (a) Front and *Street Side Setback* Requirements
- (1) Off-street parking in all commercial zones may be located within the required front *yard* and required street side yard adjoining the required landscaped strip abutting *public rights-of-way*.
 - (2) In the CN, CO, CV, and CC zones with a maximum front or street side setback as shown in Tables 131-05C, 131-05D, and 131-05E, the maximum setback shall apply to only 70 percent of the street frontage. The remaining 30 percent is not required to observe the maximum setback and may be located farther from the property line. See Diagram 131-05B.

Diagram 131-05B

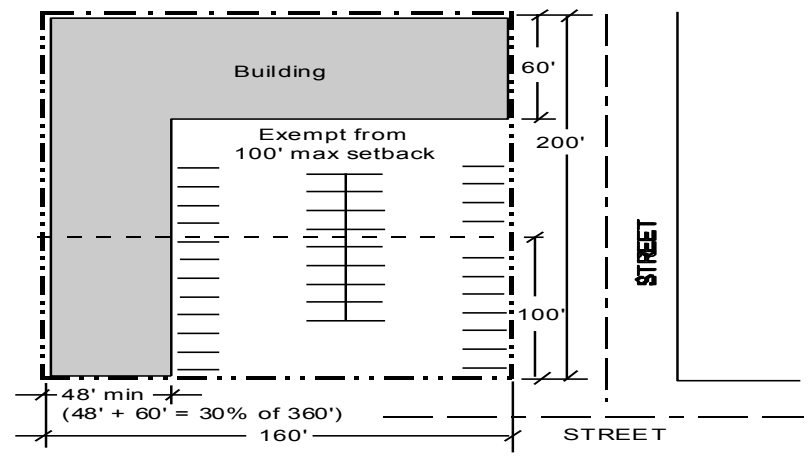
Maximum Setback Requirement



- (3) In the CC-1-1, CC-1-2, CC-2-1, CC-2-2, CC-4-1, CC-4-2, CC-5-1, and CC-5-2 zones, the 100-foot maximum front *setback* does not apply to *lots* with more than 75 feet of *street frontage* if the proposed *development* is within 10 feet of the front or *street side property line* for at least 30 percent of the *street frontage*. See Diagram 131-05C.

Diagram 131-05C

Exception to Maximum Setback



NOTE: Example of exemption from 100' max setback

- The lot has more than 75' of lineal street frontage
- Buildings are located within 0' -5' of the front and street side property line for 30% of the total linear street frontage

(b) Minimum Side and Rear *Setback*

- (1) In zones that require a 10-foot minimum side or rear *setback* and provide the option for a zero-foot side or rear *setback* as shown in Tables 131-05C, 131-05D, and 131-05E, the *structure* shall be placed anywhere in between the *property line* and the minimum 10-foot *setback*.
- (2) The optional side or rear *setback* is not applicable to commercial *development* abutting low *density* residentially zoned properties as further described in Section 131.0543(c).

- (c) Commercial *Development* Abutting Residentially Zoned Properties
 - (1) Commercial *development* abutting low *density* residentially zoned properties with a permitted *density* of less than 15 *dwelling units* per acre shall provide a 10-foot minimum *setback* for any side or rear *yard* that abuts low *density* residential zoned property. The *structure* shall comply with additional step back requirements in accordance with Section 131.0543(c)(3).
 - (2) Commercial *development* abutting medium to high *density* residentially zoned properties with a permitted *density* of 15 dwelling units or more per acre that provide no side or rear *setback* and locate the structure at the *property line* as provided for by Section 131.0543(b) shall comply with the following:
 - (A) Minimum step back for *structures* placed at the side *property line*.
 - (i) Any portion of the *structure* exceeding 15 feet in height shall be stepped back from the side *property line* 10 feet, or 10 percent of the *lot* width but not less than 5 feet, whichever is less.
 - (ii) Each 15 feet in height above 30 feet shall be stepped back at least 3 feet from the minimum *setback* of that portion of the *structure* immediately below.
 - (B) Minimum step back for *structures* placed at the rear *property line*.
 - (i) Any portion of the *structure* exceeding 15 feet in height shall be stepped back from the rear *property line* 10 feet, or 10 percent of the *lot* depth but not less than 5 feet, whichever is less.
 - (ii) Each 15 feet in height above 30 feet shall be stepped back at least 3 feet from the minimum *setback* of that portion of the *structure* immediately below.

- (3) For side and rear *yards*, if the *structure* is set back 10 feet or more from the *property line*, each 15 feet in height above 30 feet shall be stepped back at least 3 feet from the minimum *setback* of that portion of the *structure* immediately below.

(Added 12-9-1997 by O-18451 N.S.; effective 1-1-2000.)

(Amended 8-4-2011 by O-20081 N.S.; effective 10-6-2011.)

(Amended 6-18-2013 by O-20261 N.S.; effective 7-19-2013.)

(Amended 2-1-2021 by O-21288 N.S.; effective 3-3-2021.)

§131.0546 Maximum Floor Area Ratio

Maximum *floor area ratio* is specified in Tables 131-05C, 131-05D, 131-05E and is subject to the following additional regulations:

- (a) *Floor Area Ratio* Bonus for Mixed Use
 - (1) A *floor area ratio* bonus is provided in some commercial zones, as indicated in Tables 131-05C, 131-05D, and 131-05E, for residential uses that are developed as a part of a mixed-use *development*. A minimum required residential *floor area ratio* is shown in the tables, and must be applied toward the residential portion of the project. The remainder of the bonus may be used for either commercial or residential uses.
 - (2) If an underground parking *structure* is provided as part of a mixed-use *development*, a *floor area ratio* bonus shall be provided equal to the *gross floor area ratio* of the underground parking *structure* on the *premises*, but not to exceed a *floor area ratio* of 1.0. The additional *floor area ratio* must be applied toward the residential portion of the *development*.
- (b) *Floor Area Ratio* Bonus for Child Care Facilities

In the CR-1-1, CR-2-1, CO-1-2, CO-2-2, CO-3-1, and CO-3-2 zones, a *floor area ratio* bonus over the otherwise maximum allowable *gross floor area* is permitted at the rate of 4-10 square feet of additional *gross floor area* for each 1 square foot of *gross floor area* devoted to the *child care facility* to be added to the total area of the *premises* when determining the *floor area ratio* for a *development*. The area designated for the *child care facility* must maintain an ‘E’ occupancy permit for a minimum of 10 years from the time of *construction permit* issuance and must be in compliance with the requirements of Section 141.0606 (Child Care Facilities).

(Added 12-9-1997 by O-18451 N.S.; effective 1-1-2000.)

(Amended 7-10-2015 by O-20512 N.S.; effective 8-9-2015.)

(Amended 1-27-2022 by O-21416 N.S.; effective 2-26-2022.)

§131.0548 Ground-floor Height

Ground-floor height requirements apply to *structures* with commercial uses on the ground floor. The minimum ground-floor height for *structures* shall be 13 feet, measured from *floor* to *floor*. The *ground-floor* height requirement shall not apply to *development* in the Coastal Height Limit Overlay Zone or the Clairemont Mesa Height Limit Overlay Zone.

(Added 7-10-2015 by O-20512 N.S.; effective 8-9-2015.)

(Amended 3-22-2018 by O-20917 N.S.; effective 4-21-2018.)

§131.0550 Pedestrian Paths

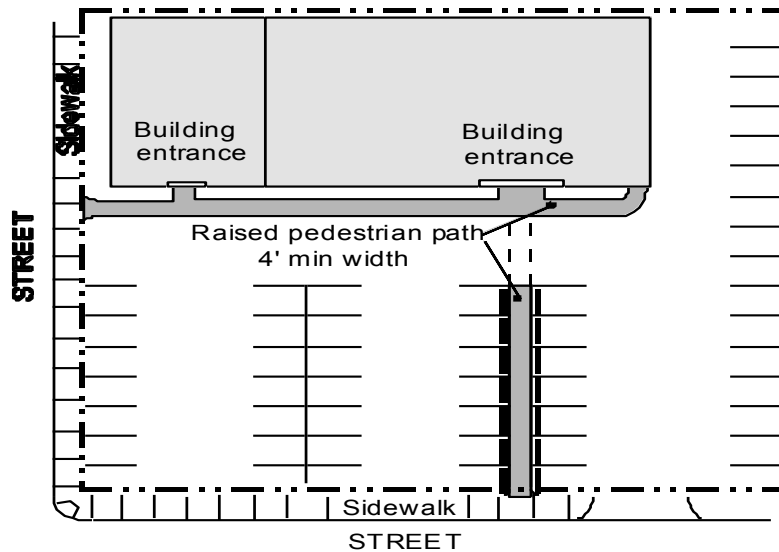
Where pedestrian paths are required in Tables 131-05C, 131-05D, or 131-05E, the number, location, and design of the paths shall be in accordance with the following.

- (a) Each commercial tenant space shall be accessible from an abutting public *street* by a pedestrian path that is at least 4 feet wide as shown on Diagram 131-05D. The path shall be continuous, clear of obstructions, easily identifiable as a pedestrian path, and visually distinguishable from other hardscaping. Pedestrian paths shall be separated from vehicular access areas by wheelstops, curbs, landscaping, or other physical barriers, except when crossing driveways or aisles.

- (b) At least one pedestrian path shall be provided for each property frontage on an improved public *street* when at some point along the frontage the difference in elevation between the sidewalk in the *public right-of-way* and the building or vehicle use area closest to the abutting *street frontage* is less than 4 feet, as shown in Diagram 131-05D. For a *premises* with more than three frontages, only three pedestrian paths are required.

Diagram 131-05D

Pedestrian Paths

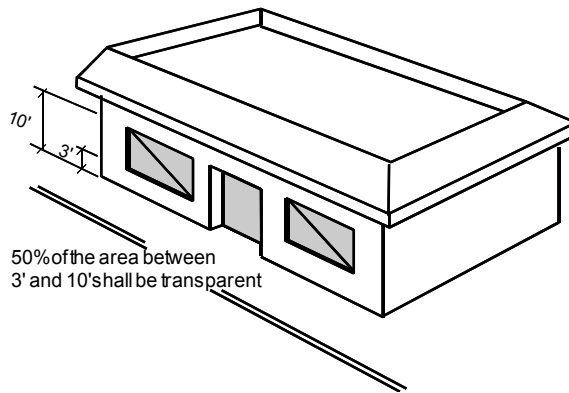


- (c) Building entrances located at the front or *street side property line*, where the building *setback* is zero, qualify as a required pedestrian path.
(Added 12-9-1997 by O-18451 N.S.; effective 1-1-2000.)

§131.0552 Transparency

Where transparency is required by Tables 131-05C, 131-05D, or 131-05E, a minimum of 50 percent of *street wall* area between 3 and 10 feet above the sidewalk shall be transparent, with clear glass visible into a commercial or residential use. Windows or other transparent materials that provide visibility into a garage or similar area do not count toward the required transparency. See Diagram 131-05E.

**Diagram 131-05E
Transparency**



(Added 12-9-1997 by O-18451 N.S.; effective 1-1-2000.)

§131.0554 Building Articulation

Where building articulation is required by Tables 131-05C, 131-05D, or 131-05E, the following regulations apply.

- (a) All building elevations fronting a *public right-of-way* shall be composed of offsetting planes that provide relief in the *building facade* by inseting or projecting surfaces (planes) of the building. The minimum number of offsetting planes and the minimum horizontal separation between planes is based on the length of the new *building facade*, as shown in Table 131-05F.

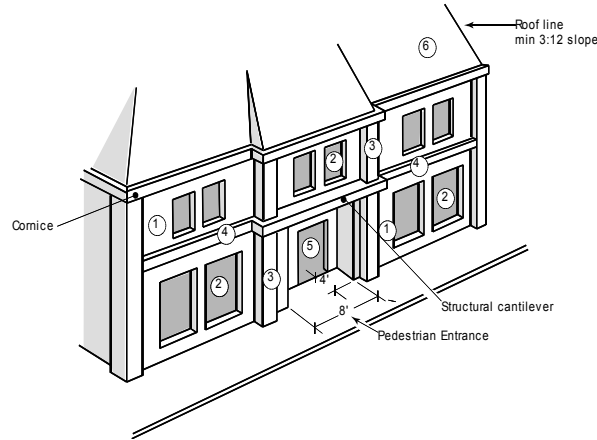
**Table 131-05F
Offsetting Plane Requirements**

Length of New <i>Building Façade</i>	Number of Offsetting Planes Required
25 ft or less	2 with a minimum separation of 3 inches
More than 25 ft. but less than or equal to 50 ft	4 planes consisting of : 2 with a minimum separation of 3 inches, and 2 with a minimum separation of 8 inches
More than 50 ft. but less than or equal to 100 ft	6 planes consisting of: 2 with a minimum separation of 3 inches, and 2 with a minimum separation of 8 inches, and 2 with a minimum separation of 3 feet
More than 100 ft	6 planes consisting of: 2 with a minimum separation of 3 inches, and 2 with a minimum separation of 8 inches, and 2 with a minimum separation of 3 feet, and plus 1 additional plane for each 50 feet of <i>building facade</i> length over 100 feet (maximum of 3 additional planes required with a minimum separation of 5 feet).

- (1) For purposes of this section, the area of a plane may include separate surfaces that are non-contiguous but which all lie in the same plane. Each numbered surface of the building shown in Diagram 131-05F represents a different plane of the building facade. The sum of the area of each plane labeled with the same number in Diagram 131-05F is the total area of that plane.

Diagram 131-05F

Building Articulation



- (2) For purposes of this section, an offset is the distance between two different planes of a *building facade* measured perpendicularly to the plane surface (for example, the dimension between plane 1 and 2 in Diagram 131-05F).
- (b) Where a 3-inch or 8-inch offset between planes is required, the total area of any single offsetting plane shall be more than 5 percent and less than 50 percent of the total *building facade* area on that frontage.
- (c) Where a 3-foot or 5-foot offset between planes is required, the total area of any single offsetting plane shall be more than 10 percent and less than 50 percent of the total *building facade* area on that frontage.
- (d) The following elements of a *building facade* may be used to satisfy any one required building plane:
 - (1) Roofs with a minimum pitch from eave to peak of 3:12 (3 vertical feet to 12 horizontal feet) and a minimum area of 10 percent of the building elevation fronting on a *public right-of-way*;

- (2) Pedestrian entrances with a minimum offset dimension of 4 feet from the primary plane of the *building facade* and a minimum width of 8 feet;
- (3) A cornice equal to at least 70 percent of the length of the *building facade* that has a minimum offset of 1 foot, located along the *street wall*; and
- (4) Structural cantilevers with combined lengths totaling at least 30 percent of the length of the *building facade*, with an average offset of at least 2 feet, located along the *street wall*. *Roof eaves* do not count as offsetting planes.

(Added 12-9-1997 by O-18451 N.S.; effective 1-1-2000.)

§131.0555 **Parking Restriction**

In the CO-1-1, CO-3-1, CO-3-2, and CO-3-3 zones, parking is not permitted in the required front and *street side yard*.

(Added 12-9-1997 by O-18451 N.S.; effective 1-1-2000.)

(Amended 7-10-2015 by O-20512 N.S.; effective 8-9-2015.)

(Amended 10-10-2018 by O-20991 N.S.; effective 11-9-2018.)

[Editors Note: Amendments as adopted by O-20991 N.S. will not apply within the Coastal Overlay Zone until the California Coastal Commission certifies O-20991 N.S. as a Local Coastal Program Amendment.

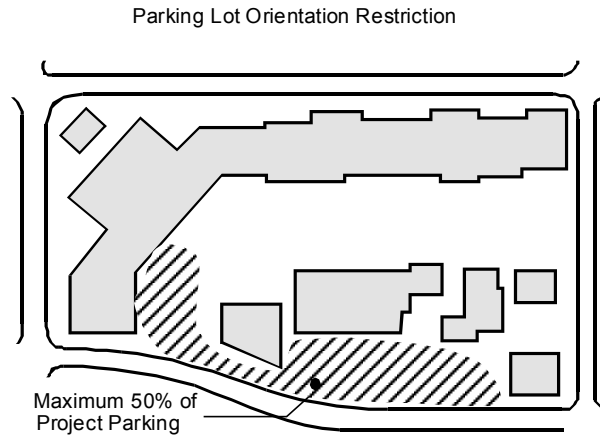
Click the link to view the Strikeout Ordinance highlighting changes to prior language http://docs.sandiego.gov/municode_strikeout_ord/O-20991-SO.pdf]

§131.0556 Parking Lot Orientation

In all zones where the parking lot orientation regulation applies, as indicated in Table 131-05D or 131-05E, proposed *development* with greater than 100,000 square feet of *gross floor area* and more than one *street frontage* shall locate no more than 50 percent of the *vehicular use area* between the longest *street frontage* providing public access to the *premises* and a building or buildings.

Diagram 131-05G

Parking Lot Orientation Restriction



(Added 12-9-1997 by O-18451 N.S.; effective 1-1-2000.)
(Amended 12-1-2016 by O-20752 N.S.; effective 12-31-2016.)
(Amended 8-9-2019 by O-21114 N.S.; effective 9-8-2019.)

[Editors Note: Amendments as adopted by O-21114 N.S. will not apply within the Coastal Overlay Zone until the California Coastal Commission certifies it as a Local Coastal Program Amendment.

Click the link to view the Strikeout Ordinance highlighting changes to prior language http://docs.sandiego.gov/municode_strikeout_ord/O-21114-SO.pdf]