



Main Ranch EL CAJON

EXPLORE A NEW WAY OF LIVING IN EL CAJON

Main Ranch^{EL CAJON}

FEATURES OF OUR HOMES

Exterior Details

- Architectural finishes featuring Spanish Colonial, Italian Farmhouse & Craftsman styles with designer selected coordinating color schemes per elevation
- Integral Stucco with 16/20 sand finish
- Concrete roof tiles in assorted styles and colors
- Therma-Tru® fiberglass entry door pre-selected per plan and elevation with chrome hardware
- 2 Car garages with steel sectional roll-up doors, Lift Master opener and transmitters (windows at elevation A & C only)
- Waterproof electrical outlets at front and rear
- Hose bibs (per plans)
- Rain gutters at entries per elevation
- Drywall with fog coated garage interior
- Concrete walkways, porches and stoops in broom finish

Entertainment Friendly Gourmet Kitchens

- Quartz countertops with 6" backsplash in 2 colors with ¾" flat polished edge detail.
- Frigidaire® Stainless Steel Appliances include:
 - 30" 4 burner freestanding range with self cleaning single oven and Microhood
 - Energy star qualified dishwasher
- Amerisink® stainless steel single bowl sink with Moen® Integra pull down faucet in Chrome finish

Exquisite Interior Detailing

- 12" x 12" DAL® Parkway ceramic floor tile at entry
- Vinyl flooring at Kitchen, Bathrooms and Laundry
- Cultured marble countertops with 4" backsplash and 1 ½ square edge detail at secondary bathrooms and laundry
- Fibercare® tub/shower unit with Moen® Chateau chrome faucet and chrome shower rod at secondary bathrooms
- Amerisink® undermount sink with Moen® Chateau chrome centerset faucet fixture at secondary bathrooms
- Powder Bath featuring Proflo® Pedestal sink with Moen® Chateau chrome centerset faucet fixture
- Frameless square polished edge mirrors at secondary bathrooms and rectangular at Powders

- Orange peel drywall texture with square wall corner detail throughout
- Craftsman stair rail system design at lower portion per plans with low wall stair system at second floors
- 6' 8" Interior slab doors throughout with Schlage® Corona chrome knob hardware
- Beautiful white Thermafoil slab cabinets featuring Euro door hinges and drawer guides with stainless knobs

Luxurious Master Suite and Bath

- Generous walk-in closet with white wire shelving
- Cultured Marble countertops with 4" backsplash and 1 ½ square edge
- Amerisink® undermount sink with Moen® Chateau two handle chrome centerset faucet fixture
- Fibercare® shower unit with Moen® Chateau faucet and Frameless 1/4" clear glass shower enclosure
- Frameless square polished edge mirror
- Frameless medicine cabinet for extra storage
- Proflo® elongated toilet

Safety and Energy-Efficient Features

- Alpine® Dual-glazed vinyl windows with low E glass
- Carbon monoxide and smoke detectors
- Carrier® forced heating and air conditioning system with energy efficient condenser
- EV car charger conduit
- Exterior wall and ceiling insulation
- High-efficiency tankless water heater
- Honeywell® digital thermostat for maximum efficiency
- Interior fire sprinklers throughout
- Recessed LED can lights (at standard locations, per plans)
- Solar conduit at garage
- Quietcool® whole house cooling fan
- Weather-stripping at exterior doors to reduce draft into home

Technology

- Equipped with Category 5 wiring for phone or internet at the specified locations per plan
- USB port receptacle at Kitchen at kitchen island

6/7/2018

The specifications and features set for the above are, to the best of Seller's knowledge, accurate as of the date hereof. Notwithstanding this fact, this list is informational purposes only and may not list all options, upgrades or decorator items. Seller reserves the right to change specifications of features and upgrades included in the home, as necessary from time to time.

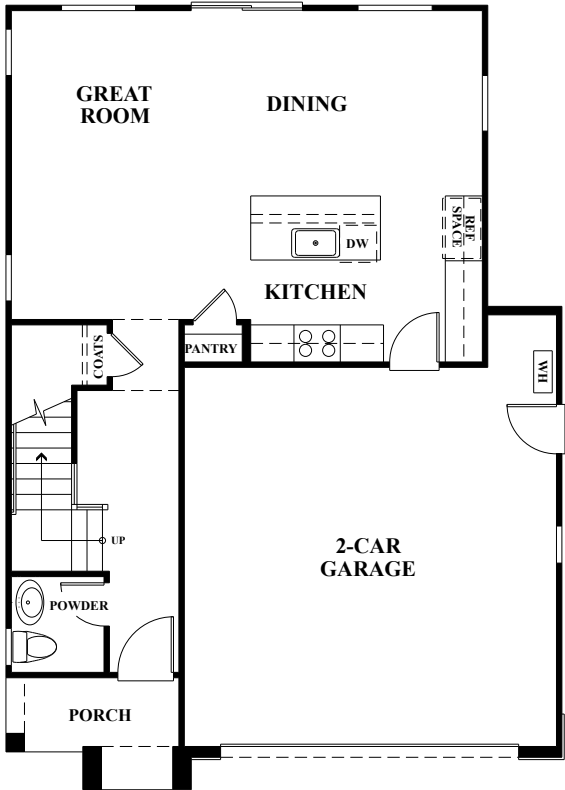
Main Ranch

EL CAJON

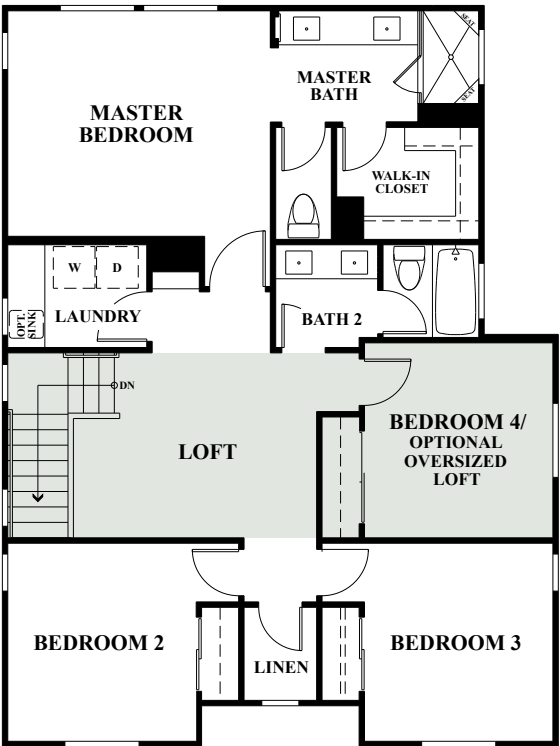
FLOORPLAN 3

PRELIMINARY

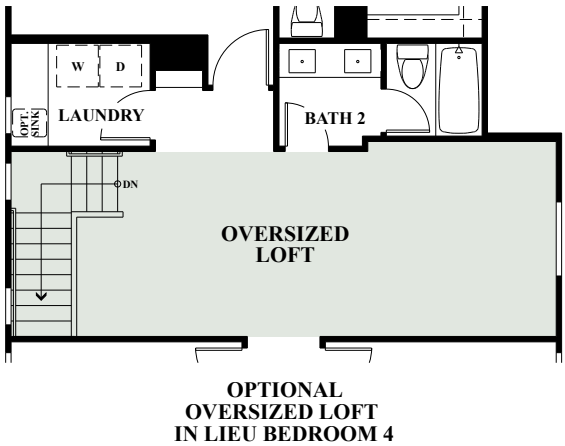
4 Bedrooms, 2.5 Bathrooms + Loft
Approx. 1,724 Sq. Ft.
2-Car Garage



1ST FLOOR



2ND FLOOR



OPTIONAL
OVERSIZED LOFT
IN LIEU BEDROOM 4

MainRanchLiving.com



6.06.18. THE SPECIFICATIONS AND FEATURES SET FOR THE ABOVE ARE, TO THE BEST OF SELLER'S KNOWLEDGE, ACCURATE AS OF THE DATE HEREOF. NOTWITHSTANDING THIS FACT, THIS LIST IS INFORMATIONAL PURPOSES ONLY AND MAY NOT LIST ALL OPTIONS, UPGRADES OR DECORATOR ITEMS. SELLER RESERVES THE RIGHT TO CHANGE SPECIFICATIONS OF FEATURES AND UPGRADES INCLUDED IN THE HOME, AS NECESSARY FROM TIME TO TIME. CALIFORNIA WEST COMMUNITIES RESERVES THE RIGHT TO ALTER PRICES, PRODUCTS, DESIGNS, SPECIFICATIONS AND INFORMATION PROVIDED WITHOUT PRIOR NOTICE OR OBLIGATION. ALL INFORMATION SUBJECT TO CHANGE. BRE #1520580

CaliforniaWest
A Legacy of Fine Living

FLOORPLAN 3

4 Bedrooms, 2.5 Bathrooms + Loft

Approx. 1,724 Sq. Ft.

2-Car Garage



3A Residence



3B Residence



3C Residence

MainRanchLiving.com



6.06.18. THE SPECIFICATIONS AND FEATURES SET FOR THE ABOVE ARE, TO THE BEST OF SELLER'S KNOWLEDGE, ACCURATE AS OF THE DATE HEREOF. NOTWITHSTANDING THIS FACT, THIS LIST IS INFORMATIONAL PURPOSES ONLY AND MAY NOT LIST ALL OPTIONS, UPGRADES OR DECORATOR ITEMS. SELLER RESERVES THE RIGHT TO CHANGE SPECIFICATIONS OF FEATURES AND UPGRADES INCLUDED IN THE HOME, AS NECESSARY FROM TIME TO TIME. CALIFORNIA WEST COMMUNITIES RESERVES THE RIGHT TO ALTER PRICES, PRODUCTS, DESIGNS, SPECIFICATIONS AND INFORMATION PROVIDED WITHOUT PRIOR NOTICE OR OBLIGATION. ALL INFORMATION SUBJECT TO CHANGE. BRE #1520580

CaliforniaWest
A Legacy of Fine Living