

vivint.Solar™



WELCOME TO VIVINT SOLAR



MEET YOUR NEW SOLAR ENERGY SYSTEM

We believe energy should do more, should power our homes while giving back to the planet, and that starts with you. We've designed a custom solar energy system for your home, and now it's time to take a look.

HERE'S YOUR CUSTOM SITE PLAN

THE PERFECT FIT

Here's the solar energy system for your home. We designed it to match your energy needs and preferences. So sit back, relax, and let us take care of the details.

4020 Gamma St, San Diego, CA 92113, USA

SYSTEM SIZE

4.41 kW DC

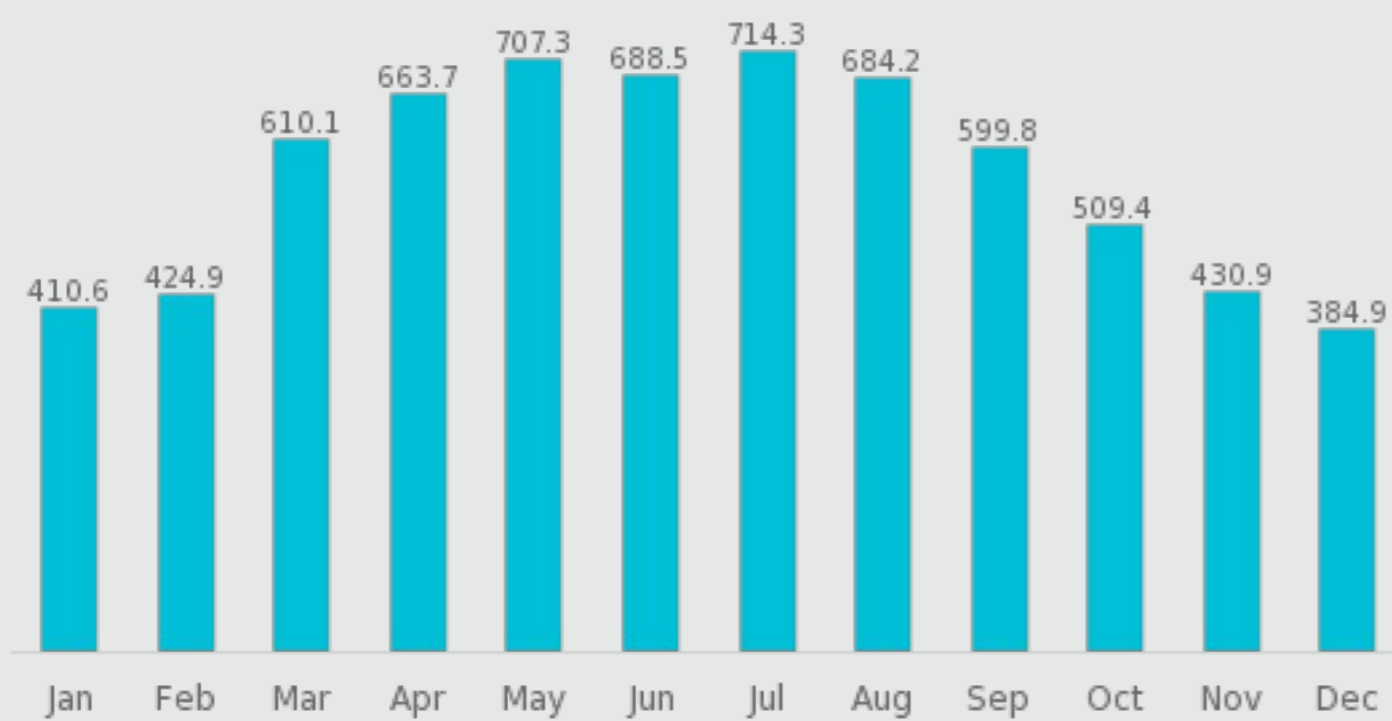
FIRST YEAR

ESTIMATED PRODUCTION

6829 kWh AC

MONTHLY

ESTIMATED PRODUCTION



We estimate the solar system will offset 127% of your current energy usage, based on the information you have provided.

Your preferences can affect the design. See page 6 for more information.



(F) Front of Home (1) Solar Panels (2) Low Producing (3) Cannot Fit Array

ABOUT THE SYSTEM

DESIGN LIMITATIONS
Customer Usage Met

INVERTER

MAKE	MODEL	QUANTITY
SolarEdge Technologies	SE3800H-US000NNC2	1

MODULE

MAKE	MODEL	QUANTITY
Hanwha Solar	Q.PEAK BLK-G5 315	14

EXPECTED ANNUAL USAGE
5376 kWh AC

SHADE SOURCE
Google Sunroof

SYSTEM AVERAGE SUNHOURS
1548

(1) 6,829 kWh AC (1,548 Sun Hours)

(2) to (3) Design limitation met using other locations.

GOOD FOR YOU, GREAT FOR THE PLANET.

See what environmental impact you
will have over 20 years.



2423

TREES PLANTED



20

CARS OFF THE ROAD



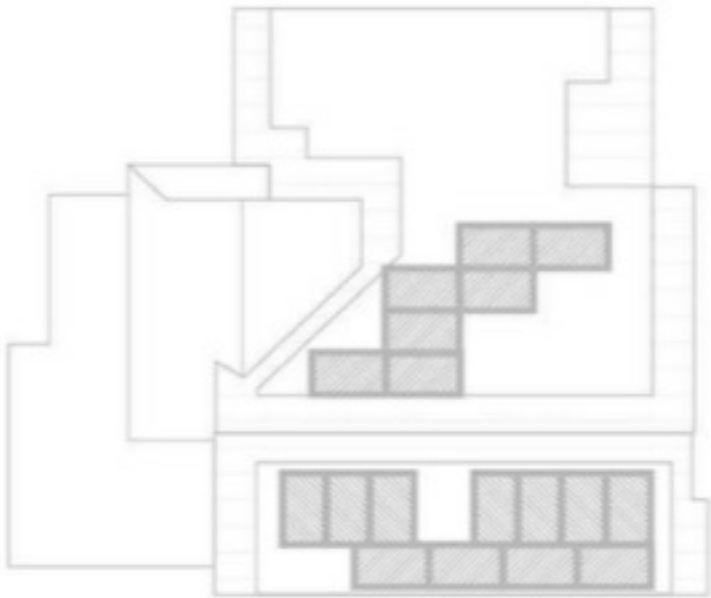
103390

POUNDS OF COAL BURNED

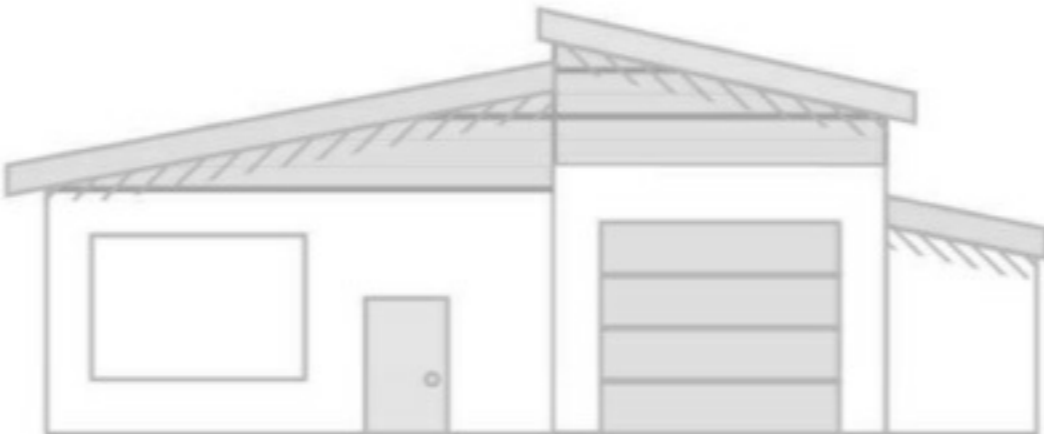
NUMBERS BASED OFF THE ESTIMATED FIRST YEAR PRODUCTION
ACCORDING TO WWW.EPA.GOV/ENERGY/GREENHOUSE-GAS-EQUIVALENCIES-CALCULATOR

HERE'S HOW IT WORKS

1 We have designed a solar array for your home.



2 The Vivint Solar System produces the clean energy to power your home.



3 You will have a net meter installed that calculates the power produced by the solar energy system.

You will either use that power in real time or it will be sent back to the grid and calculated through the net meter as a credit.



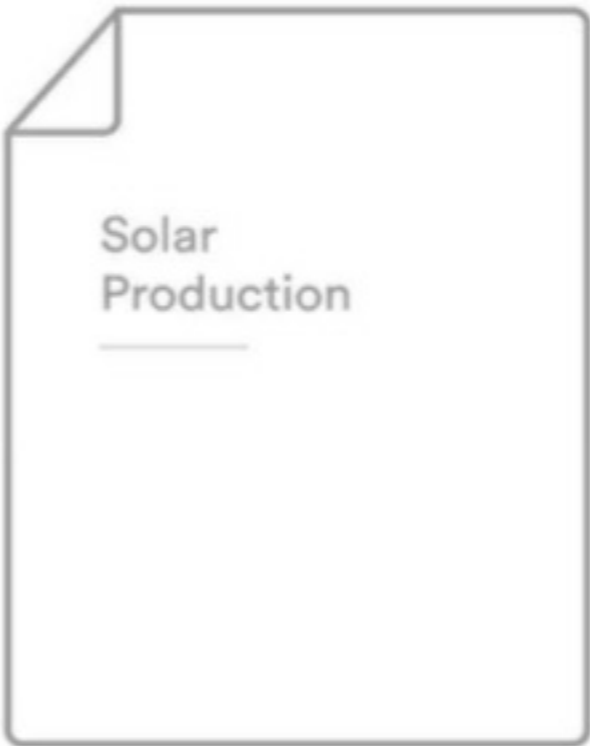
4 Each month your Vivint Solar system will produce power. That power production may vary each month.



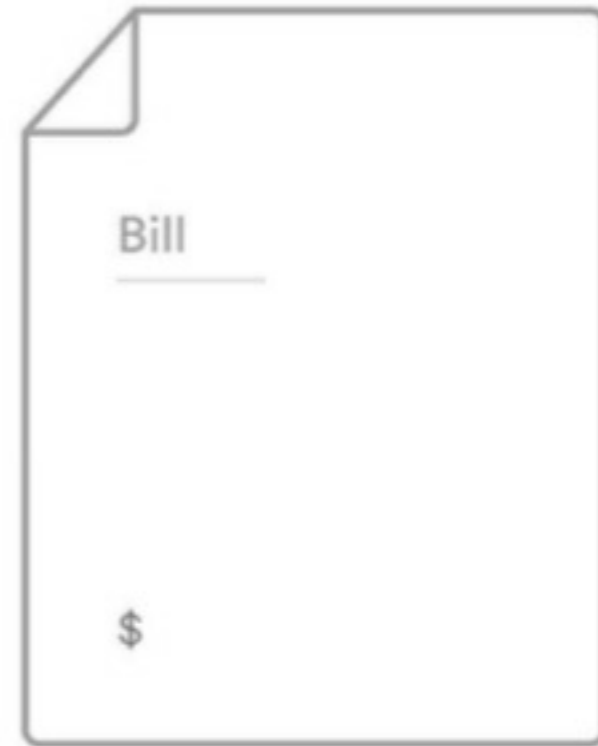
You may still need to use power from the utility depending on your needs and solar production.



5 Your online Account Center will allow you to see how much power was produced by the solar system on a monthly basis.



You will also get a bill from your utility if your energy needs exceed the solar production.





THERE HAS NEVER BEEN A BETTER TIME TO GO SOLAR

For more information, feel free to visit the Account Center at account.vivintsolar.com

VIVINTSOLAR.COM

Copyright © 2017 Vivint Solar Developer, LLC. All rights reserved. Vivint Solar Developer, LLC (EIN: 80-0756438) is a licensed contractor in each state in which we operate. For information about our contractor licenses, please visit www.vivintsolar.com/licenses.

*The system, as depicted and described in this customer packet, is designed to reasonably reflect your preference to: (i) maximize the system size to increase your estimated usage offset, (ii) design a system that places the panels on your roof sections in accordance with your aesthetic preferences, (iii) maximize the system's efficiency per panel and optimize the economic return to you, or (iv) some combination of the foregoing factors. A design based on factors like maximizing the system size or your aesthetic preferences may have a reduced economic value per additional solar panel, than a system designed for maximum efficiency. Design factors that influence the system's performance, include (without limitation): shading, roof constraints, layout and orientation of the panels, slope of your roof, and performance of the equipment.

System performance may degrade by about 0.7% per year for 20 years.

