

DRAFT

# ◆ The Ibiza ◆

Dramatic foyer opens to a spacious great room highlighted by a cozy fireplace, vaulted ceiling, and spectacular views of the rear yard.

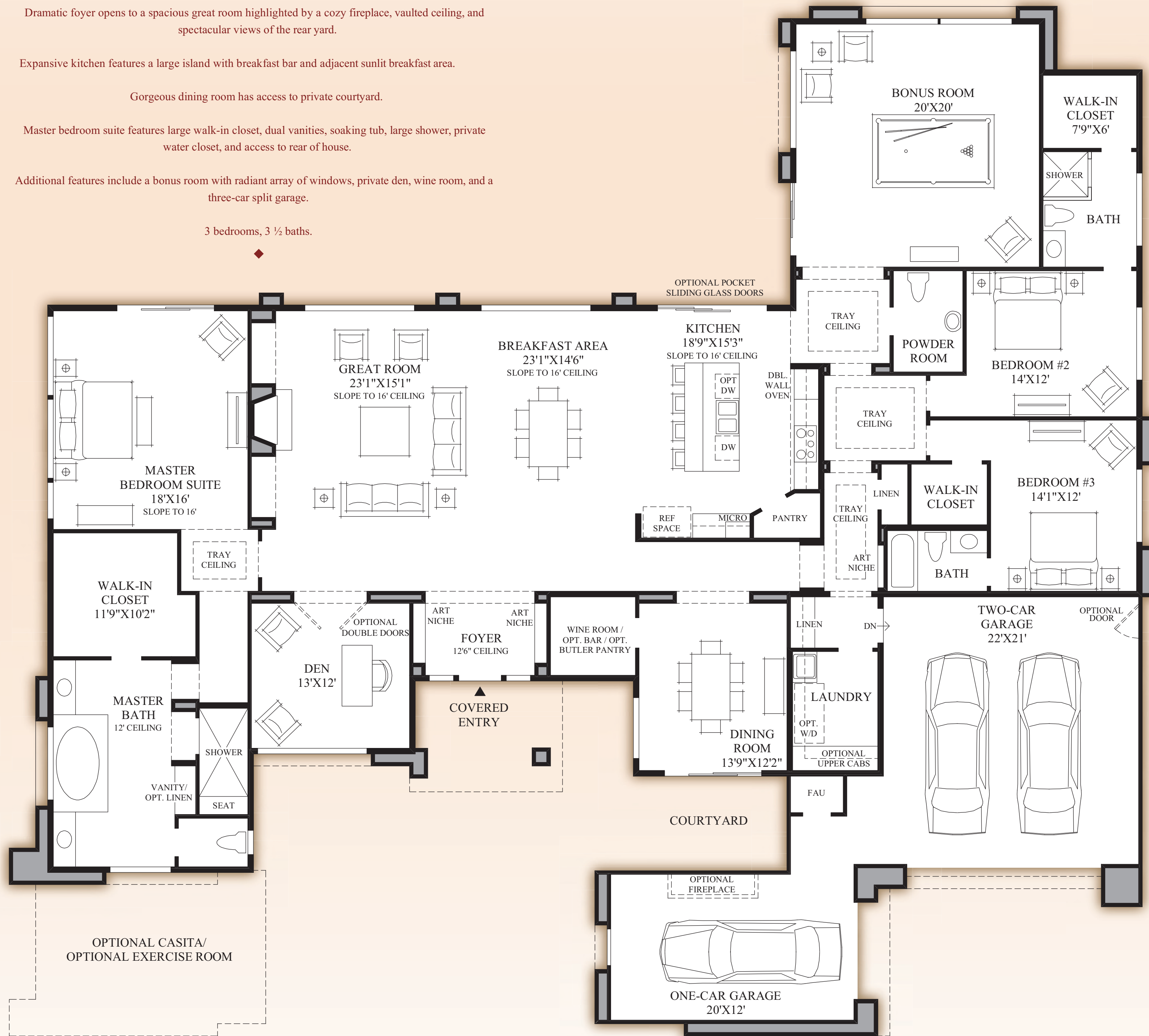
Expansive kitchen features a large island with breakfast bar and adjacent sunlit breakfast area.

Gorgeous dining room has access to private courtyard.

Master bedroom suite features large walk-in closet, dual vanities, soaking tub, large shower, private water closet, and access to rear of house.

Additional features include a bonus room with radiant array of windows, private den, wine room, and a three-car split garage.

3 bedrooms, 3 1/2 baths.



**Floor Plan**  
CONTEMPORARY ELEVATION SHOWN

DRAFT

The rendering/floor plan may not reflect the exact features or dimensions of your home. All dimensions are subject to field variations. Certain design features and options may vary from community to community. All options to be included in your home must be specified in an Exhibit B to the Agreement of Sale. Please consult our sales representative for details.

