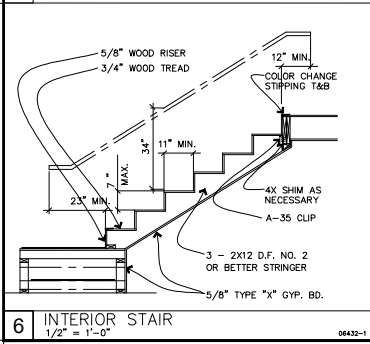
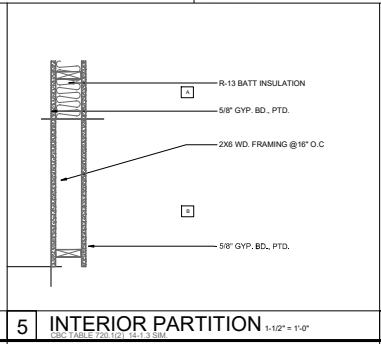


NOTE: 1. ALL INTERIOR DOORS TO BE SOLID CORE WOOD 3'-0" X 6'-8" W/ LEVER HARDWARE AND 5' HINGULE BALL BEARING OILITE HINGES.
 2. ALL EXTERIOR DOORS BY METAL BUILDING VENDOR.

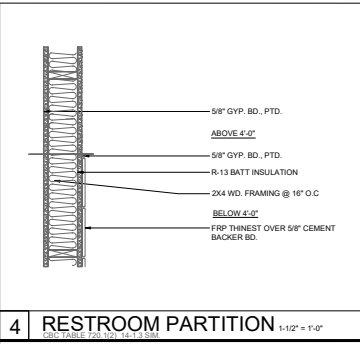
1 FLOOR PLAN & ACCESSIBLE ROUTE PLAN 1/4" = 1'-0" SEE "MB" SERIES DRAWINGS FOR METAL BUILDING DESIGN AND DETAILS



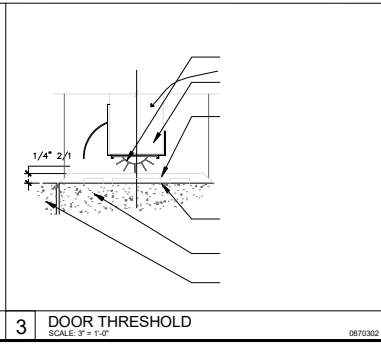
6 INTERIOR STAIR 1/2" = 1'-0" 04432-1



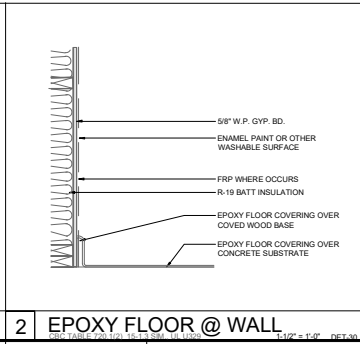
5 INTERIOR PARTITION 1-1/2" = 1'-0" 022-11307-2, 21101-1, 21101-3, 21101-4



4 RESTROOM PARTITION 1-1/2" = 1'-0" 022-11307-2, 21101-1, 21101-3, 21101-4



3 DOOR THRESHOLD SCALE: 3" = 1'-0" 0870302



2 EPOXY FLOOR @ WALL 1-1/2" = 1'-0" DET 30 022-11307-2, 21101-1, 21101-3, 21101-4

REVISIONS	DATE

JOB:
 DATE: 5/7/2019

SHEET TITLE:
FLOOR PLAN

SHEET NO.
A1.1

REVISION NO. 0