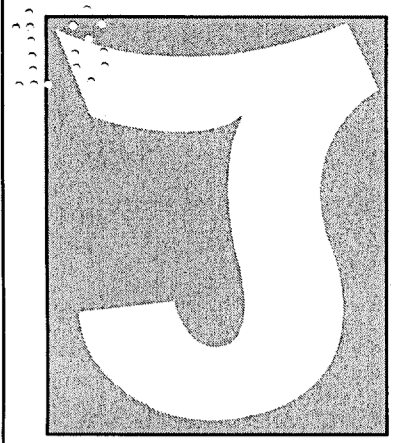


LABS
B U L A 618
APPROVED

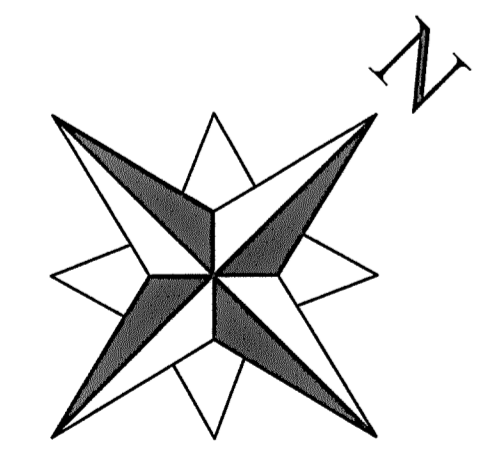


6745 DARBY AVE.
RESEDA, CA 91335
818.402.4772

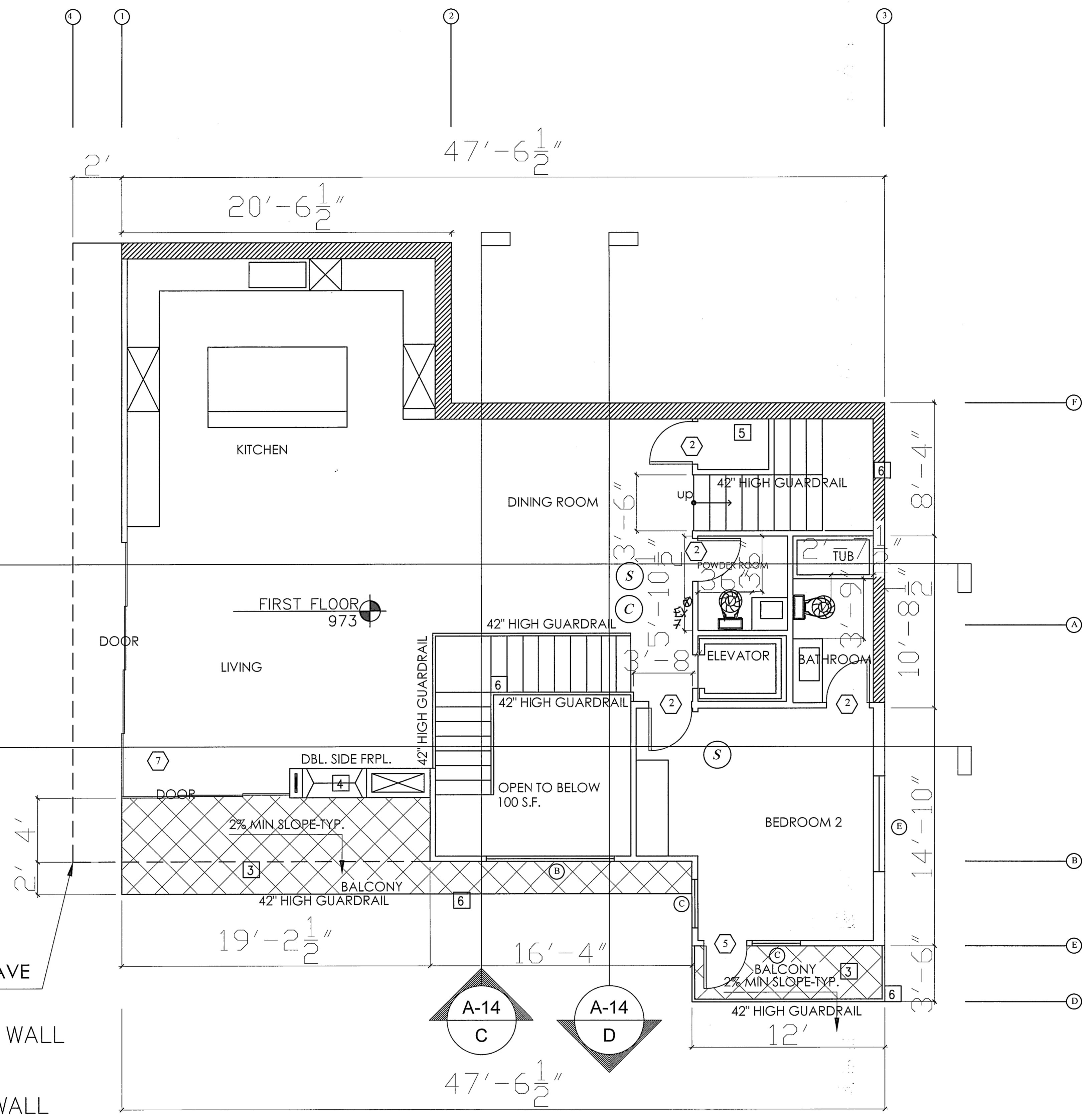
NOTES

- NEW WALL
- ARCHWAY
- 1 HOUR RATED WALL/TYP. X GYPSUM BOARD
- HARD WIRED SMOKE DETECTOR W/ BATTERY BACK-UP
- CARBON MONOXIDE & HARD WIRED SMOKE DETECTOR W/ BATTERY BACK-UP
- MECHANICAL VENT, 7 1/2 AIR CHANGE PER HOUR, DIRECTLY TO THE OUTSIDE "ENERGY STAR" W/ HOMIDISTAT
- GROUND- FAULT CIRCUIT-INTERUPTER
- 4" MIN. METAL DRYER VENT, DIRECTLY TO OUTSIDE MAXIMUM 14' LENGTH W/TWO ELBOWS FROM DRYER
- INDICATES DOOR
- INDICATES WINDOW
- MIN. 1" (inside diameter) LISTED RACEWAY IS INSTALLED FOR EACH UNIT TO ACCOMMODATE A DEDICATED 208/240 VOLT BRANCH CIRCUIT. MIN 40 AMP DEDICATED CIRCUIT
- IRRIGATION CONTROLLER. WEATHER BASE SYSTEM
- BALCONY W/ CROSSFIELD PRODUCTS CORP. DEX-O-TEX COATING (1CBO#2360) OR EQUAL, ICC-ESR-1757 TYPE
- FIREPLACE IS DIRECT-VENT, SEALED COMBUSTION TYPE. 4.503.1 HEAT AND GLO COSMO 42 REFERENCE GRN-1
- 1-HOUR CONSTRUCTION RATED DRYWALL 5/8" TYPE X
- 42" HIGH GUARDRAIL. SHALL NOT ALLOW PASSAGE OF 4" MAX SPHERE. ESR-3269 ESR 3269 LARR 25784

THE SERVICE PANEL CIRCUIT DIRECTORY SHALL IDENTIFY THE OVERCURRENT PROTECTIVE DEVICE RESERVED FOR FUTURE EV CHARGING AS EV CAPABLE. THE RACEWAY TERMINATION LOCATION SHALL BE PERMANENT AND VISIBLY MARKED EV CAPABLE



- RETAINING WALL
- PLANTER WALL
- STRUCTURAL WALL



WINDOW SCHEDULE						
NO.	WIDTH	HEIGHT	OPENING	TYPE	FRAME COLOR	REMARKS
(A)	6'-0"	6'-0"	CASEMENT	ALMN.	WHITE	LOW-E
(B)	8'-0"	6'-0"	CASEMENT	ALMN.	WHITE	LOW-E
(C)	3'-0"	6'-0"	CASEMENT	ALMN.	WHITE	LOW-E
(D)	5'-0"	5'-0"	CASEMENT	ALMN.	WHITE	LOW-E
(E)	6'-0"	1'-0"	AWNING	ALMN.	WHITE	LOW-E
(F)	6'-0"	8'-2"	CASEMENT	ALMN.	WHITE	LOW-E
(G)	3'-0"	3'-0"	AWNING	ALMN.	WHITE	LOW-E
(H)	6'-0"	10'-0"	FIXED	ALMN.	WHITE	LOW-E
(I)	6'-6"	5'-4"	FIXED	ALMN.	WHITE	LOW-E
(J)	3'-0"	4'-6"	CASEMENT	ALMN.	WHITE	LOW-E
(K)	2'-0"	6'-0"	FIXED	ALMN.	WHITE	LOW-E/OBSCURE

DOOR SCHEDULE				
NO.	CLEAR WIDTH	HEIGHT	MATERIAL	REMARKS
(1)	5'-0"	8'-0"	WOOD	ENTRANCE DOOR
(2)	2'-8"	8'-0"	WOOD	INTERIOR DOOR
(3)	3'-0"	8'-0"	WOOD	INTERIOR DOOR
(4)	2'-8"	8'-0"	WOOD	GARAGE-20 MINUTES FIRE RATED SELF-CLOSING
(5)	3'-0"	8'-0"	EXTERIOR	EXTERIOR DOOR
(6)	6'-0"	8'-0"	ALUMINUM	EXTERIOR DOUBLE DOORS
(7)	25'-0"	8'-0"	ALUMINUM	FAMILY ROOM-BIFOLD DOOR
(8)	16'-0"	8'-0"	ALUMINUM	MASTER BEDROOM-BIFOLD DOOR

SECOND FLOOR

PLANS APPROVED
City of Los Angeles
City Planning Department
Date: 3-14-18 By: *[Signature]*
Comments: DIR 2015-4308
ZA-2017-1832

City of Los Angeles
Department of Building and Safety
Green Building Division
This set of plans and specifications has been reviewed and is approved for compliance with state and local ordinances related to the Green Building Code.
This set of plans MUST be at the job site during construction.
It is unlawful to alter, change, or deviate from these plans.
The stamping of this plan SHALL NOT be construed to be approval of a violation of any provisions of any Ordinance or Law.

By: *[Signature]* Total of 4/12 Sheets
Date: _____

READY TO ISSUE
BY KAMRAN GHORBANI
JUN 12 2018
Signature _____

SUBMITTALS/REVISIONS

WILLOW GLEN

8029 WILLOW GLEN ROAD
LOS ANGELES, CA 90046

PROJ NO:	
ACCT MGR:	JA
ENG:	
DWN BY:	JON AZAL
PM:	JA
DATE:	10/20/2016
SCALE:	1/4"=1'
SHEET TITLE:	2ND FLOOR PLAN
SHEET NO:	A-8