

THE ALISO

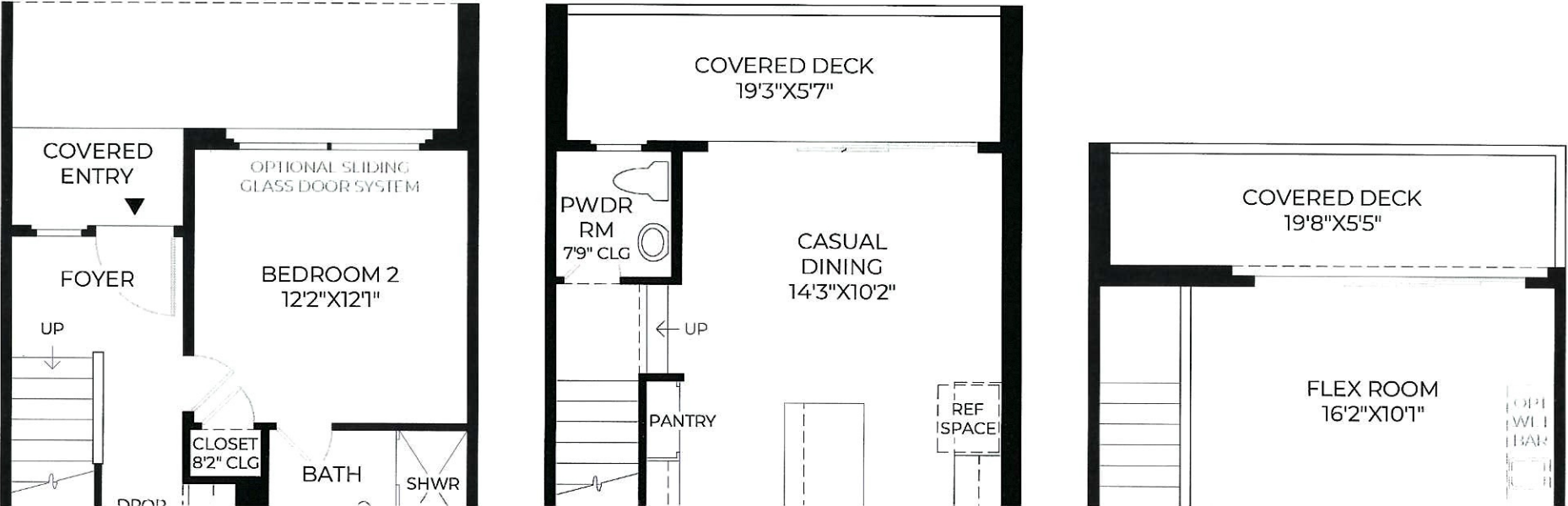


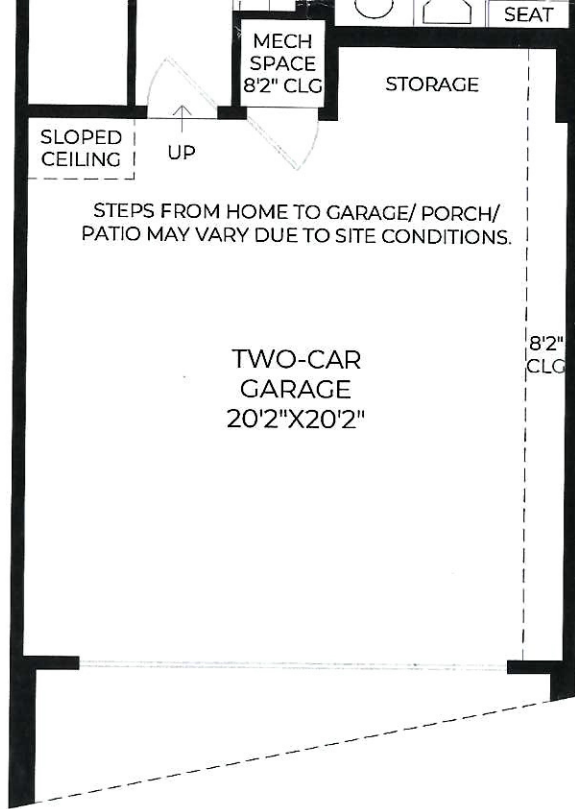
Cody Place

900 South Plam Canyon Drive | Palm Springs, California 92264 | 760-327-5100

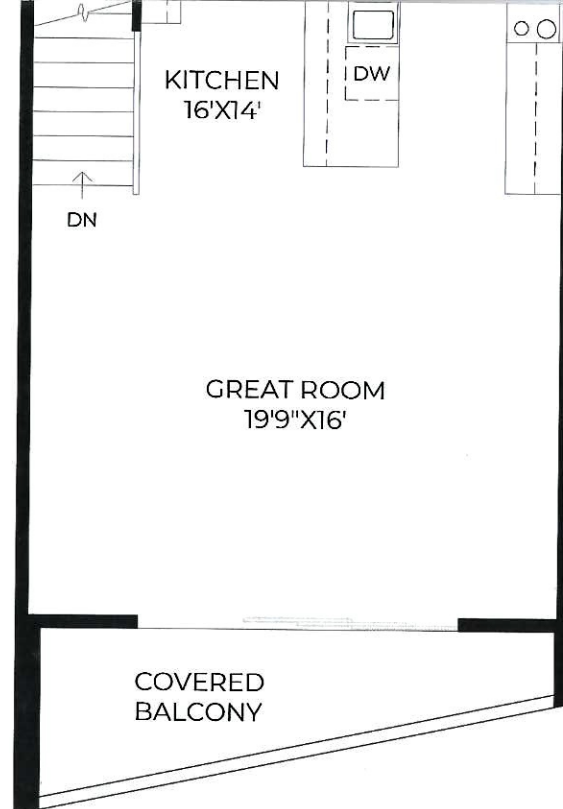
THE ALISO | Floor Plan

2 Bedrooms | 2½ Baths | 2-Car Garage

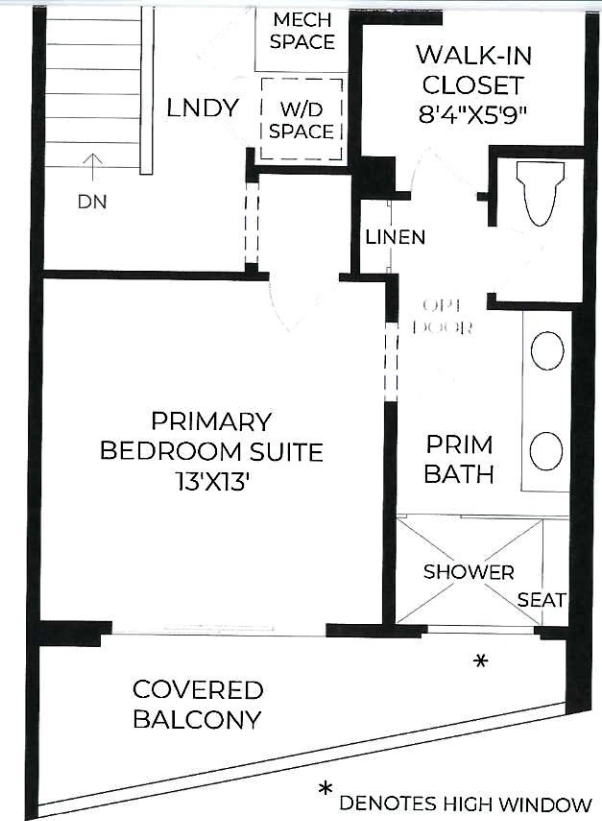




First Floor
9' CEILING HEIGHT



Second Floor
9' CEILING HEIGHT



Third Floor
9' CEILING HEIGHT

Photographs, renderings, and floor plans are for representational purposes only and may not reflect the exact features or dimensions of your home. All dimensions are subject to field variations. Some design features and options shown may not be offered in your community and may vary by elevation selected. All options to be included in your home must be specified in an Exhibit B to the Agreement of Sale. All Toll Brothers floor plans and designs are copyrighted. All rights reserved and strictly enforced. This is not an offering where prohibited by law. Please consult our sales representative for details.