

Nest thermostat technical specifications

Mehdi Aoul

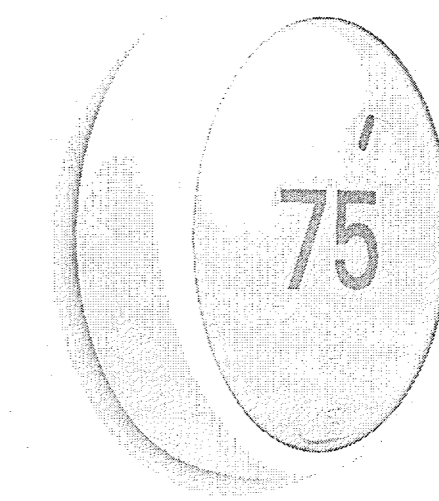
Here you will find specific details about your Nest thermostat including dimensions, weight, maximum elevation, and more.

Applies to: Nest Thermostat E, Nest Store, 3rd gen Nest Learning Thermostat, 2nd gen Nest Learning Thermostat, 1st gen Nest Learning Thermostat.

Technical Specifications

Nest Thermostat E

Color



White

<https://nest.com/support/article/Nest-Learning-Thermostat-technical-specifications>

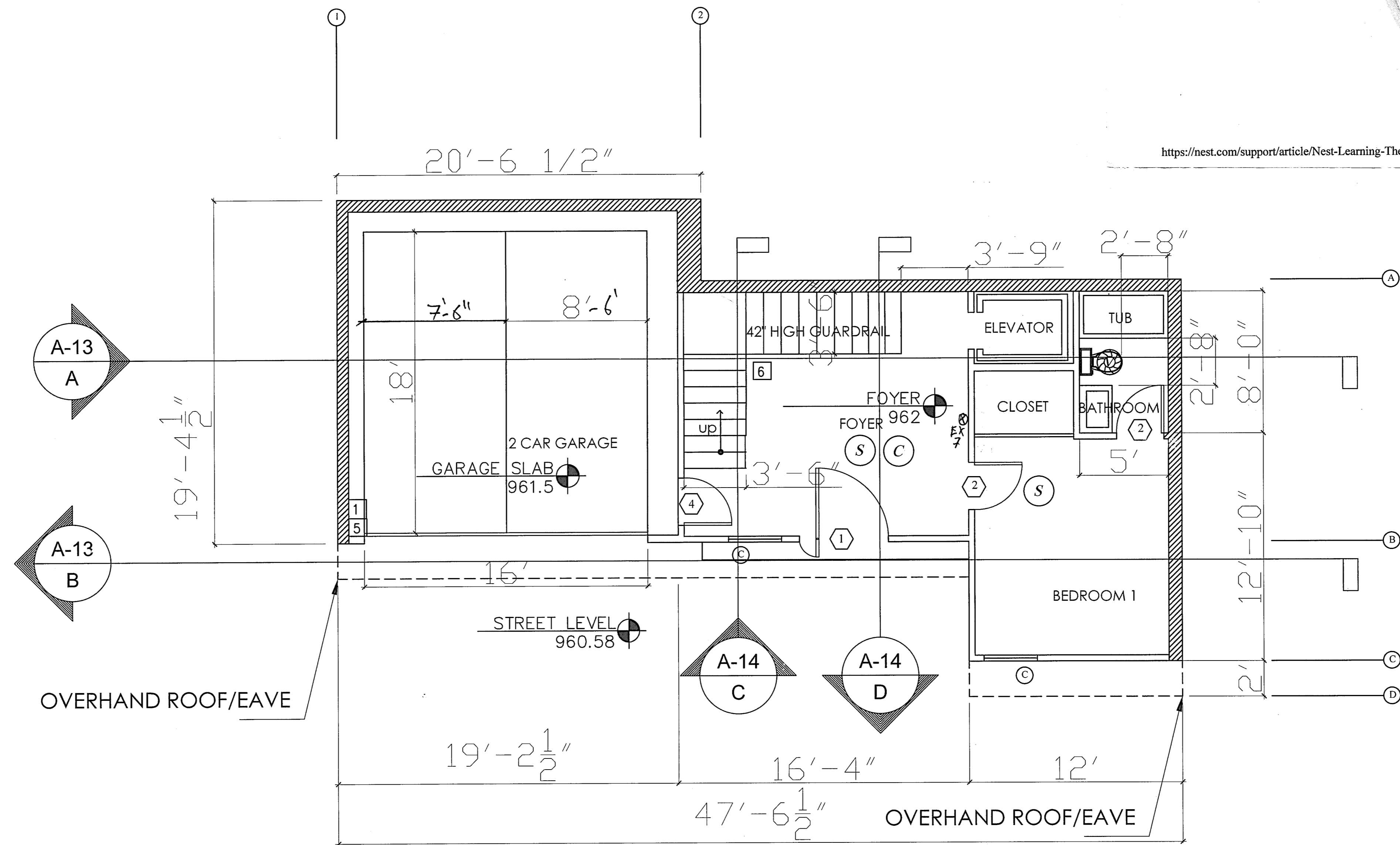
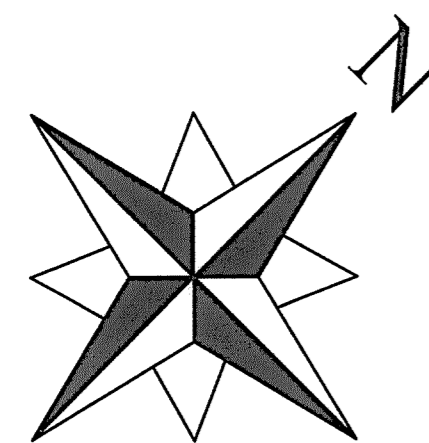
5/9/2018

NOTES

- NEW WALL
- ARCHWAY
- 1 HOUR RATED WALL/TYP X GYPSUM BOARD

- HARD WIRED SMOKE DETECTOR W/ BATTERY BACK-UP
- CARBON MONOXIDE & HARD WIRED SMOKE DETECTOR W/ BATTERY BACK-UP
- MECHANICAL VENT, 7 1/2 AIR CHANGE PER HOUR, DIRECTLY TO THE OUTSIDE "ENERGY STAR" W/ HOMIDISTAT
- GROUND- FAULT CIRCUIT-INTERUPTER
- 4" MIN. METAL DRYER VENT, DIRECTLY TO OUTSIDE MAXIMUM 14' LENGTH W/TWO ELBOWS FROM DRYER
- INDICATES DOOR
- INDICATES WINDOW
- MIN. 1" (inside diameter) LISTED RACEWAY IS INSTALLED FOR EACH UNIT TO ACCOMMODATE A DEDICATED 208/240 VOLT BRANCH CIRCUIT. MIN 40 AMP DEDICATED CIRCUIT
- IRRIGATION CONTROLLER. WEATHER BASE SYSTEM
- BALCONY W/ CROSSFIELD PRODUCTS CORP. DEX-O-TEX COATING (1CBO#2360) OR EQUAL, ICC-ESR-1757 TYPE
- FIREPLACE IS DIRECT-VENT, SEALED COMBUSTION TYPE. 4.503.1 HEAT AND GLO COSMO 42 *UL#1982* REFERENCE GRN-1
- 1-HOUR CONSTRUCTION RATED DRYWALL 5/8" TYPE X
- 42" HIGH GUARDRAIL. SHALL NOT ALLOW PASSAGE OF 4" MAX SPHERE. ESR-3269

THE SERVICE PANEL CIRCUIT DIRECTORY SHALL IDENTIFY THE OVERCURRENT PROTECTIVE DEVICE SPACE RESERVED FOR FUTURE EV CHARGING AS EV CAPABLE. THE RACEWAY TERMINATION LOCATION SHALL BE PERMANENT AND VISIBLY MARKED EV CAPABLE



- RETAINING WALL
- PLANTER WALL
- STRUCTURAL WALL

BASEMENT

PLANS APPROVED
City of Los Angeles
City Planning Department
Date: *3-14-18* By: *J. [Signature]*

Comments: **ZA-2017-1832** This set of plans and specifications has been reviewed and is approved for conformance with state and local ordinances related to the Green Building Code.

DIR -2015-4308

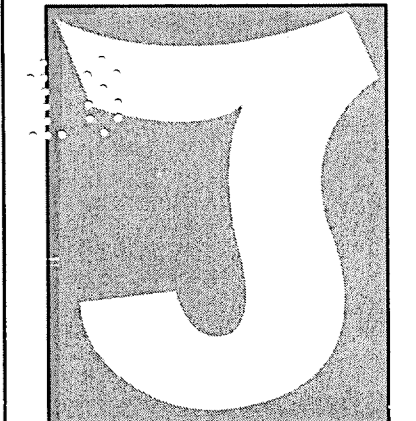
City of Los Angeles
Department of Building and Safety
Green Building Division

This set of plans MUST be at the job site during construction. It is unlawful to alter, change, or deviate from these plans. The stamping of this plan SHALL NOT be construed to be approval of a violation of any provisions of any Ordinance or Law.

By: *R. Z* Total of *3/42* Sheets

READY TO ISSUE
BY KAMRAN GROBI-RAVANDI
JUN 12 2018
Signature

SUBMITTALS/REVISIONS



6745 DARBY AVE.
RESEDA, CA 91335
818.402.4772

WILLOW GLEN
8029 WILLOW GLEN ROAD
LOS ANGELES, CA 90046

| | |
|--------------|----------------|
| PROJ NO: | |
| ACCT MGR: | JA |
| ENG: | |
| DWN BY: | JON AZAL |
| PM: | JA |
| DATE: | 10/20/2016 |
| SCALE: | 1/4"=1' |
| SHEET TITLE: | 1ST FLOOR PLAN |
| SHEET NO: | A-7 |