

WALL LEGEND

-  EXISTING WALL TO REMAIN
-  EXISTING WALL TO BE REMOVED DOWN LEVEL



ksa
 KYLE STEPHENS & ASSOCIATES, INC.
 1100 Columbia Street, Suite 702
 San Diego, CA 92101
 Tel: (619) 235-2742
 Fax: (619) 235-2743
 Email: kyle@ksa.com



CONSULTANT:

CLIENT:

ALI EL MOUETA

215 WILLIE JAMES JONES AVE
 SAN DIEGO, CALIFORNIA 92102

PROJECT:

WILLIE JAMES JONES
 LOW INCOME DEVELOPMENT

215 WILLIE JAMES JONES AVE
 SAN DIEGO, CALIFORNIA 92102

REVISION

DATE

REVISION	ITEM	DATE
△		
△		
△		
△		

THIS SET

ISSUE DATE

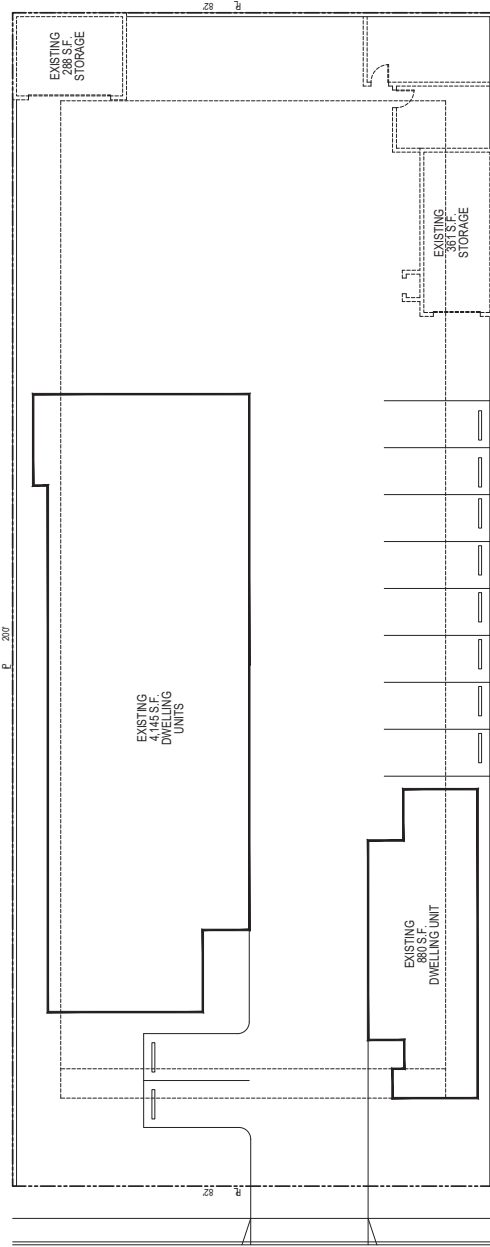
- SCHEMATIC
- DESIGN DEV.
- PLAN CHECK 1 10-21-21
- BIDDING
- PLAN CHECK 2
- CONSTRUCTION

SHEET TITLE / CONTENTS

DEMOLITION PLAN

PROJECT #:
 FILE #:
 SCALE: AS NOTED
 DRAWN BY: RR
 DATE DRAWN:
 CHECKED BY: KOS
 SHEET: OF:

A10



WILLIE JAMES JONES



SCALE
 3/8" = 1'-0"

DEMOLITION PLAN



CONSULTANT:

CLIENT:
 ALI EL MOUTEA

215 WILLIE JAMES JONES AVE
 SAN DIEGO, CALIFORNIA 92102

WILLIE JAMES JONES
 LOW INCOME DEVELOPMENT

215 WILLIE JAMES JONES AVE
 SAN DIEGO, CALIFORNIA 92102

REVISION	ITEM	DATE
△		
△		
△		

THIS SET	ISSUE DATE
<input type="checkbox"/> SCHEMATIC	
<input type="checkbox"/> DESIGN DEV.	
<input checked="" type="checkbox"/> PLAN CHECK 1	10-21-21
<input type="checkbox"/> BIDDING	
<input type="checkbox"/> PLAN CHECK 2	
<input type="checkbox"/> CONSTRUCTION	

SHEET TITLE / CONTENTS

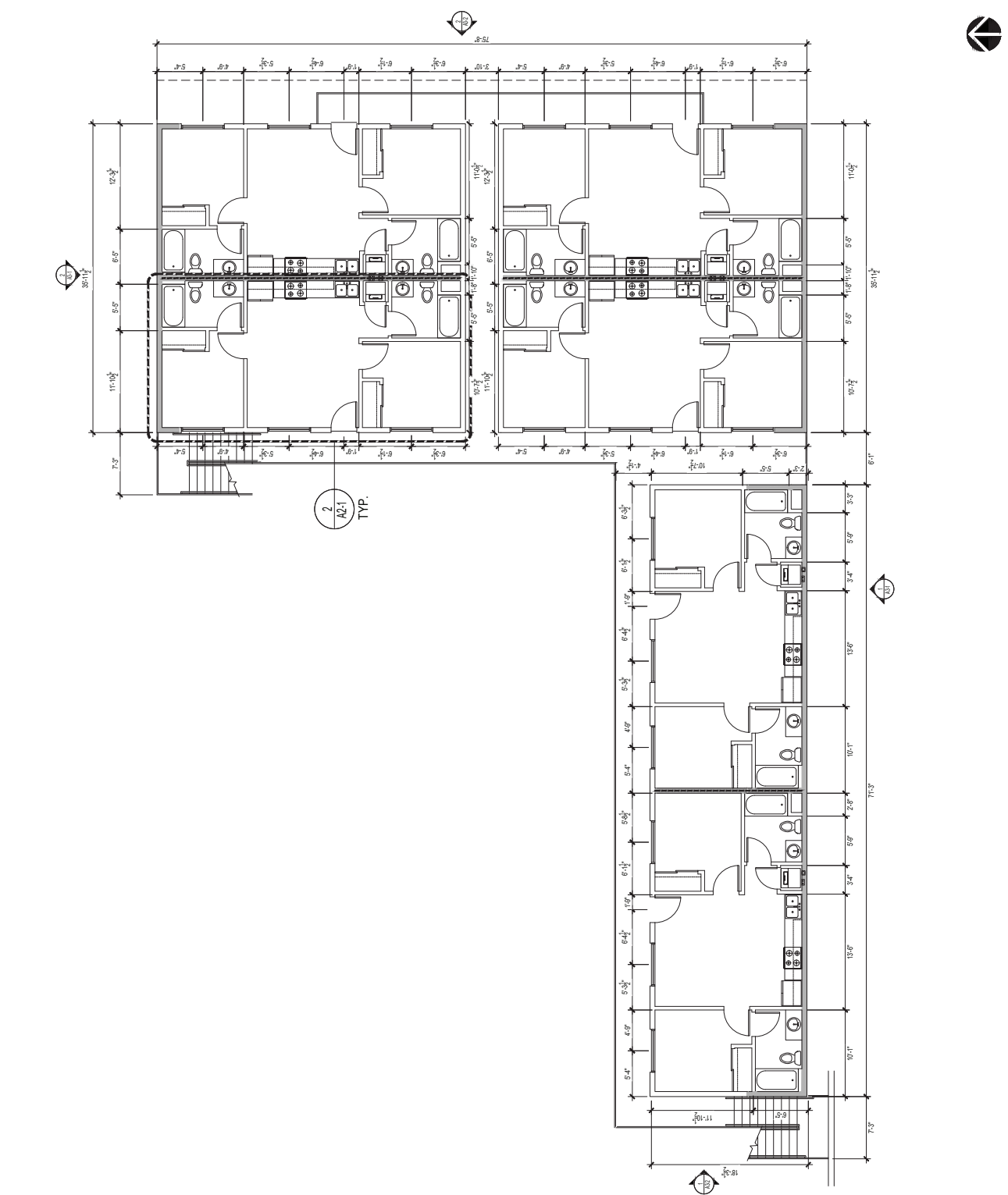
SECOND FLOOR PLAN

PROJECT #:
 FILE #:
 SCALE BY:
 DATE DRAWN:
 CHECKED BY:
 OF:
 A12

- ### WALL LEGEND
- 1. UNREINFORCED WALL
 - 2. REINFORCED WALL
 - 3. CONCRETE WALL
 - 4. CONCRETE WALL WITH INSULATION
 - 5. CONCRETE WALL WITH INSULATION AND FINISH
 - 6. CONCRETE WALL WITH INSULATION AND FINISH AND EXTERIOR FINISH
 - 7. CONCRETE WALL WITH INSULATION AND FINISH AND EXTERIOR FINISH AND INTERIOR FINISH
 - 8. CONCRETE WALL WITH INSULATION AND FINISH AND EXTERIOR FINISH AND INTERIOR FINISH AND INTERIOR FINISH

- ### FLOOR NOTES
- CONTRACTOR SHALL VERIFY ALL ROUGH OPENING REQUIREMENTS PRIOR TO BRANING.
 - FIRE PROTECTION, INCLUDING FIRE APPROVED ACCESS DOORS AND WATER SUPPLIES SHALL BE INSTALLED PRIOR TO THE START OF INTERIOR FINISHES PRIOR TO AND DURING THE COURSE OF CONSTRUCTION. (CFC 0101, 0102, 0103)
 - BUILDINGS UNDERGOING CONSTRUCTION ALTERATION OR DEMOLITION SHALL BE IN ACCORDANCE WITH CFC ARTICLE 17 (CFC 0101)
 - DECORATIVE MATERIALS SHALL BE MAINTAINED IN A FIRE RESISTANT CONDITION CODE PER CFC 11, 11.03, 137, CFC 201.1
 - AT LEAST ONE BARRIER WITH AN MINIMUM RATING OF 3-HR SHALL BE MAINTAINED THROUGHOUT CONSTRUCTION. (CFC 0101, CFC 201.1, CFC 201.2)
 - ALL WALL AND CEILING FINISHES TO COMPLY WITH CFC CHAPTER 1, TABLE 8B
 - ALL INTERIOR WALLS TO REMAIN UNFINISHED UNLESS OTHERWISE NOTED.
 - CONCRETE WALLS SHALL BE FINISHED PER CFC 11, 11.03, 137, CFC 201.1, 201.2, 201.3 AND CALIFORNIA CODE OF REGULATIONS (CCR) TITLE 19
 - DURING CONSTRUCTION AT LEAST ONE ESTIMATOR SHALL BE PROVIDED ON EACH LEVEL AT EACH BRANING AND CONSTRUCTION PHASE. IN LOCATIONS OTHER THAN STAIRS ARE PRESENT PER CFC SECTION 134.1
 - BUILDINGS UNDERGOING CONSTRUCTION, ALTERATION, OR DEMOLITION SHALL COMPLY WITH CFC CHAPTER 13, WEEDING, CUTTING OR OTHER HOT WORKS SHALL BE IN ACCORDANCE WITH CFC 13.01, 13.02, 13.03, 13.04, 13.05, 13.06, 13.07, 13.08, 13.09, 13.10, 13.11, 13.12, 13.13, 13.14, 13.15, 13.16, 13.17, 13.18, 13.19, 13.20, 13.21, 13.22, 13.23, 13.24, 13.25, 13.26, 13.27, 13.28, 13.29, 13.30, 13.31, 13.32, 13.33, 13.34, 13.35, 13.36, 13.37, 13.38, 13.39, 13.40, 13.41, 13.42, 13.43, 13.44, 13.45, 13.46, 13.47, 13.48, 13.49, 13.50, 13.51, 13.52, 13.53, 13.54, 13.55, 13.56, 13.57, 13.58, 13.59, 13.60, 13.61, 13.62, 13.63, 13.64, 13.65, 13.66, 13.67, 13.68, 13.69, 13.70, 13.71, 13.72, 13.73, 13.74, 13.75, 13.76, 13.77, 13.78, 13.79, 13.80, 13.81, 13.82, 13.83, 13.84, 13.85, 13.86, 13.87, 13.88, 13.89, 13.90, 13.91, 13.92, 13.93, 13.94, 13.95, 13.96, 13.97, 13.98, 13.99, 14.00
 - CONTRACTOR SHALL VERIFY ALL ROUGH OPENING REQUIREMENTS PRIOR TO BRANING.
 - FIRE PROTECTION, INCLUDING FIRE APPROVED ACCESS DOORS AND WATER SUPPLIES SHALL BE INSTALLED PRIOR TO THE START OF INTERIOR FINISHES PRIOR TO AND DURING THE COURSE OF CONSTRUCTION. (CFC 0101, 0102, 0103)
 - BUILDINGS UNDERGOING CONSTRUCTION ALTERATION OR DEMOLITION SHALL BE IN ACCORDANCE WITH CFC ARTICLE 17 (CFC 0101)
 - DECORATIVE MATERIALS SHALL BE MAINTAINED IN A FIRE RESISTANT CONDITION CODE PER CFC 11, 11.03, 137, CFC 201.1
 - AT LEAST ONE BARRIER WITH AN MINIMUM RATING OF 3-HR SHALL BE MAINTAINED THROUGHOUT CONSTRUCTION. (CFC 0101, CFC 201.1, CFC 201.2)
 - ALL WALL AND CEILING FINISHES TO COMPLY WITH CFC CHAPTER 1, TABLE 8B
 - ALL INTERIOR WALLS TO REMAIN UNFINISHED UNLESS OTHERWISE NOTED.
 - CONCRETE WALLS SHALL BE FINISHED PER CFC 11, 11.03, 137, CFC 201.1, 201.2, 201.3 AND CALIFORNIA CODE OF REGULATIONS (CCR) TITLE 19
 - DURING CONSTRUCTION AT LEAST ONE ESTIMATOR SHALL BE PROVIDED ON EACH LEVEL AT EACH BRANING AND CONSTRUCTION PHASE. IN LOCATIONS OTHER THAN STAIRS ARE PRESENT PER CFC SECTION 134.1
 - BUILDINGS UNDERGOING CONSTRUCTION, ALTERATION, OR DEMOLITION SHALL COMPLY WITH CFC CHAPTER 13, WEEDING, CUTTING OR OTHER HOT WORKS SHALL BE IN ACCORDANCE WITH CFC 13.01, 13.02, 13.03, 13.04, 13.05, 13.06, 13.07, 13.08, 13.09, 13.10, 13.11, 13.12, 13.13, 13.14, 13.15, 13.16, 13.17, 13.18, 13.19, 13.20, 13.21, 13.22, 13.23, 13.24, 13.25, 13.26, 13.27, 13.28, 13.29, 13.30, 13.31, 13.32, 13.33, 13.34, 13.35, 13.36, 13.37, 13.38, 13.39, 13.40, 13.41, 13.42, 13.43, 13.44, 13.45, 13.46, 13.47, 13.48, 13.49, 13.50, 13.51, 13.52, 13.53, 13.54, 13.55, 13.56, 13.57, 13.58, 13.59, 13.60, 13.61, 13.62, 13.63, 13.64, 13.65, 13.66, 13.67, 13.68, 13.69, 13.70, 13.71, 13.72, 13.73, 13.74, 13.75, 13.76, 13.77, 13.78, 13.79, 13.80, 13.81, 13.82, 13.83, 13.84, 13.85, 13.86, 13.87, 13.88, 13.89, 13.90, 13.91, 13.92, 13.93, 13.94, 13.95, 13.96, 13.97, 13.98, 13.99, 14.00
 - CONTRACTOR SHALL VERIFY ALL ROUGH OPENING REQUIREMENTS PRIOR TO BRANING.
 - FIRE PROTECTION, INCLUDING FIRE APPROVED ACCESS DOORS AND WATER SUPPLIES SHALL BE INSTALLED PRIOR TO THE START OF INTERIOR FINISHES PRIOR TO AND DURING THE COURSE OF CONSTRUCTION. (CFC 0101, 0102, 0103)
 - BUILDINGS UNDERGOING CONSTRUCTION ALTERATION OR DEMOLITION SHALL BE IN ACCORDANCE WITH CFC ARTICLE 17 (CFC 0101)
 - DECORATIVE MATERIALS SHALL BE MAINTAINED IN A FIRE RESISTANT CONDITION CODE PER CFC 11, 11.03, 137, CFC 201.1
 - AT LEAST ONE BARRIER WITH AN MINIMUM RATING OF 3-HR SHALL BE MAINTAINED THROUGHOUT CONSTRUCTION. (CFC 0101, CFC 201.1, CFC 201.2)
 - ALL WALL AND CEILING FINISHES TO COMPLY WITH CFC CHAPTER 1, TABLE 8B
 - ALL INTERIOR WALLS TO REMAIN UNFINISHED UNLESS OTHERWISE NOTED.
 - CONCRETE WALLS SHALL BE FINISHED PER CFC 11, 11.03, 137, CFC 201.1, 201.2, 201.3 AND CALIFORNIA CODE OF REGULATIONS (CCR) TITLE 19
 - DURING CONSTRUCTION AT LEAST ONE ESTIMATOR SHALL BE PROVIDED ON EACH LEVEL AT EACH BRANING AND CONSTRUCTION PHASE. IN LOCATIONS OTHER THAN STAIRS ARE PRESENT PER CFC SECTION 134.1
 - BUILDINGS UNDERGOING CONSTRUCTION, ALTERATION, OR DEMOLITION SHALL COMPLY WITH CFC CHAPTER 13, WEEDING, CUTTING OR OTHER HOT WORKS SHALL BE IN ACCORDANCE WITH CFC 13.01, 13.02, 13.03, 13.04, 13.05, 13.06, 13.07, 13.08, 13.09, 13.10, 13.11, 13.12, 13.13, 13.14, 13.15, 13.16, 13.17, 13.18, 13.19, 13.20, 13.21, 13.22, 13.23, 13.24, 13.25, 13.26, 13.27, 13.28, 13.29, 13.30, 13.31, 13.32, 13.33, 13.34, 13.35, 13.36, 13.37, 13.38, 13.39, 13.40, 13.41, 13.42, 13.43, 13.44, 13.45, 13.46, 13.47, 13.48, 13.49, 13.50, 13.51, 13.52, 13.53, 13.54, 13.55, 13.56, 13.57, 13.58, 13.59, 13.60, 13.61, 13.62, 13.63, 13.64, 13.65, 13.66, 13.67, 13.68, 13.69, 13.70, 13.71, 13.72, 13.73, 13.74, 13.75, 13.76, 13.77, 13.78, 13.79, 13.80, 13.81, 13.82, 13.83, 13.84, 13.85, 13.86, 13.87, 13.88, 13.89, 13.90, 13.91, 13.92, 13.93, 13.94, 13.95, 13.96, 13.97, 13.98, 13.99, 14.00
 - CONTRACTOR SHALL VERIFY ALL ROUGH OPENING REQUIREMENTS PRIOR TO BRANING.
 - FIRE PROTECTION, INCLUDING FIRE APPROVED ACCESS DOORS AND WATER SUPPLIES SHALL BE INSTALLED PRIOR TO THE START OF INTERIOR FINISHES PRIOR TO AND DURING THE COURSE OF CONSTRUCTION. (CFC 0101, 0102, 0103)
 - BUILDINGS UNDERGOING CONSTRUCTION ALTERATION OR DEMOLITION SHALL BE IN ACCORDANCE WITH CFC ARTICLE 17 (CFC 0101)
 - DECORATIVE MATERIALS SHALL BE MAINTAINED IN A FIRE RESISTANT CONDITION CODE PER CFC 11, 11.03, 137, CFC 201.1
 - AT LEAST ONE BARRIER WITH AN MINIMUM RATING OF 3-HR SHALL BE MAINTAINED THROUGHOUT CONSTRUCTION. (CFC 0101, CFC 201.1, CFC 201.2)
 - ALL WALL AND CEILING FINISHES TO COMPLY WITH CFC CHAPTER 1, TABLE 8B
 - ALL INTERIOR WALLS TO REMAIN UNFINISHED UNLESS OTHERWISE NOTED.
 - CONCRETE WALLS SHALL BE FINISHED PER CFC 11, 11.03, 137, CFC 201.1, 201.2, 201.3 AND CALIFORNIA CODE OF REGULATIONS (CCR) TITLE 19
 - DURING CONSTRUCTION AT LEAST ONE ESTIMATOR SHALL BE PROVIDED ON EACH LEVEL AT EACH BRANING AND CONSTRUCTION PHASE. IN LOCATIONS OTHER THAN STAIRS ARE PRESENT PER CFC SECTION 134.1
 - BUILDINGS UNDERGOING CONSTRUCTION, ALTERATION, OR DEMOLITION SHALL COMPLY WITH CFC CHAPTER 13, WEEDING, CUTTING OR OTHER HOT WORKS SHALL BE IN ACCORDANCE WITH CFC 13.01, 13.02, 13.03, 13.04, 13.05, 13.06, 13.07, 13.08, 13.09, 13.10, 13.11, 13.12, 13.13, 13.14, 13.15, 13.16, 13.17, 13.18, 13.19, 13.20, 13.21, 13.22, 13.23, 13.24, 13.25, 13.26, 13.27, 13.28, 13.29, 13.30, 13.31, 13.32, 13.33, 13.34, 13.35, 13.36, 13.37, 13.38, 13.39, 13.40, 13.41, 13.42, 13.43, 13.44, 13.45, 13.46, 13.47, 13.48, 13.49, 13.50, 13.51, 13.52, 13.53, 13.54, 13.55, 13.56, 13.57, 13.58, 13.59, 13.60, 13.61, 13.62, 13.63, 13.64, 13.65, 13.66, 13.67, 13.68, 13.69, 13.70, 13.71, 13.72, 13.73, 13.74, 13.75, 13.76, 13.77, 13.78, 13.79, 13.80, 13.81, 13.82, 13.83, 13.84, 13.85, 13.86, 13.87, 13.88, 13.89, 13.90, 13.91, 13.92, 13.93, 13.94, 13.95, 13.96, 13.97, 13.98, 13.99, 14.00
 - CONTRACTOR SHALL VERIFY ALL ROUGH OPENING REQUIREMENTS PRIOR TO BRANING.
 - FIRE PROTECTION, INCLUDING FIRE APPROVED ACCESS DOORS AND WATER SUPPLIES SHALL BE INSTALLED PRIOR TO THE START OF INTERIOR FINISHES PRIOR TO AND DURING THE COURSE OF CONSTRUCTION. (CFC 0101, 0102, 0103)
 - BUILDINGS UNDERGOING CONSTRUCTION ALTERATION OR DEMOLITION SHALL BE IN ACCORDANCE WITH CFC ARTICLE 17 (CFC 0101)
 - DECORATIVE MATERIALS SHALL BE MAINTAINED IN A FIRE RESISTANT CONDITION CODE PER CFC 11, 11.03, 137, CFC 201.1
 - AT LEAST ONE BARRIER WITH AN MINIMUM RATING OF 3-HR SHALL BE MAINTAINED THROUGHOUT CONSTRUCTION. (CFC 0101, CFC 201.1, CFC 201.2)
 - ALL WALL AND CEILING FINISHES TO COMPLY WITH CFC CHAPTER 1, TABLE 8B
 - ALL INTERIOR WALLS TO REMAIN UNFINISHED UNLESS OTHERWISE NOTED.
 - CONCRETE WALLS SHALL BE FINISHED PER CFC 11, 11.03, 137, CFC 201.1, 201.2, 201.3 AND CALIFORNIA CODE OF REGULATIONS (CCR) TITLE 19
 - DURING CONSTRUCTION AT LEAST ONE ESTIMATOR SHALL BE PROVIDED ON EACH LEVEL AT EACH BRANING AND CONSTRUCTION PHASE. IN LOCATIONS OTHER THAN STAIRS ARE PRESENT PER CFC SECTION 134.1
 - BUILDINGS UNDERGOING CONSTRUCTION, ALTERATION, OR DEMOLITION SHALL COMPLY WITH CFC CHAPTER 13, WEEDING, CUTTING OR OTHER HOT WORKS SHALL BE IN ACCORDANCE WITH CFC 13.01, 13.02, 13.03, 13.04, 13.05, 13.06, 13.07, 13.08, 13.09, 13.10, 13.11, 13.12, 13.13, 13.14, 13.15, 13.16, 13.17, 13.18, 13.19, 13.20, 13.21, 13.22, 13.23, 13.24, 13.25, 13.26, 13.27, 13.28, 13.29, 13.30, 13.31, 13.32, 13.33, 13.34, 13.35, 13.36, 13.37, 13.38, 13.39, 13.40, 13.41, 13.42, 13.43, 13.44, 13.45, 13.46, 13.47, 13.48, 13.49, 13.50, 13.51, 13.52, 13.53, 13.54, 13.55, 13.56, 13.57, 13.58, 13.59, 13.60, 13.61, 13.62, 13.63, 13.64, 13.65, 13.66, 13.67, 13.68, 13.69, 13.70, 13.71, 13.72, 13.73, 13.74, 13.75, 13.76, 13.77, 13.78, 13.79, 13.80, 13.81, 13.82, 13.83, 13.84, 13.85, 13.86, 13.87, 13.88, 13.89, 13.90, 13.91, 13.92, 13.93, 13.94, 13.95, 13.96, 13.97, 13.98, 13.99, 14.00

- ### EGRESS LEGEND
- X — NET OFFENSABLE AREA (SF)
 - X — NET OFFENSABLE WIDTH (IN)
 - X — NET OFFENSABLE HEIGHT (IN)
 - X — SILL HEIGHT (IN)



SCALE: 3/16" = 1'-0"
 SECOND FLOOR PLAN

