

MARRAKESH MEMBERSHIPS

FULL MEMBERSHIP

Required with the purchase of a Marrakesh home.

Monthly Dues & Fees

<i>Membership Affiliation One Time Fee</i>	<i>\$40,000</i>
Homeowners Fee	\$945.00
MCC Reserve Fund	\$50.00
MCA Reserve Fund	\$145.00
Clubhouse Renovation Assessment: Through March 2036	\$195.15
Additional Renovation Assessment: Through September 2037	\$45.60
Social Monthly Dues	\$720.00
Annual Golf Dues \$2,700.00	<hr/>
<i>Homeowners Insurance: Included</i>	<i>Total \$2,100.75</i>
<i>Annual Cart Trail Fee \$600 2nd Cart \$400</i>	

Land Encumbrance to Marrakesh Leasehold Partnership:

Paid separately from Marrakesh dues. 100% is paid to MLP and 40% is credited back on monthly statement. Estimated charge \$260 - \$335.

NON-RESIDENT FULL MEMBERSHIP

Available to those who do not own a residence at Marrakesh.

Monthly Dues & Fees

<i>Membership Affiliation One Time Fee</i>	<i>\$40,000</i>
Capital Contribution Monthly Fee Dues \$11,340.00 Billed Annually	
<i>Additional Annual Cart Trail Fee \$600 2nd Cart \$400</i>	

SEASONAL GOLF MEMBERSHIP

Available to those leasing from a Golf/Full Residence at Marrakesh.

Monthly Dues \$1,800.00

Includes \$600 Golf Cart Trail Fee

	<i>9-Holes</i>	<i>18-Holes</i>
Accompanied Guest	\$55.00	\$75.00

SEASONAL SOCIAL MEMBERSHIP

Available to those leasing from a Social/Golf/Full Residence at Marrakesh.

Monthly Dues \$500.00

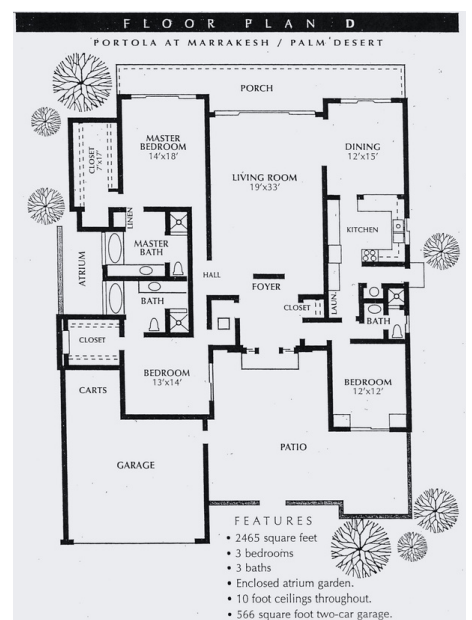
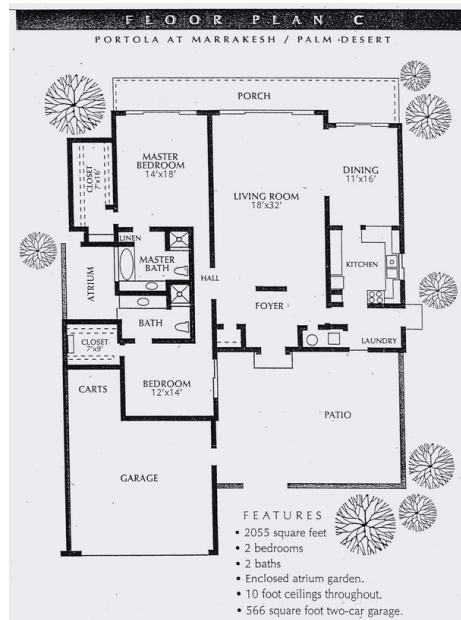
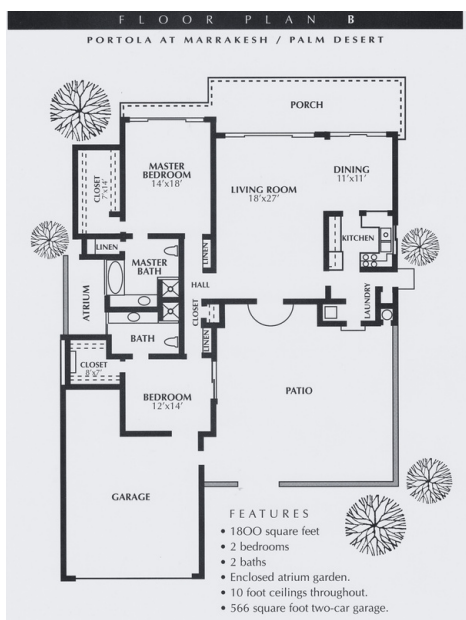
GREEN FEES

Guest privileges are extended to the guests of Full Members.

	9-Holes	18-Holes
Immediate Family Guest	\$35.00	\$55.00
Accompanied Guest	\$55.00	\$75.00
Unaccompanied / Reciprocal	\$75.00	\$95.00

OPTIONAL ANNUAL GOLF PROGRAM DUES

Men's Golf Club	\$75.00
Ladies Golf Club	\$125.00
Ladies Putter Club	\$90.00



47000 MARRAKESH DRIVE | PALM DESERT, CA 92260
MARRAKESHOUNTRYCLUB.COM

