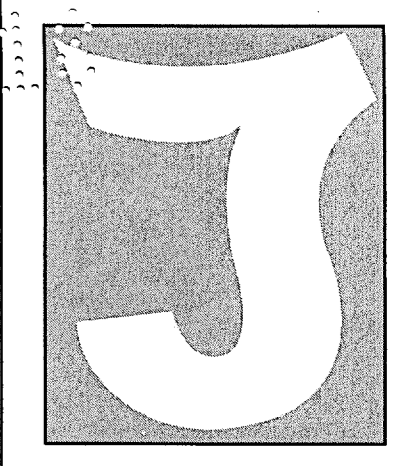


LABS
 0 0 1 0
 APPROVED

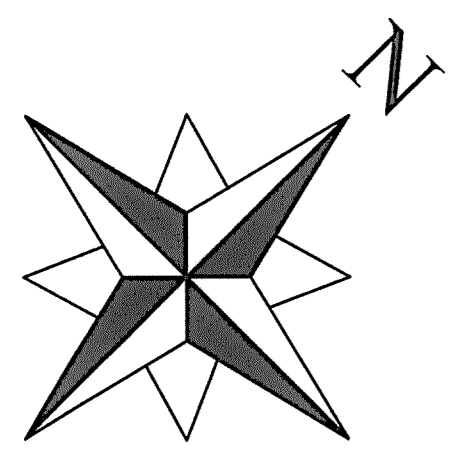


6745 DARBY AVE.
 RESEDA, CA 91335
 818.402.4772

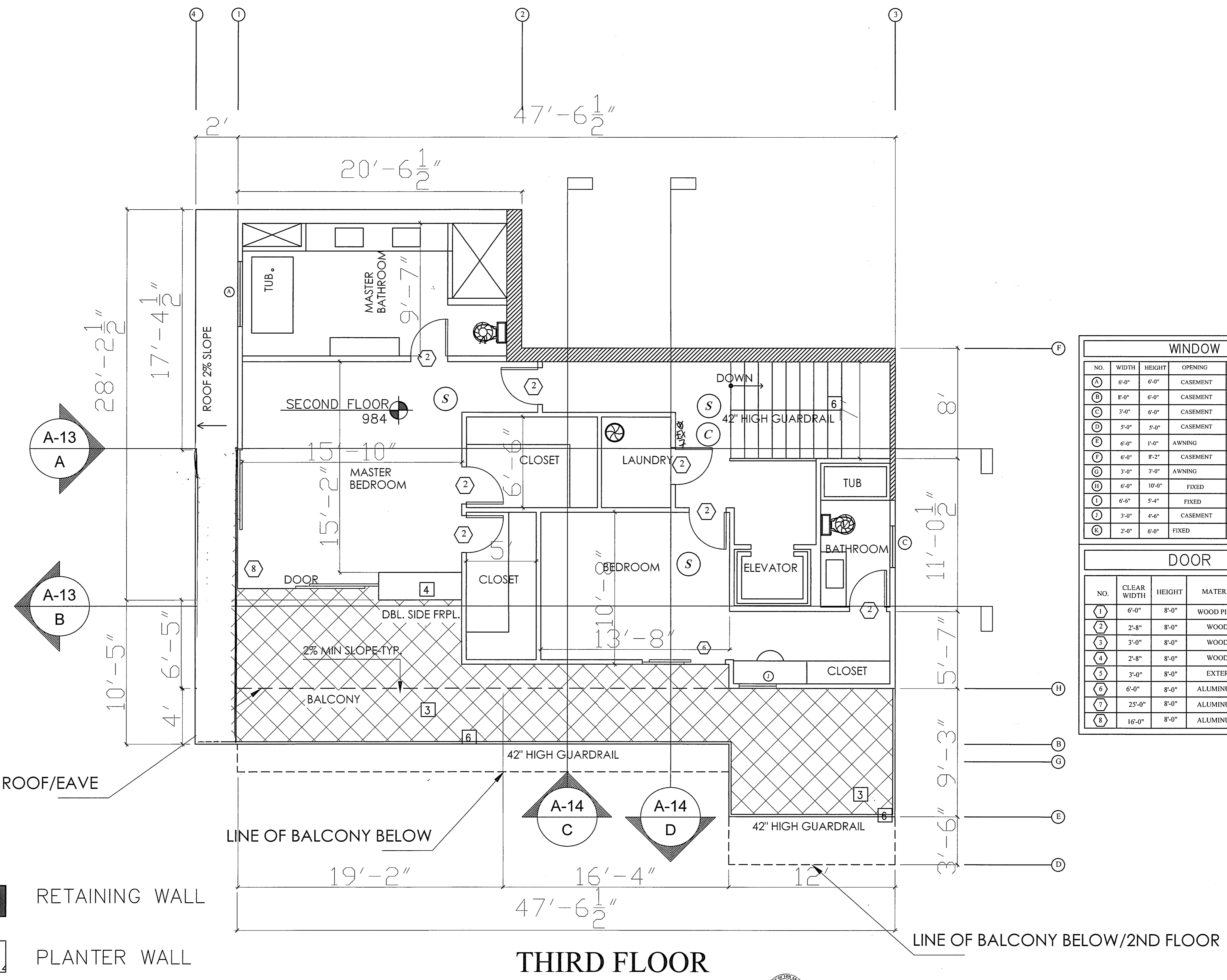
NOTES

- NEW WALL
- ARCHWAY
- 1 HOUR RATED WALL/TYPE X GYPSUM BOARD
- HARD WIRED SMOKE DETECTOR W/ BATTERY BACK-UP
- CARBON MONOXIDE & HARD WIRED SMOKE DETECTOR W/ BATTERY BACK-UP
- MECHANICAL VENT, 7 1/2 AIR CHANGE PER HOUR, DIRECTLY TO THE OUTSIDE "ENERGY STAR" W/ HOMIDISTAT
- GROUND- FAULT CIRCUIT-INTERUPTER
- 4" MIN. METAL DRYER VENT, DIRECTLY TO OUTSIDE MAXIMUM 14' LENGTH W/TWO ELBOWS FROM DRYER
- INDICATES DOOR
- INDICATES WINDOW
- MIN. 1" (inside diameter) LISTED RACEWAY IS INSTALLED FOR EACH UNIT TO ACCOMMODATE A DEDICATED 208/240 VOLT BRANCH CIRCUIT. MIN 40 AMP DEDICATED CIRCUIT
- IRRIGATION CONTROLLER. WEATHER BASE SYSTEM
- BALCONY W/ CROSSFIELD PRODUCTS CORP. DEX-O-TEX COATING (1CB0#2360) OR EQUAL, ICC-ESR-1757 TYPE
- FIREPLACE IS DIRECT-VENT, SEALED COMBUSTION TYPE. 4.503.1 HEAT AND GLO COSMO 42 REFERENCE GRN-1
- 1-HOUR CONSTRUCTION RATED DRYWALL 5/8" TYPE X
- 42" HIGH GUARDRAIL. SHALL NOT ALLOW PASSAGE OF 4" MAX SPHERE. ESR-3269 ESR 3269 LARR 25784

THE SERVICE PANEL CIRCUIT DIRECTORY SHALL IDENTIFY THE OVERCURRENT PROTECTIVE DEVICE SPACE RESERVED FOR FUTURE EV CHARGING AS EV CAPABLE. THE RACEWAY TERMINATION LOCATION SHALL BE PERMANENT AND VISIBLY MARKED EV CAPABLE



- RETAINING WALL
- PLANTER WALL
- STRUCTURAL WALL



| WINDOW SCHEDULE | | | | | | |
|-----------------|-------|--------|----------|-------|-------------|---------------|
| NO. | WIDTH | HEIGHT | OPENING | TYPE | FRAME COLOR | REMARKS |
| A | 6'-0" | 6'-0" | CASEMENT | ALMN. | WHITE | LOW-E |
| B | 8'-0" | 6'-0" | CASEMENT | ALMN. | WHITE | LOW-E |
| C | 3'-0" | 6'-0" | CASEMENT | ALMN. | WHITE | LOW-E |
| D | 5'-0" | 5'-0" | CASEMENT | ALMN. | WHITE | LOW-E |
| E | 6'-0" | 1'-0" | AWNING | ALMN. | WHITE | LOW-E |
| F | 6'-0" | 8'-2" | CASEMENT | ALMN. | WHITE | LOW-E |
| G | 3'-0" | 3'-0" | AWNING | ALMN. | WHITE | LOW-E |
| H | 6'-0" | 10'-0" | FIXED | ALMN. | WHITE | LOW-E |
| I | 6'-6" | 5'-4" | FIXED | ALMN. | WHITE | LOW-E |
| J | 3'-0" | 4'-6" | CASEMENT | ALMN. | WHITE | LOW-E |
| K | 2'-0" | 6'-0" | FIXED | ALMN. | WHITE | LOW-E/OBSCURE |

| DOOR SCHEDULE | | | | |
|---------------|-------------|--------|------------|---|
| NO. | CLEAR WIDTH | HEIGHT | MATERIAL | REMARKS |
| 1 | 6'-0" | 8'-0" | WOOD PIVOT | ENTRANCE DOOR |
| 2 | 2'-8" | 8'-0" | WOOD | INTERIOR DOOR |
| 3 | 3'-0" | 8'-0" | WOOD | INTERIOR DOOR |
| 4 | 2'-8" | 8'-0" | WOOD | GARAGE-20 MINUTES FIRE RATED SELF-CLOSING |
| 5 | 3'-0" | 8'-0" | EXTERIOR | EXTERIOR DOOR |
| 6 | 6'-0" | 8'-0" | ALUMINUM | EXTERIOR DOUBLE DOORS |
| 7 | 25'-0" | 8'-0" | ALUMINUM | FAMILY ROOM-BIFOLD DOOR |
| 8 | 16'-0" | 8'-0" | ALUMINUM | MASTER BEDROOM-BIFOLD DOOR |

PLANS APPROVED
 City of Los Angeles
 City Planning Department
 Date: 3-14-18 By: [Signature]
 Comments: DIR-2015-4308
 ZA-2017-1832

READY TO ISSUE
 BY KAMRAN GHORBALANDI
 JUN 12 2018

SUBMITTALS/REVISIONS

WILLOW GLEN

8029 WILLOW GLEN ROAD
 LOS ANGELES, CA 90046

| | |
|--------------|----------------|
| PROJ NO: | |
| ACCT MGR: | JA |
| ENG: | |
| DWN BY: | JOHN AZAL |
| PM: | JA |
| DATE: | 10/20/2016 |
| SCALE: | 1/4"=1' |
| SHEET TITLE: | 3RD FLOOR PLAN |
| SHEET NO: | A-9 |