

**Estimated Total Finished
Square Footage: 3,800 SQ FT**

Above-Grade: 3,800 SQ FT Below-Grade: N/A
Plus 570 SQ FT 3-Car Garage on Main Level
Calculated per ANSI Standard Z765-2021.

2209 MEMORY LANE

WESTLAKE VILLAGE, CA 91361

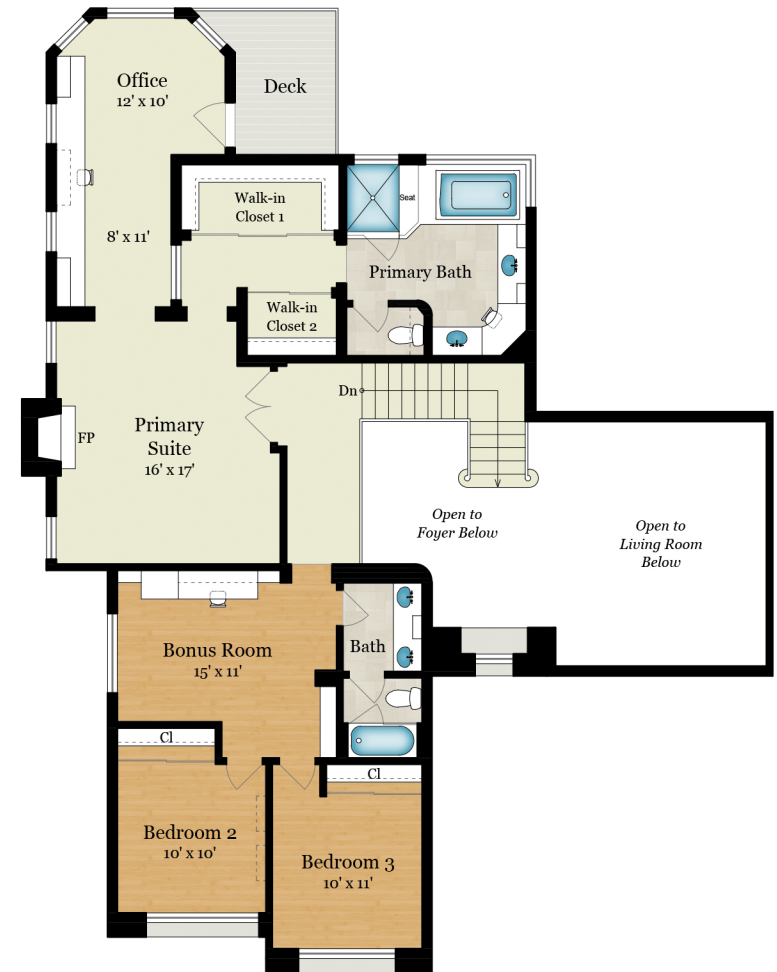


* Estimated Total Finished & Unfinished Square Footage: 4,370 SQ FT



MAIN LEVEL

2,220 SQ FT



UPPER LEVEL

1,580 SQ FT

